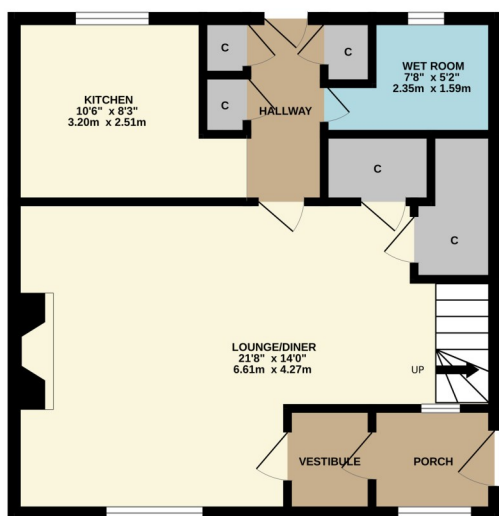




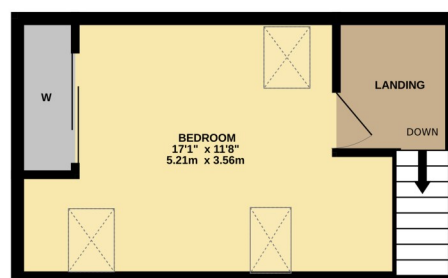
6 Crannog Road, Milton, G82 2TF

This surprisingly spacious one-bedroom end-terrace bungalow sits in a good size corner plot within the village of Milton, to the East of Dumbarton.

GROUND FLOOR  
475 sq.ft. (44.1 sq.m.) approx.



1ST FLOOR  
229 sq.ft. (21.3 sq.m.) approx.



ONE BEDROOM END TERRACE

TOTAL FLOOR AREA: 704 sq.ft. (65.4 sq.m.) approx.

Whilst every attempt has been made to ensure the accuracy of the floorplan contained here, measurements of doors, windows, rooms and any other items are approximate and no responsibility is taken for any error, omission or mis-statement. This plan is for illustrative purposes only and should be used as such by any prospective purchaser. The services, systems and appliances shown have not been tested and no guarantee as to their operability or efficiency can be given.

Made with Metropix ©2025





David Muir Estate Agents  
2 Church Street, Dumbarton,  
G82 1QL



Tel 01389 734366  
Fax 01389 742476



tracy@davidmuirestates.co.uk



davidmuirestates.com



davidmuirestates

#### Travel Directions

From the Dumbuck Lights travelling east towards Glasgow follow the dual carriageway and take the 1st on your left into Colquhoun Road. Turn second left and left again into Crannog Rd. No 6 is on your right at the corner facing the river.

#### Additional Information

Home Report Valuation: £95,000  
Asking Price: Offers Over £92,000  
Council Tax Band: A  
Energy Efficiency Rating: D  
Double Glazing  
Gas Central Heating

#### Home Report

This property benefits from a Home Report which can be obtained from [davidmuirestates.com](http://davidmuirestates.com) or [onesurvey.org](http://onesurvey.org)

#### Disclaimer

These property details are set out as a general outline only and do not constitute any part of an Offer or Contract. All fixtures and fittings mentioned in these particulars are included in the sale. All others in the property are specifically excluded. Photographs are reproduced for general information and it must not be inferred that any item is included for sale with the property. All measurements, distances and areas are approximate and for guidance only.