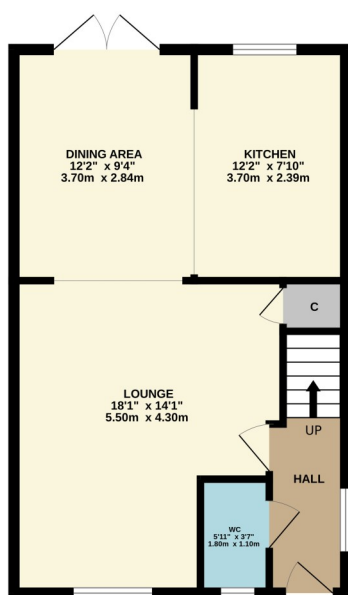


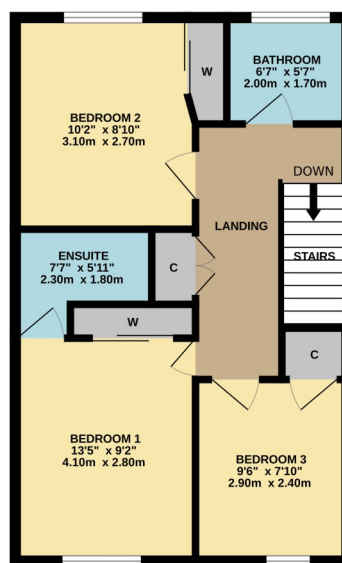


Located in the sought-after Castle Quay estate, this modern end terrace villa offers well-proportioned accommodation over two levels. Built in 2013 by the esteemed Turnberry Homes with families in mind, this stylish home boasts a high interior specification, panelled doors, and a contemporary open-plan

GROUND FLOOR
495 sq.ft. (46.0 sq.m.) approx.



1ST FLOOR
495 sq.ft. (46.0 sq.m.) approx.



THREE BEDROOM END TERRACE

TOTAL FLOOR AREA : 990 sq.ft. (92.0 sq.m.) approx.

Whilst every attempt has been made to ensure the accuracy of the floorplan contained here, measurements of doors, windows, rooms and any other items are approximate and no responsibility is taken for any error, omission or mis-statement. This plan is for illustrative purposes only and should be used as such by any prospective purchaser. The services, systems and appliances shown have not been tested and no guarantee as to their operability or efficiency can be given.

Made with Metropix ©2025



David Muir Estate Agents
2 Church Street, Dumbarton,
G82 1QL



Tel 01389 734366
Fax 01389 742476



tracy@davidmuirestates.co.uk



davidmuirestates.com



davidmuirestates

Travel Directions

From the agents office head East on Glasgow Road, after the roundabout at Morrisons turn right onto Leven Street, then take first right and follow the road veering right then left. No 24 is on your left

Additional Information

Home Report Valuation: £250,000

Asking Price: Offers Over £249,000

Council Tax Band: E

Energy Efficiency Rating: C

Double Glazing

Gas Central Heating

Home Report

This property benefits from a Home Report which can be obtained from davidmuirestates.com or onesurvey.org

Disclaimer

These property details are set out as a general outline only and do not constitute any part of an Offer or Contract. All fixtures and fittings mentioned in these particulars are included in the sale. All others in the property are specifically excluded. Photographs are reproduced for general information and it must not be inferred that any item is included for sale with the property. All measurements, distances and areas are approximate and for guidance only.