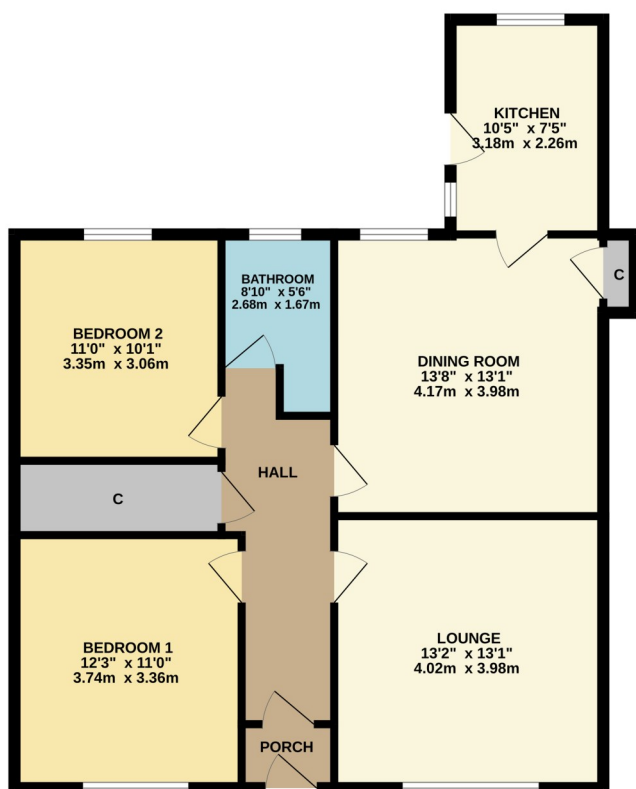




GROUND FLOOR
851 sq.ft. (79.1 sq.m.) approx.



David Muir Estate Agents offer to the market this spacious three-bedroom lower cottage flat which is conveniently located close to nurseries, schooling, shops and public transport links.



TWO BEDROOM LOWER COTTAGE FLAT

TOTAL FLOOR AREA : 851 sq.ft. (79.1 sq.m.) approx.

Whilst every attempt has been made to ensure the accuracy of the floorplan contained here, measurements of doors, windows, rooms and any other items are approximate and no responsibility is taken for any error, omission or mis-statement. This plan is for illustrative purposes only and should be used as such by any prospective purchaser. The services, systems and appliances shown have not been tested and no guarantee as to their operability or efficiency can be given.
Made with Metropix G2025



David Muir Estate Agents
2 Church Street, Dumbarton,
G82 1QL



Tel 01389 734366
Fax 01389 742476



tracy@davidmuirestates.co.uk



davidmuirestates.com



davidmuirestates

Travel Directions

From the agents office in Church Street proceed to roundabout and take the 2nd exit off, under railway bridge into Townend Road. Take the second on your right after Braehead Primary school into Doveholm. No 1 is immediately on your left. Main door at front.

Additional Information

Home Report Valuation: £165,000

Asking Price: Offers Over £160,000

Council Tax Band: D

Energy Efficiency Rating: C

Double Glazing

Gas Central Heating

Home Report

This property benefits from a Home Report which can be obtained from davidmuirestates.com or onesurvey.org

Disclaimer

These property details are set out as a general outline only and do not constitute any part of an Offer or Contract. All fixtures and fittings mentioned in these particulars are included in the sale. All others in the property are specifically excluded. Photographs are reproduced for general information and it must not be inferred that any item is included for sale with the property. All measurements, distances and areas are approximate and for guidance only.