



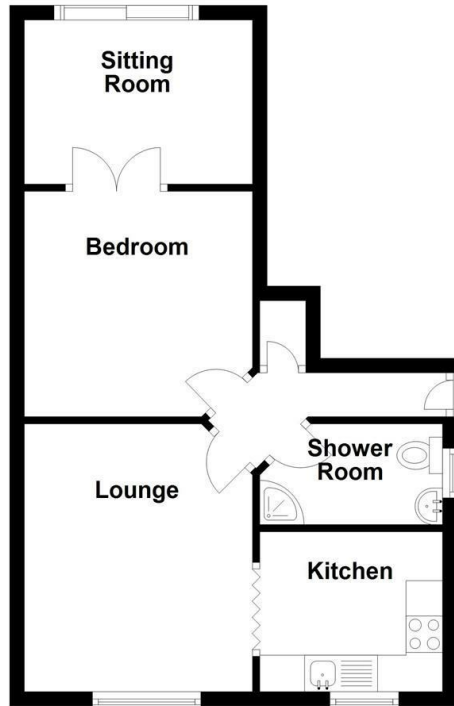
Station Road, Marston Green

£795 Per Month

FLOOR PLAN

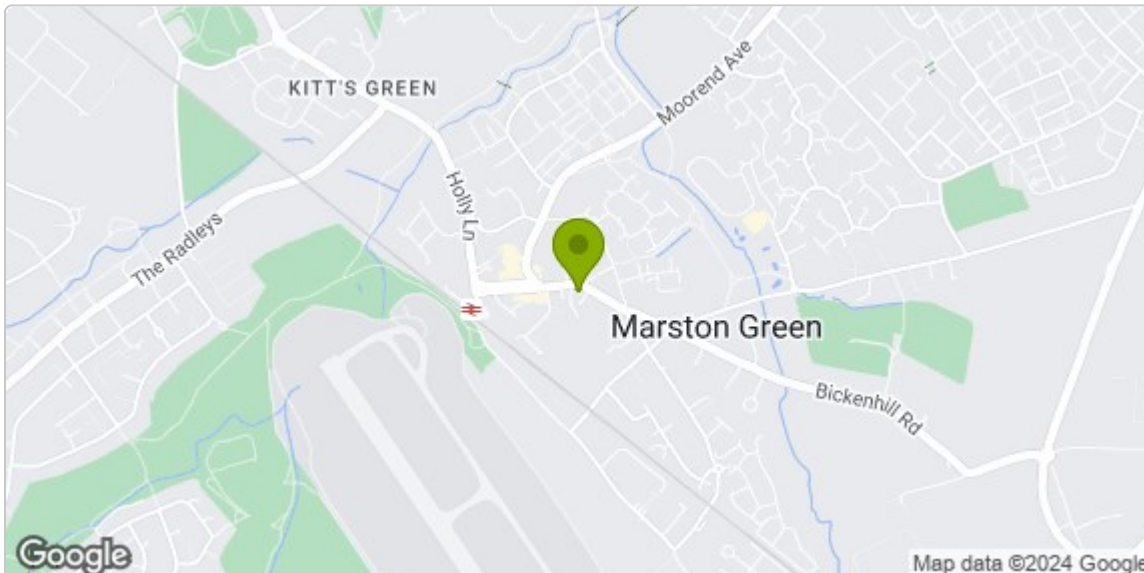
Please note that all measurements and floor plans are approximate and quoted for general guidance only and whilst every attempt has been made to ensure accuracy, they must not be relied on and do not form part of any contract.

Ground Floor



Total area: approx. 40.9 sq. metres (439.8 sq. feet)

Council tax band A



Full Postal Address:
59 Station Road Marston
Green Birmingham B37 7BA

Council Tax Band: A

Energy Efficiency Rating		
	Current	Potential
Very energy efficient - lower running costs		
(92 plus) A		
(81-91) B		
(69-80) C		
(55-68) D		
(39-54) E		
(21-38) F		
(1-20) G		
Not energy efficient - higher running costs		
		77
	53	
England & Wales	EU Directive 2002/91/EC	