

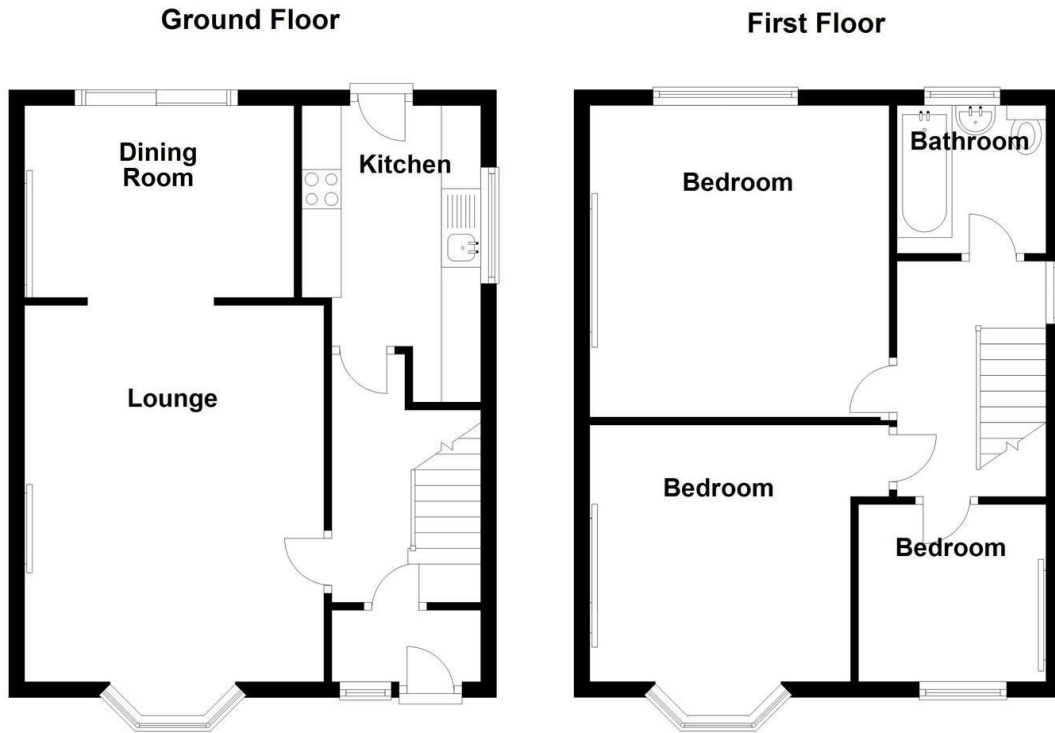


Odensil Green, Solihull

£1,350 Per Month

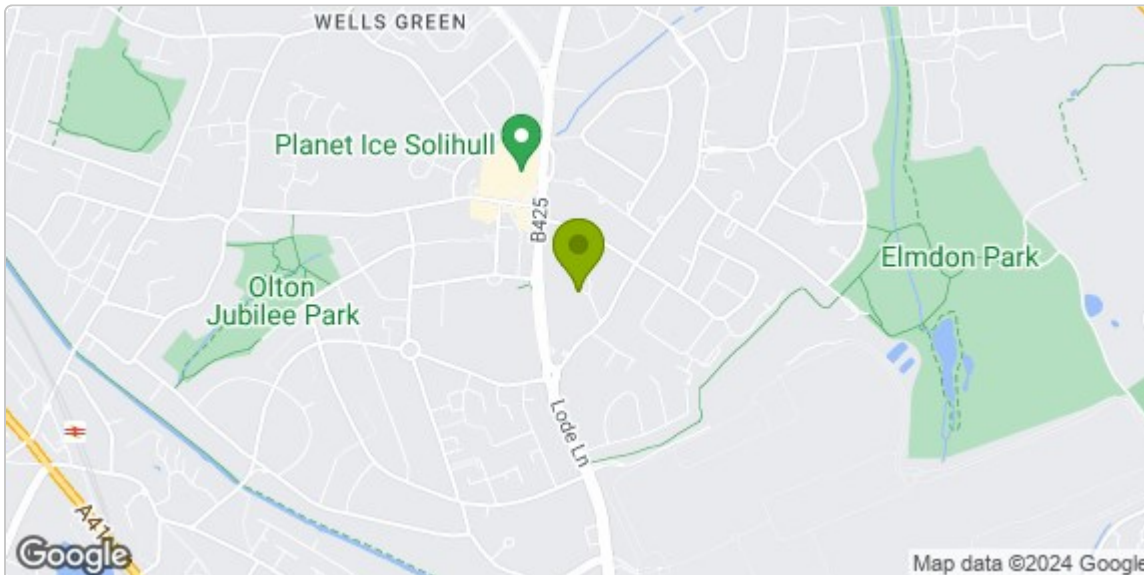
FLOOR PLAN

Please note that all measurements and floor plans are approximate and quoted for general guidance only and whilst every attempt has been made to ensure accuracy, they must not be relied on and do not form part of any contract.



Total area: approx. 85.5 sq. metres (920.2 sq. feet)

Council tax band C



Full Postal Address:
16 Odensil Green Solihull
West Midlands B92 8NA

Council Tax Band: C

| Energy Efficiency Rating | | |
|---|-------------------------|-----------|
| | Current | Potential |
| Very energy efficient - lower running costs | | |
| (92 plus) A | | |
| (81-91) B | | 77 |
| (69-80) C | | |
| (55-68) D | 60 | |
| (39-54) E | | |
| (21-38) F | | |
| (1-20) G | | |
| Not energy efficient - higher running costs | | |
| England & Wales | EU Directive 2002/91/EC | |