



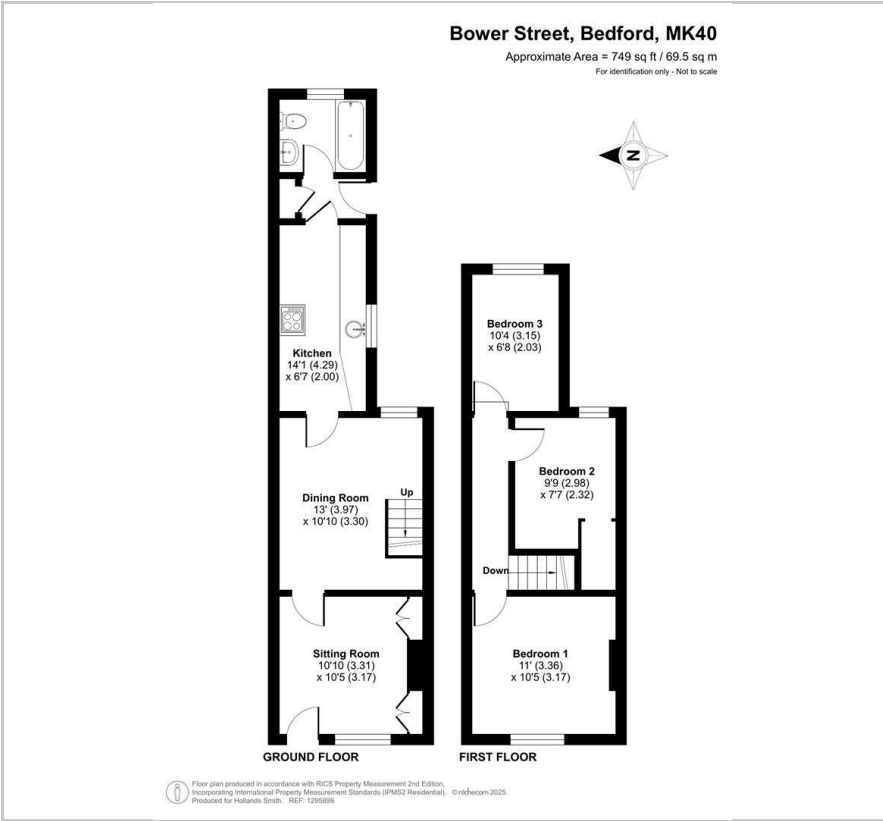
27 Bower Street

, Bedford, MK40 3RD

Asking Price £340,000



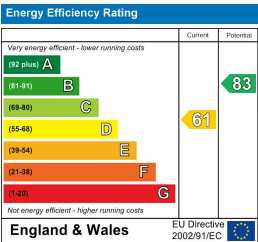
Floor Plan



Area Map



Energy Efficiency Graph



Viewing

Please contact our Bedford Office on 01234 216612 if you wish to arrange a viewing appointment for this property or require further information.

- Recently Refreshed Period Home
- Three Bedrooms
- Close to Park
- Sitting & Dining Rooms
- Kitchen
- Ground Floor Bathroom
- Gas Radiator Heating, uPVC Double Glazing
- Generous Rear Garden
- New Carpets Throughout
- Close to Castle Road's Amenities
- No Onward Chain

This period terraced home is situated within the heart of the popular 'Castle Quarter', just a few yards from Russell Park. Available with no onward chain, the accommodation has been recently refreshed and redecorated to include new carpets throughout. There are three bedrooms, separate sitting and dining rooms, a kitchen and a ground floor bathroom. The garden is larger than typical for the area. Popular with individuals and families alike, the Castle Road area provides a selection of independent coffee shops, delis, pubs and restaurants. A highly rated primary school is also within the vicinity.

Council Tax Band: C EPC Rating: D

Well maintained and presented throughout, the property features gas radiator heating and uPVC double glazing. The property lies within a few yards of Russell Park with the Embankment and attractive river walks beyond.



163 Castle Road, MK40 3RT

Tel: 01234 216612

www.hollandsmith.co.uk

These particulars are believed to be accurate but are not guaranteed to be so. They are intended only as a general guide and cannot be constructed as any form of contract, warranty or offer. No apparatus, equipment, fittings or services have been tested and so we cannot verify that they are in working order. The details are issued on the strict understanding that any negotiations in respect of the property are conducted through Hollands Smith Estate Agents and Valuers.