



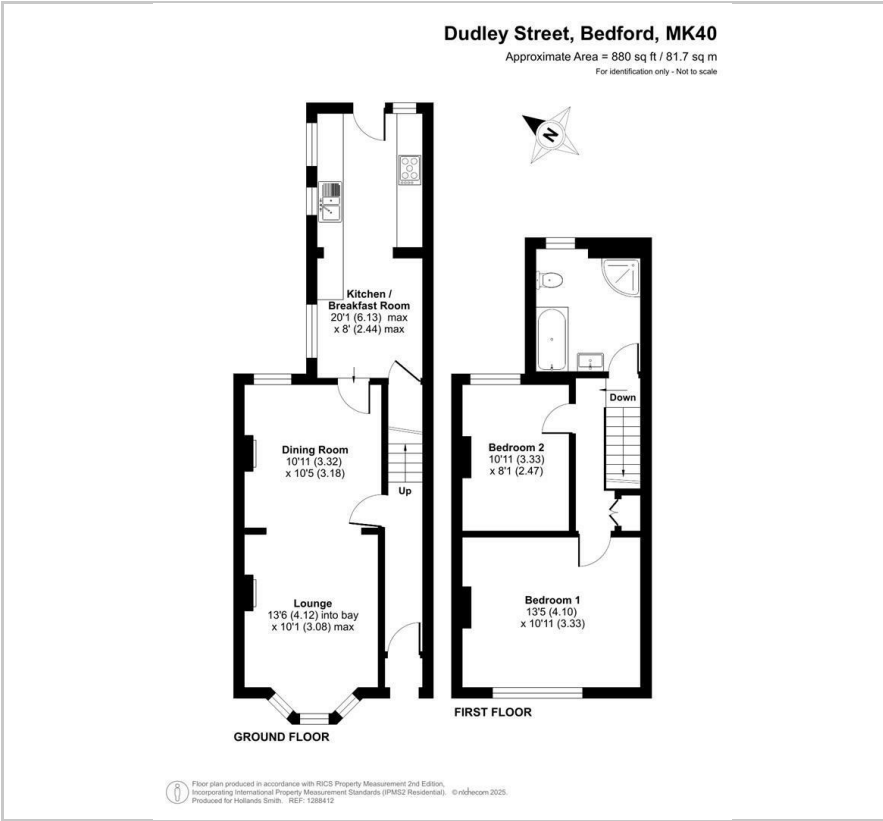
17 Dudley Street

, Bedford, MK40 3TA

£325,000



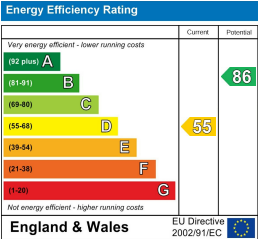
Floor Plan



Area Map



Energy Efficiency Graph



Viewing

Please contact our Bedford Office on 01234 216612 if you wish to arrange a viewing appointment for this property or require further information.

- Period Bay Fronted Terrace
- Two bedrooms
- Sitting/Dining Room
- Kitchen/Breakfast Room
- First Floor Bathroom
- Gas Radiator Heating
- Period Features
- No Chain



This period bay fronted end of terrace home is situated within the highly popular 'Castle Quarter', just a stones throw from Russell Park and The Embankment beyond. Providing a popular layout, the accommodation includes an open plan living/dining room with bay window and cast iron fireplace and a kitchen/breakfast room with modern units and some appliances to remain. There are two double bedrooms and a spacious first floor bathroom which includes a separate shower cubicle. Further period features include some sash windows and picture rails, there is gas to radiator heating from a combination boiler and, outside, an enclosed courtyard style garden. Available with no upward chain, this is a great opportunity for someone to put their own stamp on a property in one of Bedford's most popular areas. In addition to the park and Embankment, further amenities include the choice of cafes, delis and independently-owned shops along Castle Road. Popular pubs, restaurants and shopping facilities are all within walking distance and the area is also home to the outstanding-rated Castle Newnham Primary School. For the commuter, fast links into London are available from the mainline train station. EER: D

163 Castle Road, MK40 3RT

Tel: 01234 216612

www.hollandsmith.co.uk

These particulars are believed to be accurate but are not guaranteed to be so. They are intended only as a general guide and cannot be constructed as any form of contract, warranty or offer. No apparatus, equipment, fittings or services have been tested and so we cannot verify that they are in working order. The details are issued on the strict understanding that any negotiations in respect of the property are conducted through Hollands Smith Estate Agents and Valuers.