



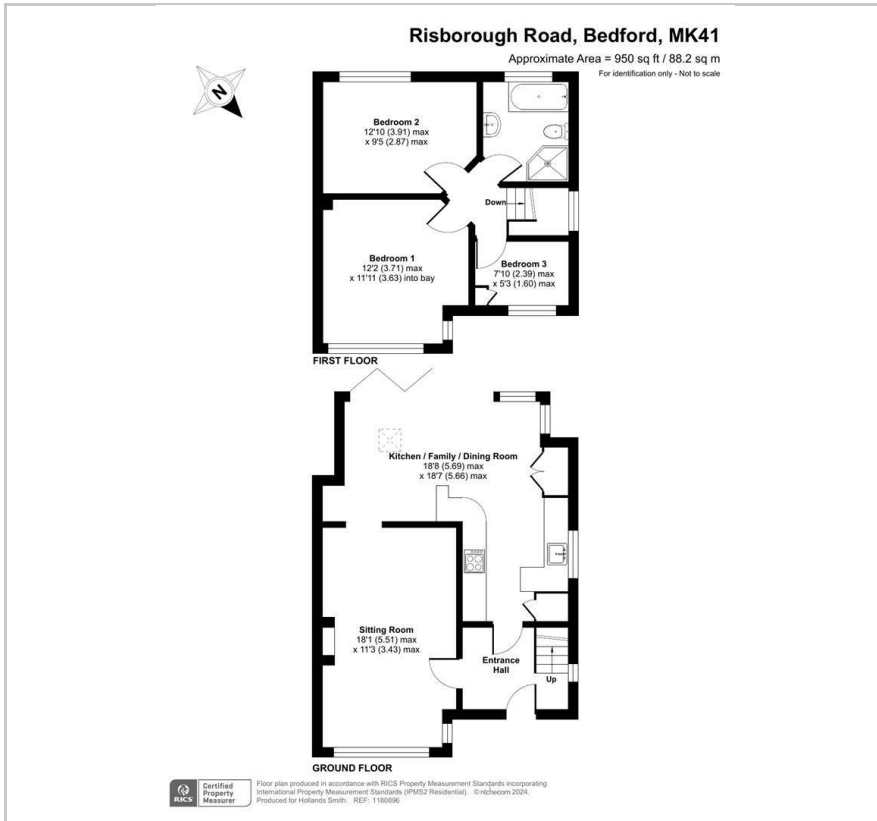
77 Risborough Road

, Bedford, MK41 9QR

£435,000



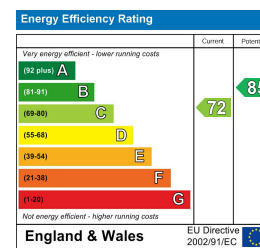
Floor Plan



Area Map

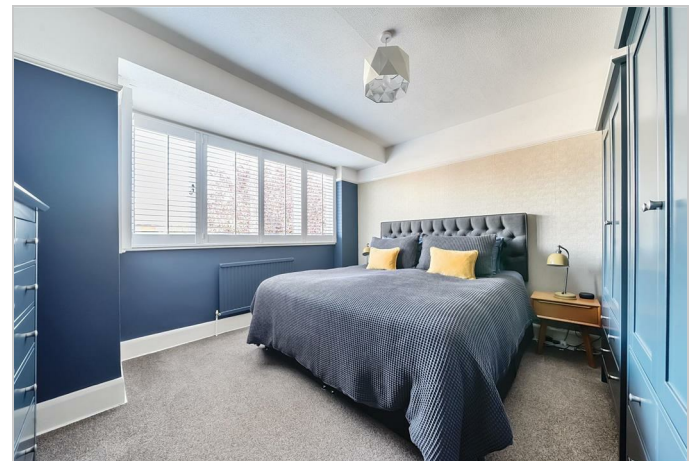


Energy Efficiency Graph



Viewing

Please contact our Bedford Office on 01234 216612 if you wish to arrange a viewing appointment for this property or require further information.



Meticulously improved and updated by the present owners, this established bay fronted semi is quietly situated on a delightful, south facing plot. The tastefully presented accommodation is extended on the ground floor whilst, upstairs, there are three bedrooms and a spacious, remodelled four piece bathroom. The contemporary, extensively fitted kitchen opens into a dining/sitting area where wide bi-fold doors seamlessly combine the house with the newly landscaped garden. The gravelled frontage provides ample parking for three cars. Risborough Road lies close to an array of shops with a cafe and pizzeria and is within walking distance of Priory Country Park and the picturesque Embankment.

EPC Rating: C Council Tax Band: D Payable for 24/25 £2,223

There is gas radiator heating and all of the windows are uPVC double glazed; all of the fitted shutters will remain. The kitchen features quartz worktops, an induction hob with built-in extractor, integrated fridge/freezer, dishwasher and washing machine and fan oven as well as a multi-purpose oven/microwave and a boiling tap. The rear garden is a particular feature of the property. There is a raised patio with two seating areas, a lawn with flower and shrub borders and the garden enjoys a predominantly sunny, south facing aspect.



163 Castle Road, MK40 3RT

Tel: 01234 216612

www.hollandsmith.co.uk