



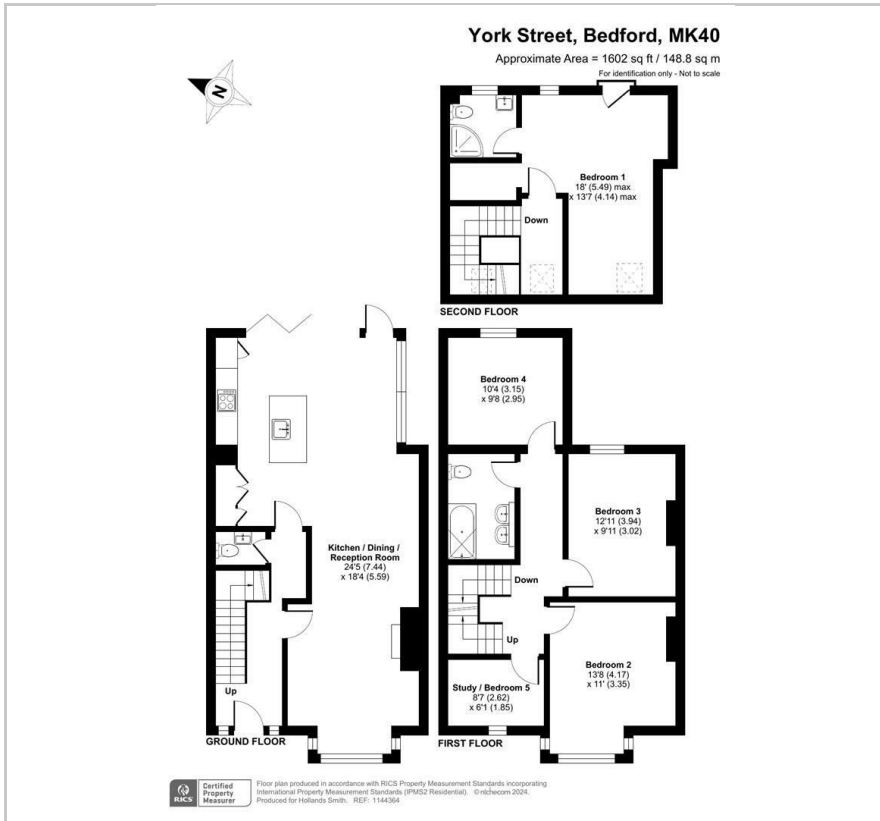
67 York Street

, Bedford, MK40 3RL

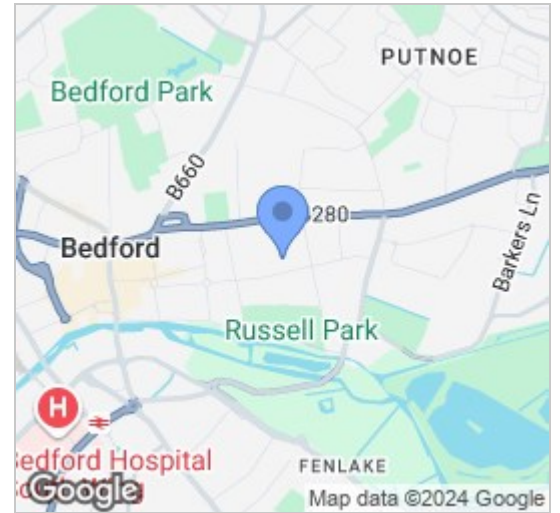
£595,000



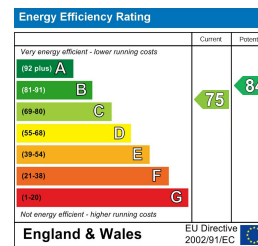
Floor Plan



Area Map



Energy Efficiency Graph

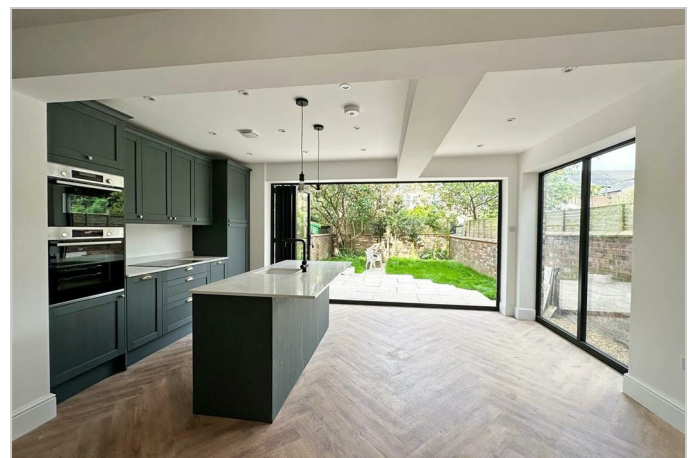


Viewing

Please contact our Bedford Office on 01234 216612 if you wish to arrange a viewing appointment for this property or require further information.



This period bay front terraced home has been the subject of comprehensive renovation and extension by the present owner and occupies a very popular position within the sought-after Castle Road area. Available with no upward chain, the accommodation is arranged over three floors and provides a largely open plan ground floor with a spacious family room including a kitchen area with brand new units, quartz worktops, an island unit and a range of built in appliances. The full-width bi-fold doors give plenty of natural light and there underfloor heating throughout the ground floor. The remodelled first floor now has three double bedrooms as well as a study or nursery and a bathroom with a period style suite. The loft has been converted to provide a large main bedroom with a glazed door and Juliet balcony, a walk-in wardrobe space and the added benefit of an en suite shower room. Further recent improvements include a new central heating system and combination boiler, uPVC sash windows and finished with new flooring and décor throughout. Outside, there is a walled rear garden with a raised patio immediately to the rear. Situated in the heart of the area, the choice of cafes, delis and home improvement shops the area offers and right on the doorstep. Further amenities include a butchers, a bakery and popular restaurants and pubs. The area is also home to the outstanding Castle Newnham Primary School, Russell Park and The Embankment. For the commuter, Bedford offers fast links to London St Pancras by rail. EER: D



163 Castle Road, MK40 3RT

Tel: 01234 216612

www.hollandsmith.co.uk