



20B, MARGARET  
STREET, GREENOCK, PA16 8BU



 neillclerk  
ESTATE AGENTS





## *Description*

Featuring a beautifully presented and character filled interior this substantial three bedroom MAIN DOOR VILLA FLAT is accessed by a staircase with grand pillared entrance. There is a private gated driveway offering essential off street parking for several vehicles. Private gardens extend to the front and side of the property with shared pedestrian access for one of the three other flats situated within the property. The garden features a generous sized lawned plot perfect for relaxing with friends and family on summer days.

A particular feature is the luxury refitted dining kitchen with quality appliances. Specification includes: double glazing and gas central heating. There is detailed ornate detailing to cornices and ceiling roses. Conveniently placed with the West End for local amenities, transport facilities and the waterfront at the Esplanade which is just a short walk away.

The stunning apartments comprise: Entrance Vestibule is reached by a stout timber door and leads to a spacious Reception Hallway by patterned glazed door with side panels, plus ornate archway. There is a dual aspect generous sized Lounge with windows to the front and side, plus beech style fireplace with marble surround/hearth and inset electric fire.

The quality refitted Kitchen benefits from a range of oak style units, solid granite work surfaces and Belfast style sink. Appliances include: "Bosch" stainless steel chimney extractor hood, 5 ring gas hob, electric oven, dishwasher, washing machine and American style fridge/freezer. A pantry store features a staircase leading to the side of the building.

There are two double sized Bedrooms and 3rd single Bedroom. The front facing 1st bedroom is a particularly spacious room. The Bathroom with rear window offers a three piece suite comprising: pedestal wash hand basin, wc and bath with "Triton" shower. There is a partial wall tiling.

Immediate viewing is essential for this impressive West End home. EPC = D

## *Measurements*

Entrance Vestibule

Reception Hallway

Lounge

5.13m x 7.04m (16'10 x 23'1)

Dining Kitchen

5.11m x 4.37m (16'9 x 14'4)

Pantry store/stair

Bedroom 1

5.11m x 4.37m (16'9 x 14'4)

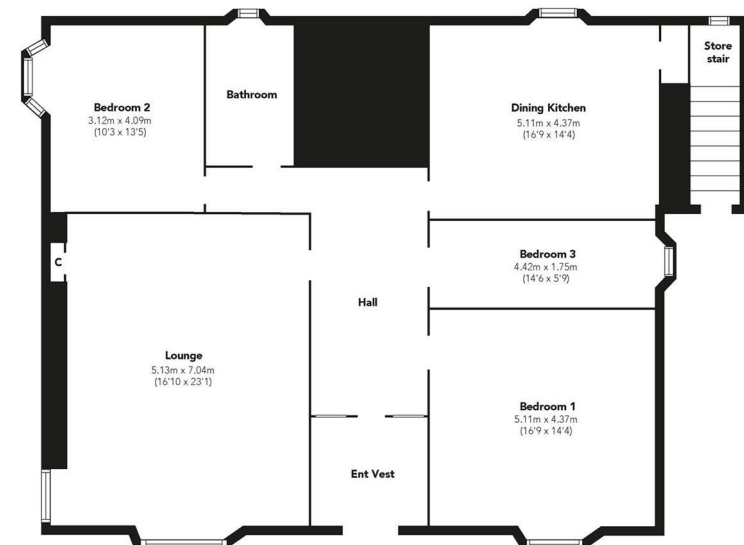
Bedroom 2

3.12m x 4.09m (10'3 x 13'5)

Bedroom 3

4.42m x 1.75m (14'6 x 5'9)

Bathroom

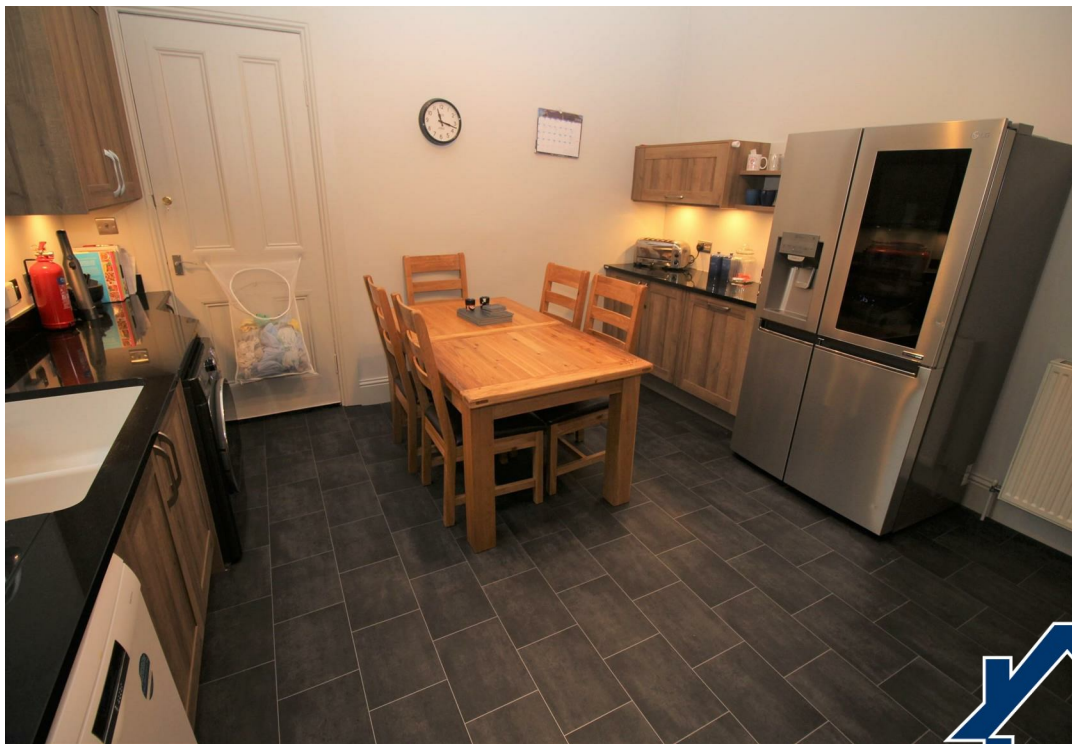


Floorplans are indicative only - not to scale  
Produced by Plushplans 





















#### Agents Notes:

These sales particulars are set out as a general outline only, issued in good faith, but do not constitute representations of fact and do not form part of any offer or contract. Any services, equipment, appliances, fittings or central heating systems have not been tested and no warranty is given or implied that these are in working order. All measurements are approximate and for guidance only.

Neither Neill Clerk Estate Agents nor any of its employees or agents has any authority to make or give any representation or warranty whatever in relation to this property.

The  
next  
step..



To view call 01475 888400. Speak to us 7 days a week until 11pm every day to book your viewing appointment.

#### House to sell or rent?

Call 01475 888400 to book your free market appraisal.

#### Require a solicitor?

Ask us to supply a free legal quotation from Neill Clerk & Murray, Solicitors.  
[www.neillclerkmurray.co.uk](http://www.neillclerkmurray.co.uk)

Stay fully up-to-date by following Neill Clerk on:



**60 West Blackhall Street  
Greenock  
Renfrewshire  
PA15 1UY**

**t: 01475 888400**

**e: [sales@neillclerk.co.uk](mailto:sales@neillclerk.co.uk)**

**w: [www.neillclerk.co.uk](http://www.neillclerk.co.uk)**



Find all our properties at: [rightmove](https://www.rightmove.co.uk) [Zoopla](https://www.zoopla.co.uk) [onTheMarket.com](https://www.onthemarket.com) [s1homes.com](https://www.s1homes.com)