

A three-story stone building with a central entrance. The building is constructed from light-colored stone blocks. It has several windows, some of which are double-hung. A satellite dish is mounted on the left side of the building. The entrance is a small doorway with a yellow door, flanked by stone pillars. The number '24' is visible above the door.

24F, WELLINGTON
STREET, GREENOCK, PA15 4NH







Description

This two bedroom THIRD FLOOR FLAT is situated within a highly desirable central location. Convenient for local shops, amenities and transport facilities including rail and bus stations.

Specification includes: double glazing, gas central heating and communal gardens.

Apartments comprise: Hallway with large storage cupboard leading to bright front facing Lounge. The Kitchen has a range of floor and wall mounted units. Appliances include: electric hob and electric oven, washing machine and under counter fridge and freezer. There are two double sized Bedrooms and Shower Room. with separte W.C room.

Applications are subject to financial criteria checks.

LLR: 158475/280/11370

LARN1901039



Measurements

Hallway

Lounge

Kitchen

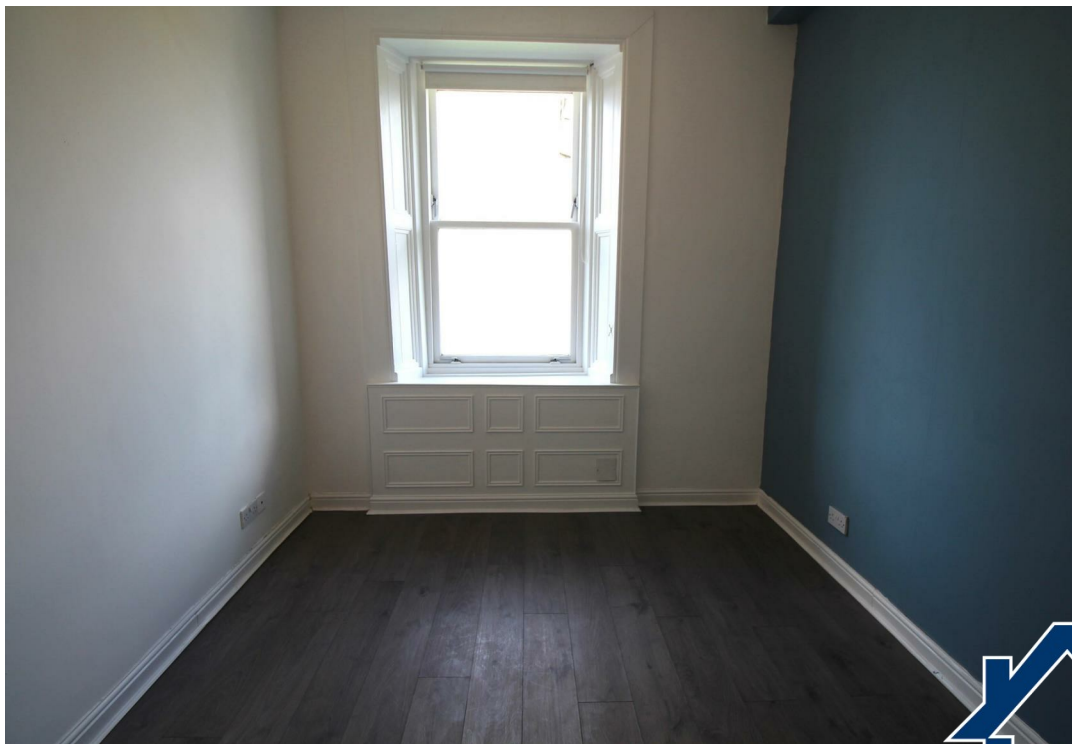
Bedroom 1

Bedroom 2

Shower Room

W.C.









The
next
step..



To view call 01475 888400. Speak to us 7 days a week until 11pm every day to book your viewing appointment.

House to sell or rent?

Call 01475 888400 to book your free market appraisal.

Require a solicitor?

Ask us to supply a free legal quotation from Neill Clerk & Murray, Solicitors.
www.neillclerkmurray.co.uk

Stay fully up-to-date by following Neill Clerk on:



**60 West Blackhall Street
Greenock
Renfrewshire
PA15 1UY**

t: 01475 888400

e: sales@neillclerk.co.uk

w: www.neillclerk.co.uk



Agents Notes:

These sales particulars are set out as a general outline only, issued in good faith, but do not constitute representations of fact and do not form part of any offer or contract. Any services, equipment, appliances, fittings or central heating systems have not been tested and no warranty is given or implied that these are in working order. All measurements are approximate and for guidance only.

Neither Neill Clerk Estate Agents nor any of its employees or agents has any authority to make or give any representation or warranty whatever in relation to this property.

Find all our properties at: [**rightmove**](#) [**Zoopla**](#) [**nTheMarket.com**](#) [**s1homes.com**](#)