



**164, DUNLOP STREET, GREENOCK, PA16
9DP**





Description

This upgraded and modernised beautifully presented three bedroom SEMI DETACHED VILLA offers an ideal family home within a highly desirable location. The property was reroofed and reroughcast around 15 years ago. Enjoys a corner location set back from Dunlop Street with lawned gardens extending to the front, side and rear which is perfect for relaxing with family/friends on summer days.

Specification includes: double glazing and gas central heating with new heating system and boiler installed in 2023. Conveniently situated for local primary and secondary schooling, amenities and transport facilities.

The stylish family apartments comprise: Entrance Hallway by UPVC double glazed door with inbuilt cupboard and front facing window. The bright dual aspect Lounge features windows to the front and rear with feature oak style fireplace/slate hearth and living flame gas fire.

There is a rear facing Kitchen which was refitted in 2018 with quality dark grey high gloss units and oak style work surfaces. Appliances include: stainless steel chimney extractor hood, gas hob, electric oven, integrated washer dryer and fridge/freezer. There is wall tiling and decorative panelled ceiling with downlighters. A UPVC double glazed door leads to the garden.

The downstairs Shower Room which was refitted in 2017 with side window features a quality three piece suite offering: vanity wash hand basin set within soft cream high gloss unit, wc and double sized shower cubicle with "Triton" style shower. Additional benefits include: wall/floor tiling, chrome heated towel rail and decorative panelled ceiling.

A staircase leads to the Upper Landing with front window and hatch to the loft. There are three double sized Bedrooms which is ideal for family living.

Viewing is highly recommended for this family home. EPC = C.

Measurements

Hallway

Lounge

5.61m x 3.35m (18'5 x 11'0)

Kitchen

3.84m x 1.91m (12'7 x 6'3)

Downstairs Shower Room

Upper Landing

Bedroom 1

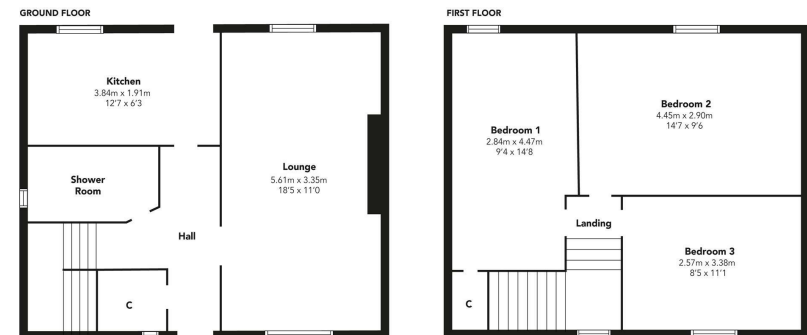
2.84m x 4.47m (9'4 x 14'8)

Bedroom 2

4.45m x 2.90m (14'7 x 9'6)

Bedroom 3

2.57m x 3.38m (8'5 x 11'1)

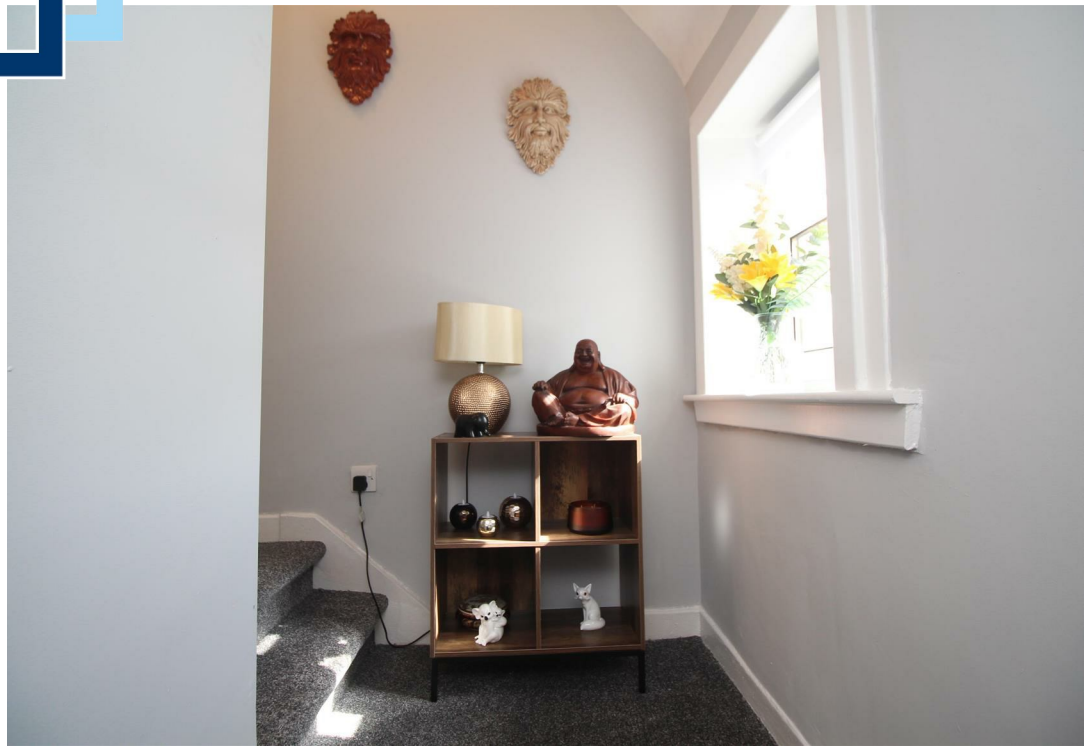


Floorplans are indicative only - not to scale
Produced by Plusplans 











Agents Notes:

These sales particulars are set out as a general outline only, issued in good faith, but do not constitute representations of fact and do not form part of any offer or contract. Any services, equipment, appliances, fittings or central heating systems have not been tested and no warranty is given or implied that these are in working order. All measurements are approximate and for guidance only.

Neither Neill Clerk Estate Agents nor any of its employees or agents has any authority to make or give any representation or warranty whatever in relation to this property.

The
next
step..



To view call 01475 888400. Speak to us 7 days a week until 11pm every day to book your viewing appointment.

House to sell or rent?

Call 01475 888400 to book your free market appraisal.

Require a solicitor?

Ask us to supply a free legal quotation from Neill Clerk & Murray, Solicitors.
www.neillclerkmurray.co.uk

Stay fully up-to-date by following Neill Clerk on:



**60 West Blackhall Street
Greenock
Renfrewshire
PA15 1UY**

t: 01475 888400

e: sales@neillclerk.co.uk

w: www.neillclerk.co.uk



Find all our properties at: [rightmove](https://www.rightmove.co.uk) [Zoopla](https://www.zoopla.co.uk) [onTheMarket.com](https://www.onthemarket.com) [s1homes.com](https://www.s1homes.com)