



35, OLD INVERKIP
ROAD, GREENOCK, PA16 9AG





Description

Enjoying a highly desirable prime position overlooking mature trees and the park this four bedroom UPPER QUARTER VILLA which is set over two levels is reached by a private side entrance door. A degree of upgrading is required which is reflected in the asking price. The property lies close to local schooling, transport facilities and the town centre is a short distance away. Pebbled driveway offers off street parking.

There is a private section of rear garden which is a south facing plot containing a selection of mature shrubs/plants with lawned area beyond. There is a timber shed and cellar store. Specification includes: double glazing to the first floor level and gas central heating.

The family apartments comprise: Entrance Porch by double glazed door with tiled floor leads by single glazed door to the Staircase with further single glazed door giving access to the Hallway which has an inbuilt cupboard. There is a four light bay windowed front facing Lounge with views over the park and tiled fireplace. Access from the lounge leads to the upper apartments. There is a rear facing Kitchen with basic fitted units, work surfaces and splashback tiling.

There are two double sized Bedrooms on the first floor. The front facing 1st bedroom features a four light bay window formation. The Bathroom with rear window offers a traditional suite comprising: pedestal wash hand basin, wc and bath with mixer shower.

Upstairs by staircase with front facing single glazed stained glass window leads to the Upper Landing. There are two further Bedrooms on this floor with single glazed skylight windows and access to the eaves. The 4th bedroom could also be used as a home office/study.

Early inspection is essential for a home in this sought after location. EPC = D

Measurements

Entrance Porch

Staircase

Hallway

Lounge

3.23m x 5.18m (10'7 x 17'0)

Kitchen

2.44m x 3.07m (8'0 x 10'1)

Bedroom 1

3.25m x 4.01m (10'8 x 13'2)

Bedroom 2

3.33m x 3.02m (10'11 x 9'11)

Bathroom

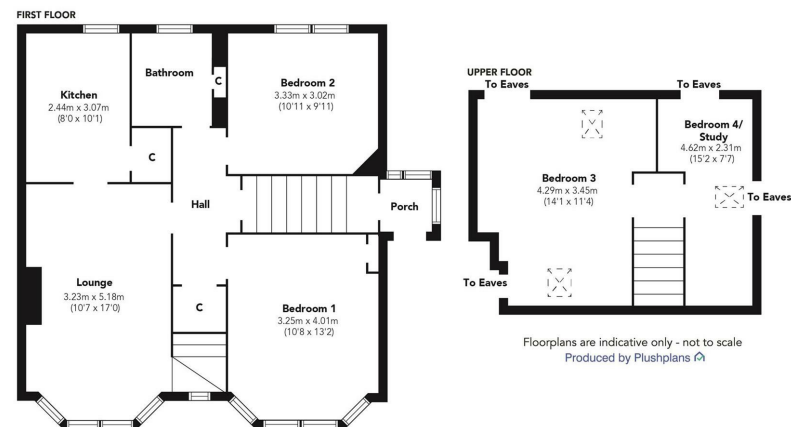
Upper Landing

Bedroom 3

4.29m x 3.45m (14'1 x 11'4)

Bedroom 4 / Study

4.62m x 2.31m (15'2 x 7'7)

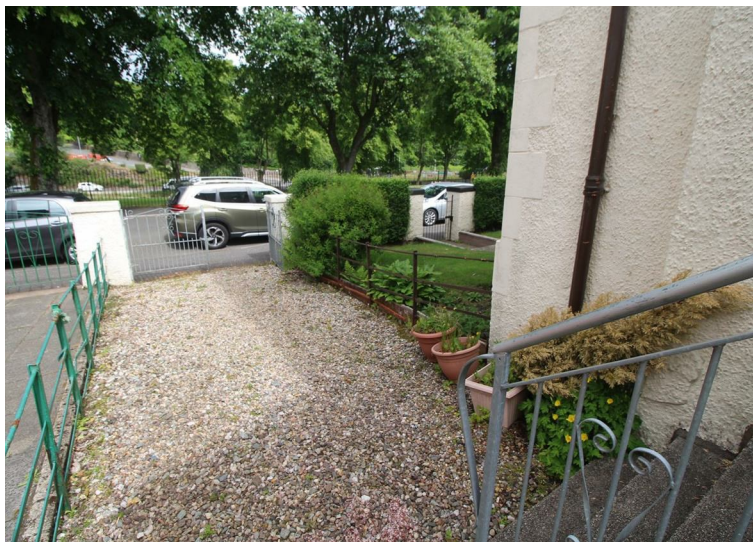
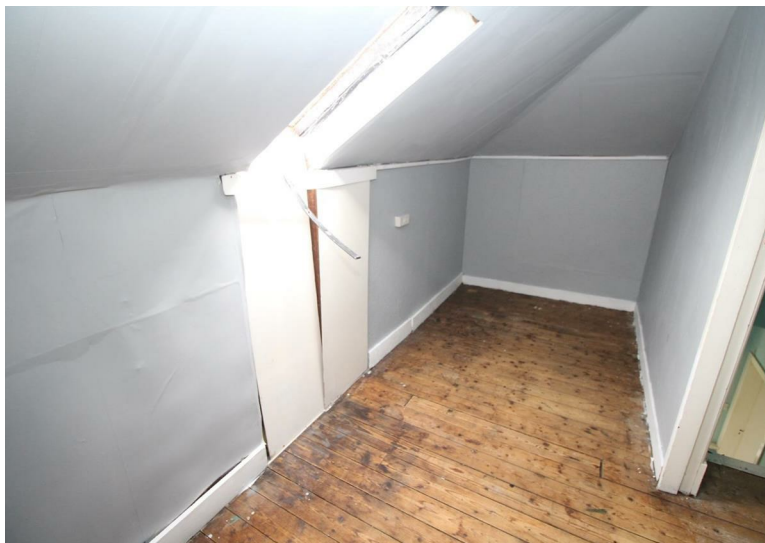












Agents Notes:

These sales particulars are set out as a general outline only, issued in good faith, but do not constitute representations of fact and do not form part of any offer or contract. Any services, equipment, appliances, fittings or central heating systems have not been tested and no warranty is given or implied that these are in working order. All measurements are approximate and for guidance only.

Neither Neill Clerk Estate Agents nor any of its employees or agents has any authority to make or give any representation or warranty whatever in relation to this property.

The
next
step..



To view call 01475 888400. Speak to us 7 days a week until 11pm every day to book your viewing appointment.

House to sell or rent?

Call 01475 888400 to book your free market appraisal.

Require a solicitor?

Ask us to supply a free legal quotation from Neill Clerk & Murray, Solicitors.
www.neillclerkmurray.co.uk

Stay fully up-to-date by following Neill Clerk on:



**60 West Blackhall Street
Greenock
Renfrewshire
PA15 1UY**

t: 01475 888400

e: sales@neillclerk.co.uk

w: www.neillclerk.co.uk



Find all our properties at: [rightmove](https://www.rightmove.co.uk) [Zoopla](https://www.zoopla.co.uk) [onTheMarket.com](https://www.onthemarket.com) [s1homes.com](https://www.s1homes.com)