



51, TAYMOUTH DRIVE, GOUROCK, PA19
1HJ



 neillclerk
ESTATE AGENTS



Description

CLOSING DATE Wednesday 28th May at 11am

This bright three bedroom DETACHED BUNGALOW is of style rarely available within the sought after Castle Levan Estate. There are two separate driveways offering off street parking for two cars. There are impressive rear views towards the Firth of Clyde and Argyllshire hills spanning from Dunoon to the Holy Loch, Loch Long and Rosneath Peninsula. The westerly aspect is perfect for enjoying summertime sunsets over Argyll.

The gardens feature lawned areas which extend to the front, side and rear of the property plus an additional pebbled plot and paved patio area providing space to relax on summer days with friends and family. Specification includes: double glazing and gas central heating. There is a partially floored loft accessed by hatch and metal pull down ladder hatch from the inner hallway.

Family apartments comprise: Entrance Vestibule by UPVC double glazed door with side windows. The airy Lounge/Dining Room is an "L" shaped apartment and features sliding patio doors leading to a balcony rail with panoramic views plus there is a further three light side window formation and front window.

The Kitchen offers a front facing window and UPVC double glazed door leading to the side of the house. Specification includes: maple style fitted units , beige toned surfaces and splashback tiling. Appliances include: stainless steel chimney extractor hood, gas hob, electric oven, fridge and washing machine. An Inner Hall offers an inbuilt cupboard and loft access.

There are two double sized Bedrooms with wardrobe/recess storage and 3rd single Bedroom. The Wet Room has a modern suite comprising: pedestal wash hand basin, wc and chrome style shower. Additional features include: a wet floor, wet wall panelling and decorative panelled ceiling.

Inspection is recommended for this three bedroom family home within a popular cul de sac location. EPC = C.

Measurements

Entrance Vestibule

Lounge/Dining Room
6.48m x 5.00m (21'3 x 16'5)

Kitchen
3.02m x 3.05m (9'11 x 10'0)

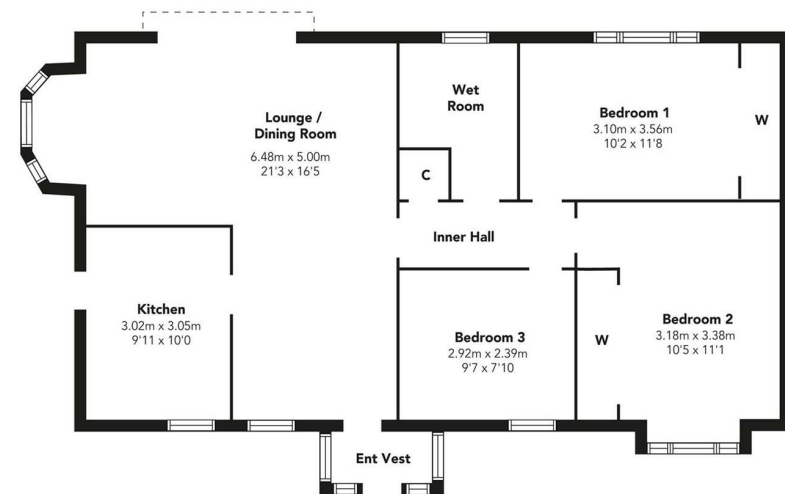
Inner Hall

Bedroom 1
3.10m x 3.56m (10'2 x 11'8)

Bedroom 2
3.18m x 3.38m (10'5 x 11'1)

Bedroom 3
2.92m x 2.39m (9'7 x 7'10)

Wet Room



Floorplans are indicative only - not to scale
Produced by Plushplans 











Agents Notes:

These sales particulars are set out as a general outline only, issued in good faith, but do not constitute representations of fact and do not form part of any offer or contract. Any services, equipment, appliances, fittings or central heating systems have not been tested and no warranty is given or implied that these are in working order. All measurements are approximate and for guidance only.

Neither Neill Clerk Estate Agents nor any of its employees or agents has any authority to make or give any representation or warranty whatever in relation to this property.

The
next
step..



To view call 01475 888400. Speak to us 7 days a week until 11pm every day to book your viewing appointment.

House to sell or rent?

Call 01475 888400 to book your free market appraisal.

Require a solicitor?

Ask us to supply a free legal quotation from Neill Clerk & Murray, Solicitors.
www.neillclerkmurray.co.uk

Stay fully up-to-date by following Neill Clerk on:



**60 West Blackhall Street
Greenock
Renfrewshire
PA15 1UY**

t: 01475 888400

e: sales@neillclerk.co.uk

w: www.neillclerk.co.uk



Find all our properties at: [rightmove](https://www.rightmove.co.uk) [Zoopla](https://www.zoopla.co.uk) [onTheMarket.com](https://www.onthemarket.com) [s1homes.com](https://www.s1homes.com)