



**FLAT B, 48, FORSYTH STREET, LINDON
MANSIONS, GREENOCK, PA16 8DY**



 **neillclerk**
ESTATE AGENTS



Description

Featuring an immaculately presented and upgraded interior this two bedroom GARDEN FLAT lies in the elegant and character filled "B" listed "Lindon Mansions" development which is a distinctive sandstone former mansion house in Greenock's West End. There is a private section of enclosed garden with paved patio. A further benefit is the generous sized communal courtyard located to the side of the property which has been attractively landscaped with seating areas.

Specification includes: electric heating, double glazing and hardwood flooring. The building is protected by a security entry system. We are advised that the current owner had been granted permission to replace a side window in the bedroom with a door to provide direct access to the private section of garden, which has now lapsed.

The impressive pristine apartments comprise: Shared Reception Area which leads by timber door to the welcoming "T" shaped Hallway with ornate detailing and storage cupboard. The airy Lounge enjoys a corner setting with side and rear windows. There is a quality refitted Dining Kitchen featuring olive style units and oak effect work surfaces. Range of appliances include: extractor hood, electric ceramic hob, oven, integrated dishwasher, washing machine and fridge/freezer. There is space for a table and chairs.

The Master Bedroom benefits from fitted mirrored wardrobes and a luxury Ensuite Shower Room which features vanity wash hand basin set within white high gloss unit, wc and shower cubicle with chrome style shower. Additional benefits include: wet wall panelling and chrome style heated towel rail. There is a 2nd double Bedroom with fitted mirrored wardrobes. The quality refitted Bathroom offers a suite comprising: vanity wash hand basin set within white high gloss unit, wc and double sized shower cubicle. Specification includes: wall and floor tiling, plus decorative panelled ceiling.

This stunning West End flat with private garden must be seen. EPC = D.

Measurements

Hallway

Lounge
3.94m x 5.41m (12'11 x 17'9)

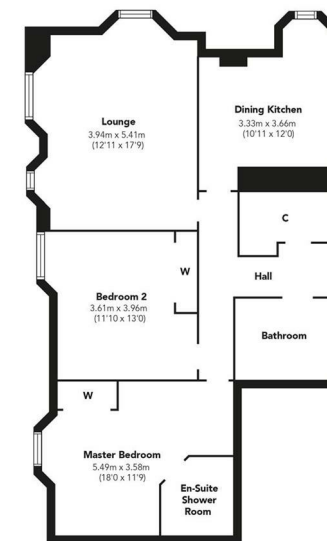
Dining Kitchen
3.33m x 3.66m (10'11 x 12'0)

Master Bedroom
5.49m x 3.58m (18'0 x 11'9)

Ensuite Shower Room

Bedroom 2
3.61m x 3.96m (11'10 x 13'0)

Bathroom



Floorplans are indicative only - not to scale
Produced by Plusplans











The
next
step..



To view call 01475 888400. Speak to us 7 days a week until 11pm every day to book your viewing appointment.

House to sell or rent?

Call 01475 888400 to book your free market appraisal.

Require a solicitor?

Ask us to supply a free legal quotation from Neill Clerk & Murray, Solicitors.
www.neillclerkmurray.co.uk

Stay fully up-to-date by following Neill Clerk on:



**60 West Blackhall Street
Greenock
Renfrewshire
PA15 1UY**

t: 01475 888400

e: sales@neillclerk.co.uk

w: www.neillclerk.co.uk



Agents Notes:

These sales particulars are set out as a general outline only, issued in good faith, but do not constitute representations of fact and do not form part of any offer or contract. Any services, equipment, appliances, fittings or central heating systems have not been tested and no warranty is given or implied that these are in working order. All measurements are approximate and for guidance only.

Neither Neill Clerk Estate Agents nor any of its employees or agents has any authority to make or give any representation or warranty whatever in relation to this property.

Find all our properties at: [rightmove](https://www.rightmove.co.uk) [Zoopla](https://www.zoopla.co.uk) [onTheMarket.com](https://www.onthemarket.com) [s1homes.com](https://www.s1homes.com)