



8C, MARGARET
STREET, GREENOCK, PA16 8AS





Description

CLOSING DATE Friday 11th April at 3pm

Occupying a highly desirable West End location situated next to the waterfront just off the Esplanade this beautifully presented 2 bedroom FIRST FLOOR FLAT has been comprehensively upgraded in recent years to offer modern & stylish living within a distinctive traditional red sandstone property. There are oblique front views to the Esplanade & River Clyde. There is an attractive entrance stair with period style ornate handrails, stained glass windows & feature wall tiling with painted river scenes.

Specification includes: double glazing, gas central heating & laminate flooring. Building is protected by a security entry system. We are advised that the windows & central heating system were installed in 2017. A shared drying green is located to the rear.

Highly impressive apartments comprise: Entrance Vestibule by double timber doors leads to the Reception Hallway with ornate cornice & ceiling rose plus storage cupboard. The bright spacious front facing bay windowed Lounge features an ornate ceiling rose, corning plus focal point marble fireplace with electric fire & walk in storage cupboard.

There is a quality refitted Dining Kitchen which offers cream units, oak effect work surface areas & splashback tiling. A range of integrated appliances includes: stainless steel chimney extractor hood, gas hob, double electric oven, washing machine, dishwasher & fridge/freezer. This is a perfect space for relaxing & entertaining.

There are 2 double sized Bedrooms which both benefit from quality wardrobe units & there are also two storage cupboards in bedroom 1. The luxury refitted Shower Room with rear window offers a 4 piece suite comprising: vanity wash hand basin set within white high gloss unit, wc, bath with mixer shower & double sized shower cubicle with chrome style shower. Specification includes: partial wall tiling, tiled floor & decorative ceiling with downlights.

Viewing highly recommended . EPC= C.

Measurements

Entrance Vestibule

Reception Hallway

Lounge

4.52m x 5.74m (14'10 x 18'10)

Dining Kitchen

3.38m x 4.70m (11'1 x 15'5)

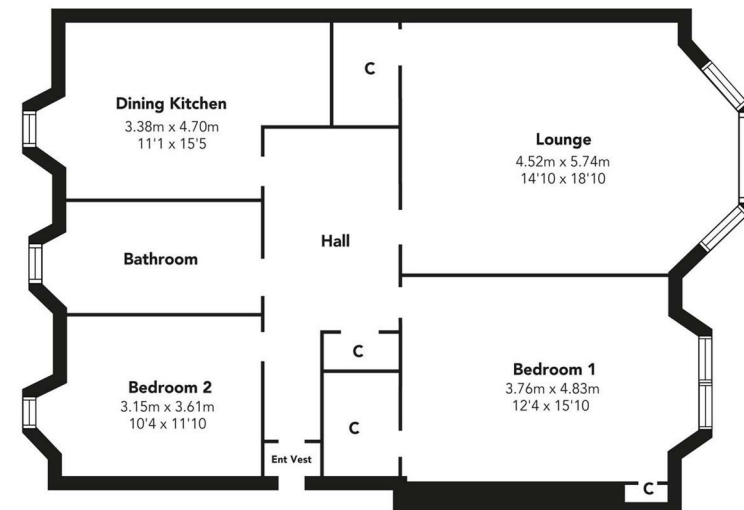
Bedroom 1

3.76m x 4.83m (12'4 x 15'10)

Bedroom 2

3.15m x 3.61m (10'4 x 11'10)

Bathroom



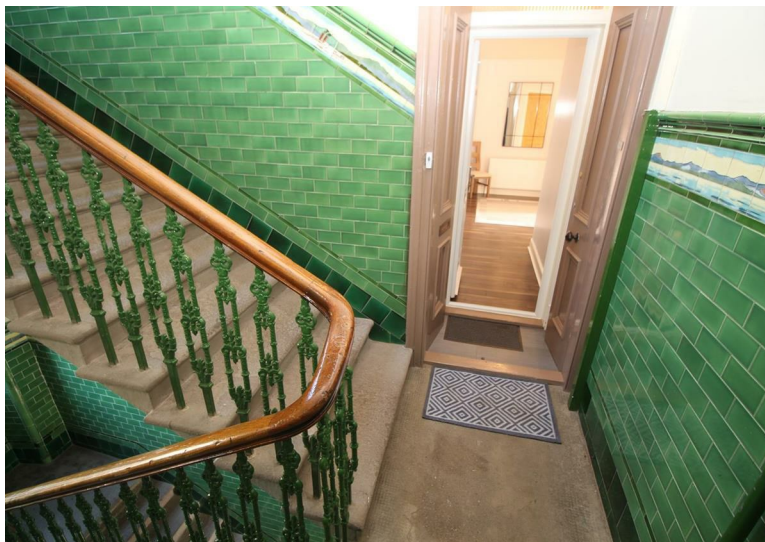
Floorplans are indicative only - not to scale
Produced by Plushplans 











The
next
step..



To view call 01475 888400. Speak to us 7 days a week until 11pm every day to book your viewing appointment.

House to sell or rent?

Call 01475 888400 to book your free market appraisal.

Require a solicitor?

Ask us to supply a free legal quotation from Neill Clerk & Murray, Solicitors.
www.neillclerkmurray.co.uk

Stay fully up-to-date by following Neill Clerk on:



**60 West Blackhall Street
Greenock
Renfrewshire
PA15 1UY**

t: 01475 888400

e: sales@neillclerk.co.uk

w: www.neillclerk.co.uk



Agents Notes:

These sales particulars are set out as a general outline only, issued in good faith, but do not constitute representations of fact and do not form part of any offer or contract. Any services, equipment, appliances, fittings or central heating systems have not been tested and no warranty is given or implied that these are in working order. All measurements are approximate and for guidance only.

Neither Neill Clerk Estate Agents nor any of its employees or agents has any authority to make or give any representation or warranty whatever in relation to this property.

Find all our properties at: [rightmove](https://www.rightmove.co.uk) [Zoopla](https://www.zoopla.co.uk) [onTheMarket.com](https://www.onthemarket.com) [s1homes.com](https://www.s1homes.com)