



9, ROSE CRESCENT, GOUROCK, PA19
1TA





Description

CLOSING DATE WEDNESDAY 5TH FEBRUARY AT 11AM

Occupying a sought after cul de sac location in the highly desirable Midton area this beautifully presented 3 bedroom SEMI DETACHED VILLA offers a perfect family home with rerooughcast exterior. There is a monoblock driveway which provides off street parking for 4 cars. A particular feature is the enclosed spacious landscaped rear garden with large lawn & deck which can be reached by French doors from the lounge/dining room.

There is a summerhouse with bar which is an ideal man cave or gin palace perfect for relaxing with friends and family. Wifi, light & power are installed to the summerhouse and there is decked area next to the glazed double entrance doors.

Specification for the main property includes: double glazing, gas central heating & oak glazed internal doors.

The impressive family apartments comprise: Hallway by UPVC double glazed door with side panels & under stair cupboard. There is a bright, dual aspect Lounge/Dining Room with front facing window & French doors leading to the garden, marble fireplace with living flame gas fire.

The quality Breakfasting Kitchen with side window & UPVC double glazed door to the garden features white high gloss fitted units, grey toned marble effect work surfaces and splashback tiling. Appliances include: stainless steel chimney extractor hood, gas hob, electric oven, washing machine & integrated fridge/freezer.

There is a downstairs Bathroom with side window plus four piece suite comprising: pedestal wash hand basin, wc, bath & shower cubicle with "Triton" shower. Additional benefits include: chrome style heated towel rail, wall/floor tiling & panelled ceiling with downlighters.

Stairs lead to the Upper Landing with front facing window & hatch to the loft. There are 3 bright double sized Bedrooms which are perfect for family living. All the bedrooms feature wardrobe storage.

Early viewing is highly recommended for this excellent family home. EPC = D

Measurements

Entrance Hall

Lounge / Dining Room
3.33m x 6.71m (10'11 x 22'0)

Breakfasting Kitchen
2.77m x 3.30m (9'1 x 10'10)

Downstairs Bathroom

Upper Landing


Bedroom 1
4.67m x 2.84m (15'4 x 9'4)

Bedroom 2
3.30m x 3.12m (10'10 x 10'3)

Bedroom 3
3.30m x 3.33m (10'10 x 10'11)

Summerhouse
3.12m x 3.61m (10'3 x 11'10)

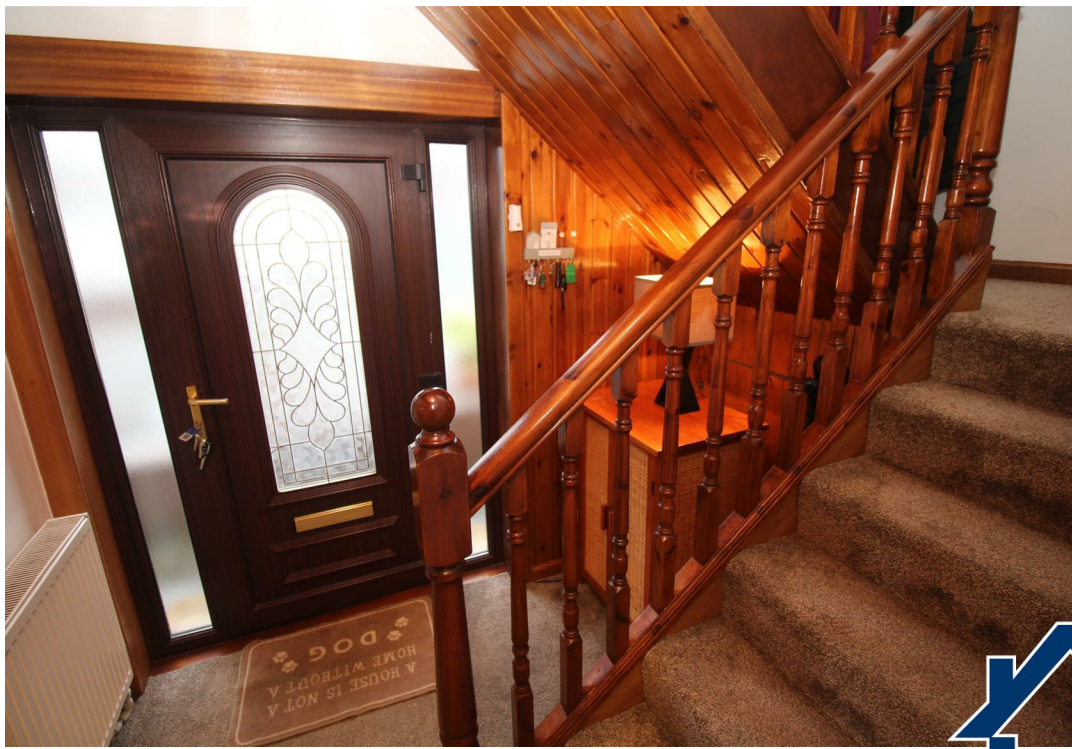


Floorplans are indicative only - not to scale
Produced by Plushplans 











Agents Notes:

These sales particulars are set out as a general outline only, issued in good faith, but do not constitute representations of fact and do not form part of any offer or contract. Any services, equipment, appliances, fittings or central heating systems have not been tested and no warranty is given or implied that these are in working order. All measurements are approximate and for guidance only.

Neither Neill Clerk Estate Agents nor any of its employees or agents has any authority to make or give any representation or warranty whatever in relation to this property.

The
next
step..



To view call 01475 888400. Speak to us 7 days a week until 11pm every day to book your viewing appointment.

House to sell or rent?

Call 01475 888400 to book your free market appraisal.

Require a solicitor?

Ask us to supply a free legal quotation from Neill Clerk & Murray, Solicitors.
www.neillclerkmurray.co.uk

Stay fully up-to-date by following Neill Clerk on:



**60 West Blackhall Street
Greenock
Renfrewshire
PA15 1UY**

t: 01475 888400

e: sales@neillclerk.co.uk

w: www.neillclerk.co.uk



Find all our properties at: [rightmove](https://www.rightmove.co.uk) [Zoopla](https://www.zoopla.co.uk) [onTheMarket.com](https://www.onthemarket.com) [s1homes.com](https://www.s1homes.com)