



55, GLAMIS DRIVE, GREENOCK, PA16
7NA



 neillclerk
ESTATE AGENTS



Description

This stylish, well presented two bedroom UPPER QUARTER VILLA has been internally upgraded in recent years and lies within a popular location adjacent to the countryside enjoying rear views over the Coves Reservoir Local Nature Reserve continuing beyond Gourock to the River Clyde and distant Holy Loch with the hills beyond. There is a private section of rear garden with a lawned plot, plus section of lawn to the side of the property.

Specification includes: double glazing and gas central heating. Spacious loft area accessed by hatch and metal pull down ladder from the hall. The loft may offer future development potential subject to requisite permissions being granted. Lies within the popular Fancy Farm residential area convenient for local shops, schooling and transport facilities.

Apartments comprise: Entrance Vestibule leads by UPVC door with side window and two inbuilt storage cupboards. Stairs lead to the Hallway with side window and loft access. There is a bright front facing Lounge with views towards Greenock Golf Course in the distance. The refitted Kitchen overlooks the rear garden with range of quality high gloss grey units, concrete style work surfaces and matching splashback. Appliances include: stainless steel chimney extractor hood, ceramic electric hob, oven, fridge and freezer.

There are two double sized Bedrooms which both benefit from inbuilt cupboards. The refitted Shower Room with rear window features a three piece suite offering: pedestal wash hand basin, wc and shower bath with chrome style shower. Specification also includes: chrome style heated towel rail and wet wall panelling.

Inspection advised for this home with impressive rear views. EPC = C.

Measurements

Entrance Vestibule/Stair

Hallway

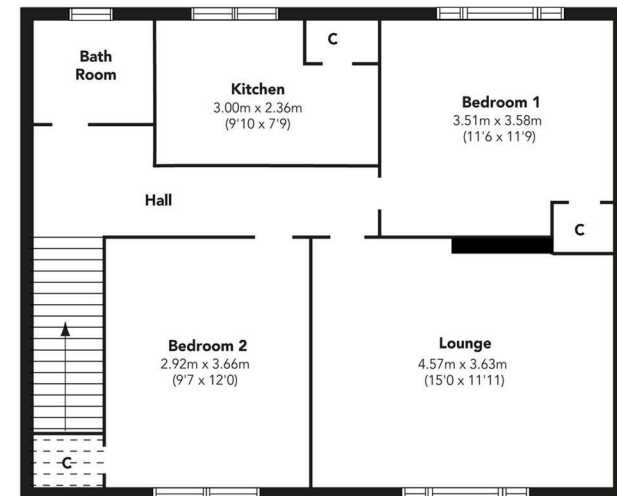
Lounge
4.57m x 3.63m (15'0 x 11'11)

Kitchen
3.00m x 2.36m (9'10 x 7'9)

Bedroom 1
3.51m x 3.58m (11'6 x 11'9)

Bedroom 2
2.92m x 3.66m (9'7 x 12'0)

Bathroom

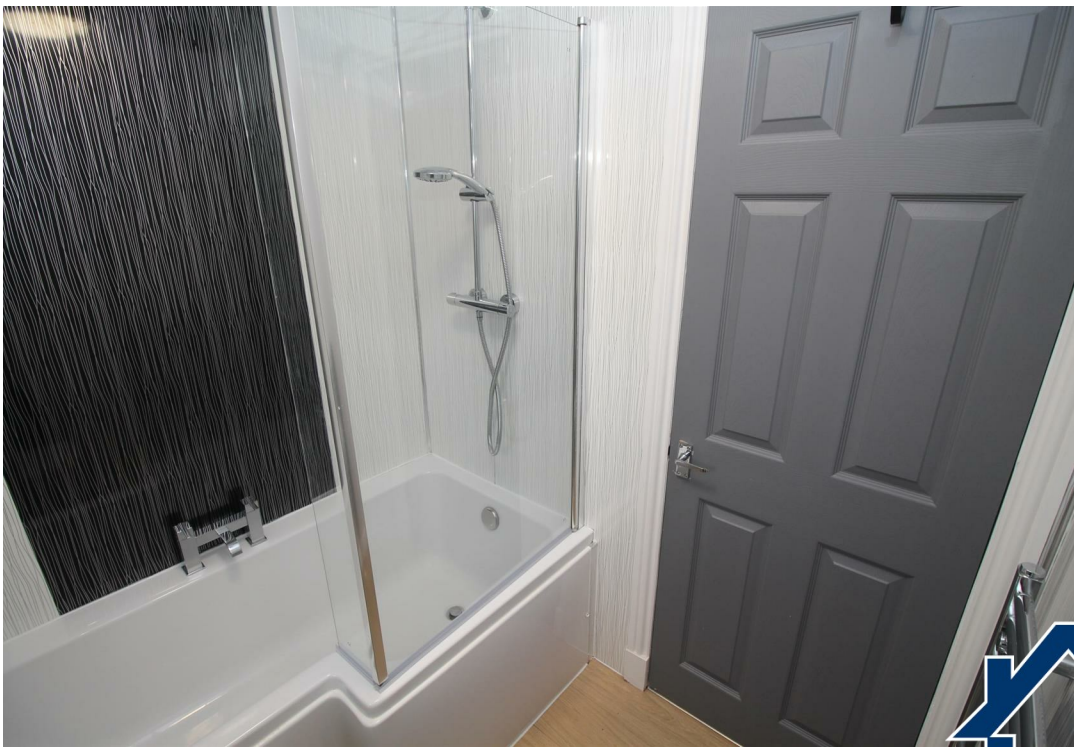


Floorplans are indicative only - not to scale
Produced by Plushplans 











The
next
step..



To view call 01475 888400. Speak to us 7 days a week until 11pm every day to book your viewing appointment.

House to sell or rent?

Call 01475 888400 to book your free market appraisal.

Require a solicitor?

Ask us to supply a free legal quotation from Neill Clerk & Murray, Solicitors.
www.neillclerkmurray.co.uk

Stay fully up-to-date by following Neill Clerk on:



**60 West Blackhall Street
Greenock
Renfrewshire
PA15 1UY**

t: 01475 888400

e: sales@neillclerk.co.uk

w: www.neillclerk.co.uk



Agents Notes:

These sales particulars are set out as a general outline only, issued in good faith, but do not constitute representations of fact and do not form part of any offer or contract. Any services, equipment, appliances, fittings or central heating systems have not been tested and no warranty is given or implied that these are in working order. All measurements are approximate and for guidance only.

Neither Neill Clerk Estate Agents nor any of its employees or agents has any authority to make or give any representation or warranty whatever in relation to this property.

Find all our properties at: [rightmove](https://www.rightmove.co.uk) [Zoopla](https://www.zoopla.co.uk) [onTheMarket.com](https://www.onthemarket.com) [s1homes.com](https://www.s1homes.com)