



11E, MARGARET
STREET, GREENOCK, PA16 8AS





Description

Occupying a prime West End location just moments from the Esplanade and the waterfront this internally upgraded, bright two bedroom, two public room SECOND FLOOR FLAT offers stylish living. A particular feature is the spacious dual aspect and open plan lounge/dining room which is a perfect space for relaxing and/or entertaining with family/friends. The front facing balcony is reached from the lounge with side views towards the Esplanade. Lies convenient for local amenities, the town centre and transport facilities. There is a shared rear drying green/garden.

Specification includes: double glazing and gas central heating. Both the quality kitchen and bathroom have been upgraded by the current owners since 2021.

Impressive accommodation comprises: Entrance Hallway by timber door with side window and two inbuilt cupboards. There is a generous sized Lounge with recess for TV and recessed electric fire. The Dining Room is on open plan with rear window formation. The upgraded Kitchen features a rear window, plus a range of white high gloss units, grey/black marble style work surfaces and splashback tiling. Appliances include: chimney extractor hood, electric ceramic hob, oven and integrated fridge/freezer.

There are two double sized Bedrooms. The 1st bedroom features a bank of fitted wardrobes. There is a quality refitted Bathroom with rear window, vanity wash hand basin set within white high gloss unit, wc and bath with chrome style shower. Additional features include: wall and floor tiling, chrome style heated towel rail and decorative panelled ceiling with downlighters.

This flat was formerly a three bedroom home prior to creation of the dining room and this layout could be reinstated by a future owner if they required an additional bedroom. Immediate viewing is advised for this well presented home. EPC = C

Measurements

Hallway

Lounge
3.86m x 4.60m (12'8 x 15'1)

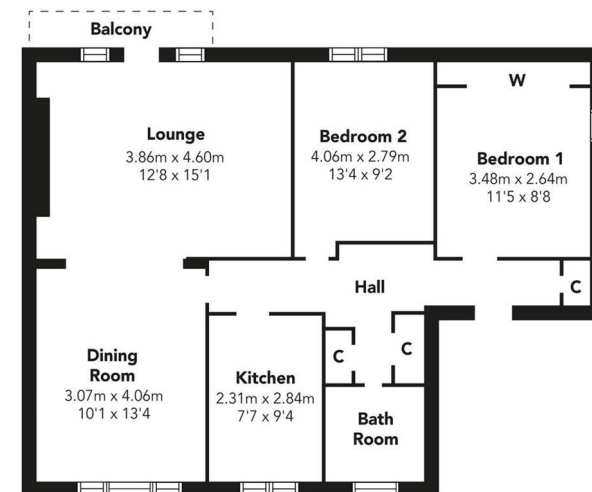
Dining Room
3.07m x 4.06m (10'1 x 13'4)

Kitchen
2.31m x 2.84m (7'7 x 9'4)

Bedroom 1
3.48m x 2.64m (11'5 x 8'8)

Bedroom 2
4.06m x 2.79m (13'4 x 9'2)

Bathroom



Floorplans are indicative only - not to scale
Produced by Plushplans 











The
next
step..



To view call 01475 888400. Speak to us 7 days a week until 11pm every day to book your viewing appointment.

House to sell or rent?

Call 01475 888400 to book your free market appraisal.

Require a solicitor?

Ask us to supply a free legal quotation from Neill Clerk & Murray, Solicitors.
www.neillclerkmurray.co.uk

Stay fully up-to-date by following Neill Clerk on:



**60 West Blackhall Street
Greenock
Renfrewshire
PA15 1UY**

t: 01475 888400

e: sales@neillclerk.co.uk

w: www.neillclerk.co.uk



Agents Notes:

These sales particulars are set out as a general outline only, issued in good faith, but do not constitute representations of fact and do not form part of any offer or contract. Any services, equipment, appliances, fittings or central heating systems have not been tested and no warranty is given or implied that these are in working order. All measurements are approximate and for guidance only.

Neither Neill Clerk Estate Agents nor any of its employees or agents has any authority to make or give any representation or warranty whatever in relation to this property.