



1L, 9, ASHBURN GARDENS, , PA19 1BT



 neillclerk
ESTATE AGENTS





Description

Immaculately presented unfurnished two bedroom FIRST FLOOR FLAT commands impressive views towards the Promenade and River Clyde which continue to the Argyllshire hills beyond. Occupies a much admired front facing position within a cul de sac close to the waterfront.

Convenient for transport facilities. Specification includes: double glazing and gas central heating. There is a shared rear drying green.

Superb apartments comprise: welcoming spacious Entrance Hallway which also benefits from an inbuilt cupboard housing a fridge / freezer. The airy front facing Lounge features a two light window enjoying impressive views to the River Clyde.

There is a fitted Kitchen with rear window, white high gloss units, marble style work surfaces and splashback tiling. Appliances include a gas cooker and washing machine.

There are two double sized Bedrooms. The 1st bedroom has fitted maple style furniture offering wardrobe and cupboard storage, plus an additional shelved cupboard. There is a Shower Room with three piece suite comprising: double sized shower cubicle, "Mira Sport" shower and pedestal wash hand basin.

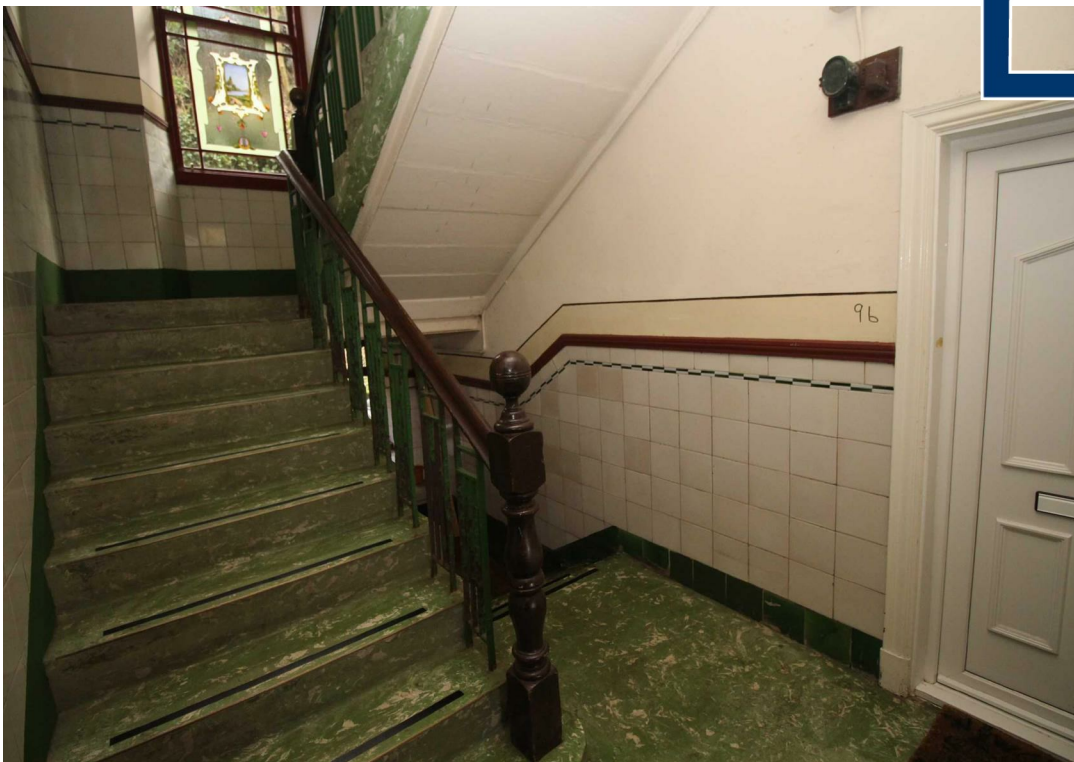
Applications are subject to financial criteria credit checks.

LLR: 220834/280/05351
LARN1901039



Measurements







The
next
step..



To view call 01475 888400. Speak to us 7 days a week until 11pm every day to book your viewing appointment.

House to sell or rent?

Call 01475 888400 to book your free market appraisal.

Require a solicitor?

Ask us to supply a free legal quotation from Neill Clerk & Murray, Solicitors.
www.neillclerkmurray.co.uk

Stay fully up-to-date by following Neill Clerk on:



**60 West Blackhall Street
Greenock
Renfrewshire
PA15 1UY**

t: 01475 888400

e: sales@neillclerk.co.uk

w: www.neillclerk.co.uk



Agents Notes:

These sales particulars are set out as a general outline only, issued in good faith, but do not constitute representations of fact and do not form part of any offer or contract. Any services, equipment, appliances, fittings or central heating systems have not been tested and no warranty is given or implied that these are in working order. All measurements are approximate and for guidance only.

Neither Neill Clerk Estate Agents nor any of its employees or agents has any authority to make or give any representation or warranty whatever in relation to this property.

Find all our properties at: [rightmove](#) [Zoopla](#) [onTheMarket.com](#) [s1homes.com](#)