



**1, SMITHSTON COTTAGES, INVERKIP
ROAD, GREENOCK, PA16 9EY**



 **neillclerk**
ESTATE AGENTS



Description

Situated within a seldom available location this traditional two bedroom plus boxroom UPPER QUARTER VILLA with private side entrance door features a private driveway offering off street parking for up to three cars. There is a small private section of lawn next to the driveway and the south facing rear garden/drying green is a communal area shared with the downstairs neighbour.

Lies close to Branchton railway station which provides a regular rail service to Glasgow which is ideal for commuters. A degree of internal upgrading/ redecoration is required which is reflected in the asking price. Specification includes: double glazing and gas central heating. Loft access by hatch from the hallway.

Accommodation comprises: Entrance Vestibule is reached by a timber door with side window and Staircase leads to the Hallway with inbuilt cupboard. The rear facing Lounge is a spacious room with archway leading to a recess which could be used a dining area. There is an electric fire and marble hearth. The Kitchen features windows to the side and rear plus a range of grey toned fitted units and granite style work surfaces.

There are two double sized Bedrooms. The 1st bedroom is a generous sized room with four light bay window formation. A Boxroom could be used as Home Office and has a window providing ventilation from the 1st bedroom. There is a rear facing Bathroom with three piece suite offering: pedestal wash hand basin, wc and bath with mixer shower plus additional "Triton" shower and partial wall tiling.

Early viewing is advised for this rare opportunity to purchase a home in this location. EPC = D

Measurements

Entrance Vestibule/Stair

Hallway

Lounge
3.81m x 5.03m (12'6 x 16'6)

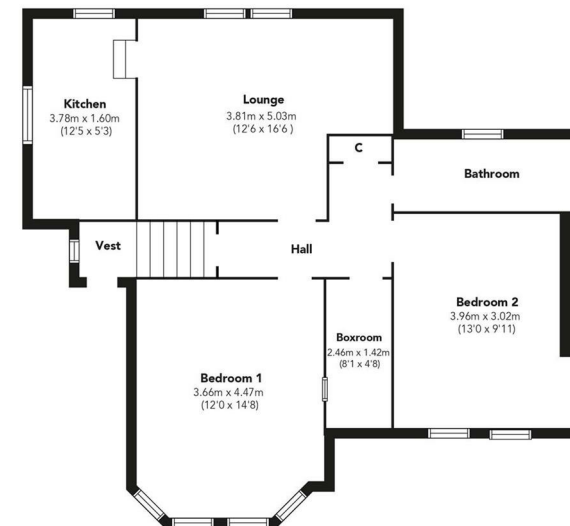
Kitchen
3.78m x 1.60m (12'5 x 5'3)

Bedroom 1
3.66m x 4.47m (12'0 x 14'8)

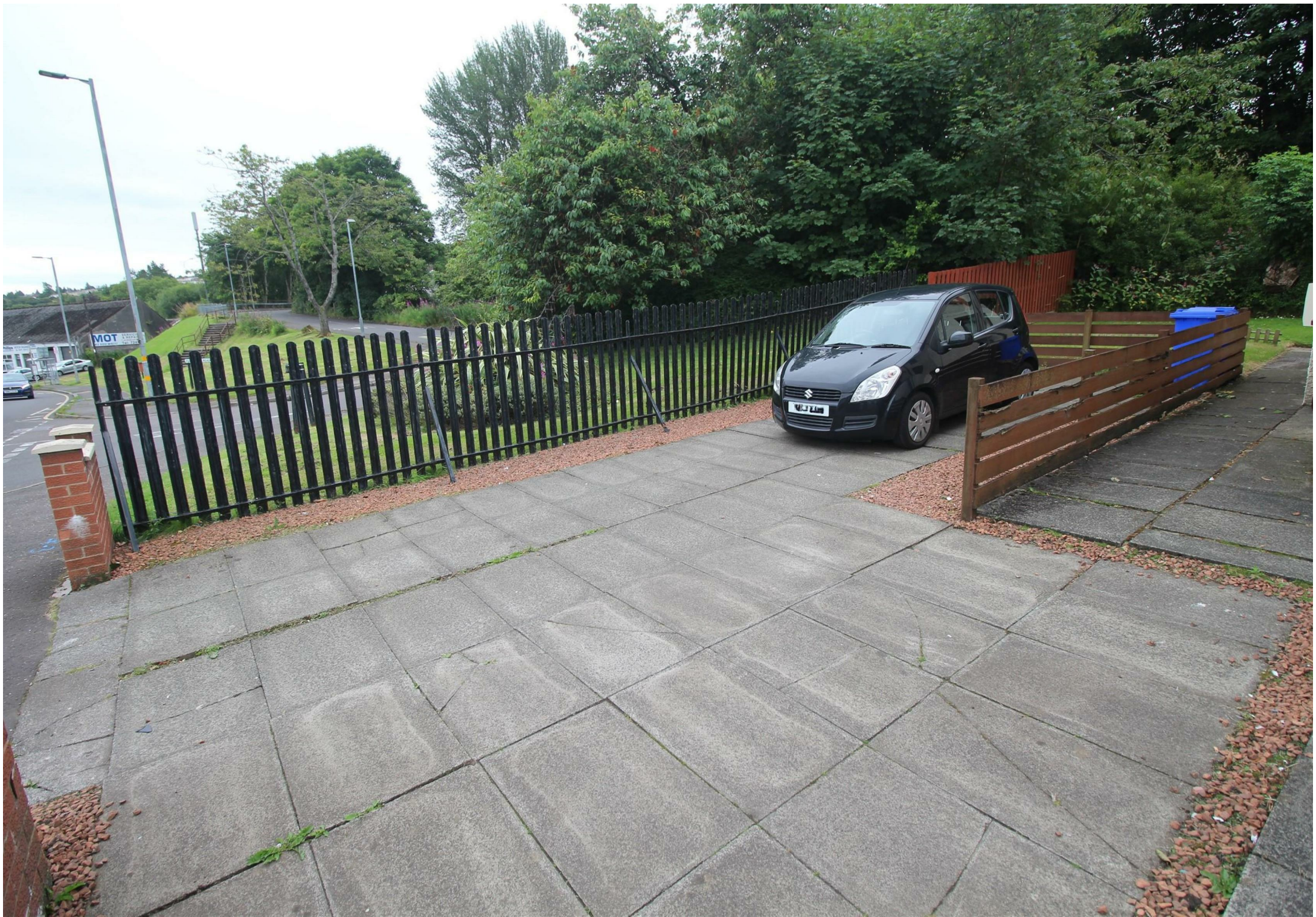
Bedroom 2
3.96m x 3.02m (13'0 x 9'11)

Boxroom
2.46m x 1.42m (8'1 x 4'8)

Bathroom



Floorplans are indicative only - not to scale
Produced by Plushplans 









The
next
step..



To view call 01475 888400. Speak to us 7 days a week until 11pm every day to book your viewing appointment.

House to sell or rent?

Call 01475 888400 to book your free market appraisal.

Require a solicitor?

Ask us to supply a free legal quotation from Neill Clerk & Murray, Solicitors.
www.neillclerkmurray.co.uk

Stay fully up-to-date by following Neill Clerk on:



**60 West Blackhall Street
Greenock
Renfrewshire
PA15 1UY**

t: 01475 888400

e: sales@neillclerk.co.uk

w: www.neillclerk.co.uk



Agents Notes:

These sales particulars are set out as a general outline only, issued in good faith, but do not constitute representations of fact and do not form part of any offer or contract. Any services, equipment, appliances, fittings or central heating systems have not been tested and no warranty is given or implied that these are in working order. All measurements are approximate and for guidance only.

Neither Neill Clerk Estate Agents nor any of its employees or agents has any authority to make or give any representation or warranty whatever in relation to this property.

Find all our properties at: [rightmove](https://www.rightmove.co.uk) [Zoopla](https://www.zoopla.co.uk) [onTheMarket.com](https://www.onthemarket.com) [s1homes.com](https://www.s1homes.com)