



76, LOMOND ROAD, WEMYSS BAY, PA18
6DP



 neillclerk
ESTATE AGENTS



Description

Offering an ideal family home this well presented and extended three bedroom DETACHED VILLA lies within a sought after residential area. Set within enclosed lawned gardens which extend to the front and rear with lawned plots, paved patio, mature shrubs and hedging. There is a long driveway offering parking for several cars which leads to the large detached garage with light and power installed plus a rear courtesy door.

Specification includes: double glazing and gas central heating. Lies a short walk from the primary school, plus local shops and transport facilities are nearby.

The family accommodation comprises: Entrance Hallway by UPVC double glazed door with side double glazed panel. The downstairs Plumbed Cloakroom features a side window, plus two piece suite, chrome style heated towel rail and inbuilt cupboard. There is a front facing Lounge which overlooks the garden on open plan with the Dining Room offering patio doors to the rear garden.

There is an extended fitted Kitchen with side and rear windows plus UPVC double glazed door leading to the garden. There are beech style fitted units, marble effect work surfaces and splashback tiling. Integrated appliances include: extractor hood, five ring gas hob, oven, warming drawer, washing machine, dishwasher, tumble dryer, microwave, fridge and freezer.

Stairs lead to the Upper Landing with side window, two inbuilt cupboards and hatch to the loft. There are two double sized Bedrooms both with fitted wardrobes and 3rd single Bedroom with cupboard. The Bathroom with rear window has a quality suite comprising: vanity wash hand basin, wc and shower bath with chrome style shower. Additional benefits include: wall / floor tiling, decorative panelled ceiling and chrome style heated towel rail.

Early viewing is highly recommended for this impressive family home. EPC = D

Measurements

Hallway

Plumbed Cloakroom

Lounge / Dining Room
3.61m x 7.59m (11'10 x 24'11)

Kitchen
3.02m x 5.26m (9'11 x 17'3)

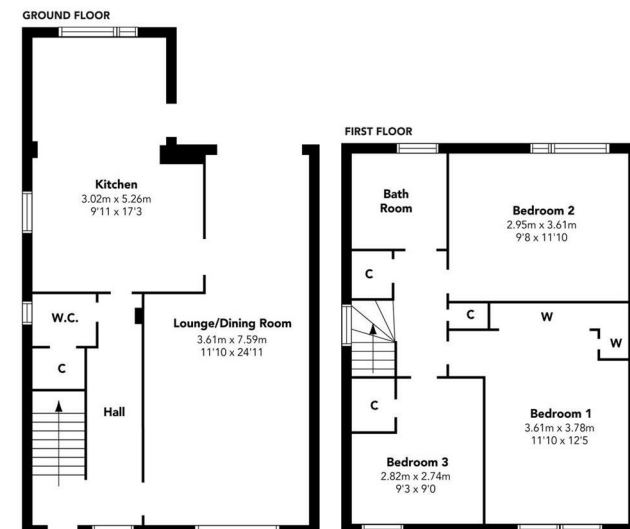
Upper Landing

Bedroom 1
3.61m x 3.78m (11'10 x 12'5)

Bedroom 2
2.95m x 3.61m (9'8 x 11'10)

Bedroom 3
2.82m x 2.74m (9'3 x 9'0)

Bathroom



Floorplans are indicative only - not to scale
Produced by Plushplans











The next step..



To view call 01475 888400. Speak to us 7 days a week until 11pm every day to book your viewing appointment.

House to sell or rent?

Call 01475 888400 to book your free market appraisal.

Require a solicitor?

Ask us to supply a free legal quotation from Neill Clerk & Murray, Solicitors.

www.neillclerkmurray.co.uk

Stay fully up-to-date by following Neill Clerk on:



**60 West Blackhall Street
Greenock
Renfrewshire
PA15 1UY**

t: 01475 888400

e: sales@neillclerk.co.uk

w: www.neillclerk.co.uk



Agents Notes:

These sales particulars are set out as a general outline only, issued in good faith, but do not constitute representations of fact and do not form part of any offer or contract. Any services, equipment, appliances, fittings or central heating systems have not been tested and no warranty is given or implied that these are in working order. All measurements are approximate and for guidance only.

Neither Neill Clerk Estate Agents nor any of its employees or agents has any authority to make or give any representation or warranty whatever in relation to this property.