



3/1, 121, FINNART  
STREET, GREENOCK, PA16 8HT



neillclerk  
ESTATE AGENTS





## Description

Set within a distinctive red sandstone property this particularly generous sized three bedroom TOP FLOOR FLAT is set within a desirable tree lined West End street. The flat features enviable panoramic views over Greenock's West End towards the River Clyde spanning from the Rosneath Peninsula to Helensburgh and continuing to Dumbarton Rock.

Specification includes: double glazing, gas central heating and the building is protected by a security door entry system. This home also features a plumbed cloakroom and utility room. There is a communal rear drying green with outbuilding which includes a private store. Attractive communal entrance stair with glass windows with painted scenes and feature wall tiling.

The impressive family accommodation comprises: Entrance Vestibule which is reached by timber door which in turn leads by a single glazed patterned door to the spacious Reception Hallway with ornate cornice, ceiling rose and there are two useful storage cupboards. The Plumbed Cloakroom offers a two piece suite comprising: semi pedestal wash hand basin and wc. There is an airy, generous sized front facing bay windowed Lounge with ornate detailing and fireplace with inset electric fire. The Dining Kitchen has a rear window, plus modern fitted units, beech style work surfaces and splashback tiling. Appliances include: stainless steel extractor hood, electric ceramic hob, oven, dishwasher and integrated fridge/freezer. The Utility Room offers matching fitted units plus a washing machine and tumble dryer.

There are three double sized Bedrooms. The front facing 1st bedroom features a walk in wardrobe. The Bathroom with rear window features a three piece suite comprising: pedestal wash hand basin, wc and bath with chrome shower. There is partial wall tiling and the ceiling features downlighters.

Immediate viewing is essential for this spacious West End home. EPC = D.

## Measurements

Entrance Vestibule

Reception Hallway

Plumbed Cloakroom

Lounge

4.17m x 5.77m (13'8 x 18'11)

Dining Kitchen

3.25m x 4.42m (10'8 x 14'6)

Utility Room

1.17m x 1.83m (3'10 x 6'0)

Bedroom 1

3.71m x 4.90m (12'2 x 16'1)

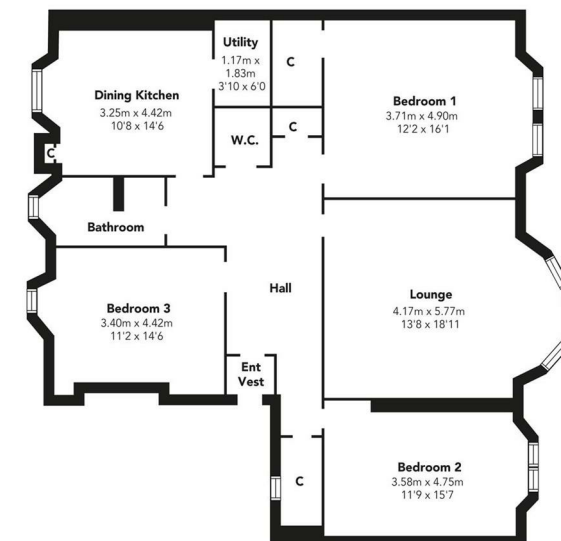
Bedroom 2

3.58m x 4.75m (11'9 x 15'7)

Bedroom 3

3.40m x 4.42m (11'2 x 14'6)

Bathroom



Floorplans are indicative only - not to scale  
Produced by Plushplans 



















The next step..



To view call 01475 888400. Speak to us 7 days a week until 11pm every day to book your viewing appointment.

**House to sell or rent?**

Call 01475 888400 to book your free market appraisal.

**Require a solicitor?**

Ask us to supply a free legal quotation from Neill Clerk & Murray, Solicitors.  
[www.neillclerkmurray.co.uk](http://www.neillclerkmurray.co.uk)

Stay fully up-to-date by following Neill Clerk on:



**60 West Blackhall Street  
Greenock  
Renfrewshire  
PA15 1UY**

**t: 01475 888400**

**e: [sales@neillclerk.co.uk](mailto:sales@neillclerk.co.uk)**

**w: [www.neillclerk.co.uk](http://www.neillclerk.co.uk)**



**Agents Notes:**

These sales particulars are set out as a general outline only, issued in good faith, but do not constitute representations of fact and do not form part of any offer or contract. Any services, equipment, appliances, fittings or central heating systems have not been tested and no warranty is given or implied that these are in working order. All measurements are approximate and for guidance only.

Neither Neill Clerk Estate Agents nor any of its employees or agents has any authority to make or give any representation or warranty whatever in relation to this property.