



173, SOUTH STREET, GREENOCK, PA16  
8TE







## Description

Set within a desirable West End location this four bedroom SEMI DETACHED BUNGALOW features a south facing rear garden which backs onto Greenock Golf Course. The family accommodation is set over two levels. There is a garage with remote control electric door and monoblock driveway offering parking for two to three cars. The front garden is lawned with mature shrubs.

A degree of modernisation and upgrading is required which is reflected in the asking price.

Specification includes: double glazing and gas warm air central heating. There are impressive views over the West End of Greenock to the River Clyde with the hills beyond.

Family accommodation comprises: Entrance Vestibule by single glazed double doors. The Hallway is reached by a double glazed door with two storage cupboards. There is a bright front facing Lounge with three light bay window and tiled fireplace. The rear facing Dining Room has a gas three radiant fire.

The Kitchen is reached from the dining room and has a side window plus basic fitted units. The Rear Porch leads to the garden and has cupboard housing the boiler.

There are two downstairs double sized Bedrooms. There is a downstairs Bathroom with side window and three piece suite comprising: pedestal wash hand basin, wc and bath with mixer shower.

Stairs leads to the Upper Landing. There are two further double sized Bedrooms. The Shower Room offers a three piece suite comprising: wash hand basin, wc and shower cubicle with "Mira" shower.

Viewing is highly recommended for this property which will offer a fine family home on completion of the upgrading works. EPC = F

## Measurements

Entrance Vestibule

Hallway

Lounge

3.91m x 4.45m (12'10" x 14'7")

Dining Room

3.76m x 3.68m (12'4" x 12'1")

Kitchen

3.48m x 2.08m (11'5" x 6'10")

Rear Porch

Bedroom 1

3.28m x 3.96m (10'9" x 13'0")

Bedroom 2

2.69m x 3.71m (8'10" x 12'2")

Bathroom

Upper Landing

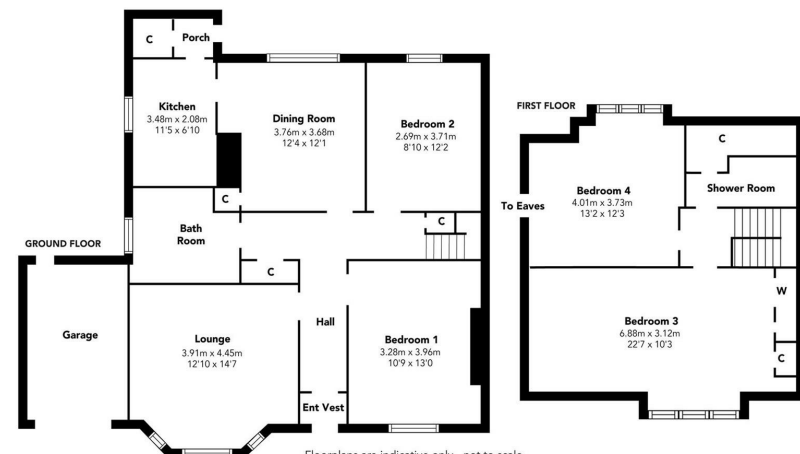
Bedroom 3

6.88m x 3.12m (22'7" x 10'3")

Bedroom 4

4.01m x 3.73m (13'2" x 12'3")

Shower Room



Floorplans are indicative only - not to scale  
Produced by Plushplans





















The  
next  
step..



To view call 01475 888400. Speak to us 7 days a week until 11pm every day to book your viewing appointment.

**House to sell or rent?**

Call 01475 888400 to book your free market appraisal.

**Require a solicitor?**

Ask us to supply a free legal quotation from Neill Clerk & Murray, Solicitors.  
[www.neillclerkmurray.co.uk](http://www.neillclerkmurray.co.uk)

Stay fully up-to-date by following Neill Clerk on:



**60 West Blackhall Street  
Greenock  
Renfrewshire  
PA15 1UY**

**t: 01475 888400**

**e: [sales@neillclerk.co.uk](mailto:sales@neillclerk.co.uk)**

**w: [www.neillclerk.co.uk](http://www.neillclerk.co.uk)**



**Agents Notes:**

These sales particulars are set out as a general outline only, issued in good faith, but do not constitute representations of fact and do not form part of any offer or contract. Any services, equipment, appliances, fittings or central heating systems have not been tested and no warranty is given or implied that these are in working order. All measurements are approximate and for guidance only.

Neither Neill Clerk Estate Agents nor any of its employees or agents has any authority to make or give any representation or warranty whatever in relation to this property.