



6, NEWTON ROAD, BISHOPTON, PA7 5JP



 neillclerk
ESTATE AGENTS



Description

Set within a sought after residential cul de sac location this three bedroom SEMI DETACHED VILLA requires extensive upgrading and modernisation which is reflected in the asking price. Upon completion of the upgrading works this property will offer an ideal family home. Would ideally suit a developer or DIY enthusiast. Lies convenient for the centre of Bishopton with all its amenities and local shops. The railway station offers a frequent service to Glasgow and the M8 is easily reached which is convenient for commuters.

There are lawned gardens to the front and rear. The rear garden also features three sheds. A pebbled/paved driveway provides off street parking for three cars. Specification includes: double glazing and gas central heating.

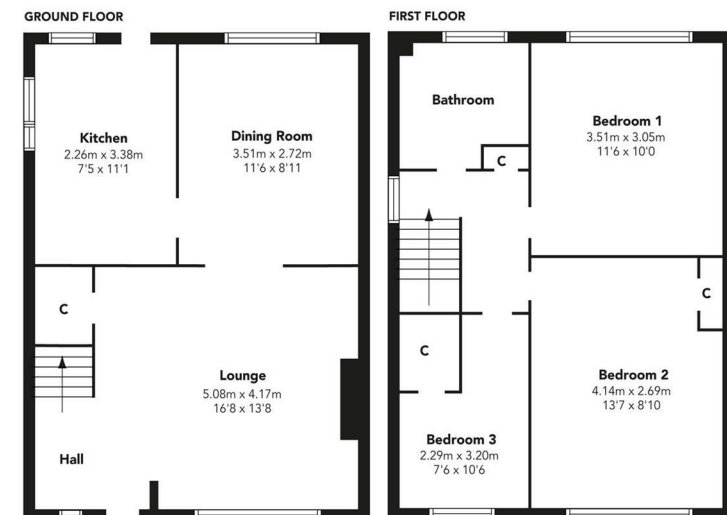
Accommodation comprises: Entrance Hall by UPVC double glazed door with side panel and is open plan to the front facing Lounge which has a fireplace and gas fire, plus an understair cupboard. The lounge in turn is on semi open plan with the Dining Room which overlooks the rear garden and gives access to the kitchen. The Kitchen features side and rear windows, UPVC door which leads to the garden and basic fitted units.

Stairs lead to the Upper Landing with side window, hatch to the loft and shelved cupboard. There are two double sized Bedrooms (one has an inbuilt cupboard) and 3rd single Bedroom with storage recess. The Bathroom has a basic three piece suite comprising: pedestal wash hand basin, wc and bath with Gainsborough shower.

Viewing is highly recommended for this opportunity to upgrade a three bedroom family home in this rarely available location. EPC = D

Measurements

Hallway
Lounge
5.08m x 4.17m (16'8 x 13'8)
Dining Room
3.51m x 2.72m (11'6 x 8'11)
Kitchen
2.26m x 3.38m (7'5 x 11'1)
Upper Landing
Bedroom 1
3.51m x 3.05m (11'6 x 10'0)
Bedroom 2
4.14m x 2.69m (13'7 x 8'10)
Bedroom 3
2.29m x 3.20m (7'6 x 10'6)
Bathroom



Floorplans are indicative only - not to scale
Produced by Plushplans 











The
next
step..



To view call 01475 888400. Speak to us 7 days a week until 11pm every day to book your viewing appointment.

House to sell or rent?

Call 01475 888400 to book your free market appraisal.

Require a solicitor?

Ask us to supply a free legal quotation from Neill Clerk & Murray, Solicitors.
www.neillclerkmurray.co.uk

Stay fully up-to-date by following Neill Clerk on:



**60 West Blackhall Street
Greenock
Renfrewshire
PA15 1UY**

t: 01475 888400

e: sales@neillclerk.co.uk

w: www.neillclerk.co.uk



Agents Notes:

These sales particulars are set out as a general outline only, issued in good faith, but do not constitute representations of fact and do not form part of any offer or contract. Any services, equipment, appliances, fittings or central heating systems have not been tested and no warranty is given or implied that these are in working order. All measurements are approximate and for guidance only.

Neither Neill Clerk Estate Agents nor any of its employees or agents has any authority to make or give any representation or warranty whatever in relation to this property.

Find all our properties at: [rightmove](https://www.rightmove.co.uk) [Zoopla](https://www.zoopla.co.uk) [onTheMarket.com](https://www.onthemarket.com) [s1homes.com](https://www.s1homes.com)