



**FLAT 4, WHITEHILL HOUSE, 79, OCTAVIA
TERRACE, GREENOCK, PA16 7PX**





Description

Enjoying a highly sought after location within one of the West End's most desirable addresses this rarely available three bedroom FIRST FLOOR FLAT offers a bright spacious home. The property lies within well maintained communal gardens.

There is a private garage remote control electric door with light and power installed, plus further allocated resident's parking. Communal plumbed wash room on the ground floor. Specification includes: double glazing, gas central heating and security door entry system.

The flat benefits from dual aspect partial views towards the River Clyde and the Lyle Hill. Ideal for a sports enthusiast given its proximity to the Greenock Wanderers playing fields, Fort Matilda bowls and tennis club plus the Battery Park at the waterfront. The property lies just a few minutes walk from Fort Matilda railway station which offers a regular service to Glasgow perfect for commuters.

Apartments comprise: welcoming Entrance Hallway is reached by single glazed timber door with three inbuilt cupboards. The dual aspect spacious bright Lounge / Dining Room has windows to the front and rear. The fireplace features an inset electric fire. There is ample space for a dining table and chairs within this apartment which is an excellent room for entertaining.

The rear facing Kitchen offers grey toned units, white work surfaces and splashback tiling. Appliances include: extractor hood, gas cooker, washing machine, dishwasher and fridge/freezer.

There are three double sized Bedrooms. The 1st and 2nd bedrooms both benefit from fitted wardrobes. The Shower Room with rear window features a pedestal wash hand basin wc and double sized shower cubicle with chrome style shower. Specification also includes: tiling/wet wall panelling and chrome style heated towel rail.

Furniture is open to separate negotiation. Viewing is highly recommended for this three bedroom West End home. EPC = C

Measurements

Hallway

Lounge/Dining Room
3.94m x 8.86m (12'11 x 29'1)

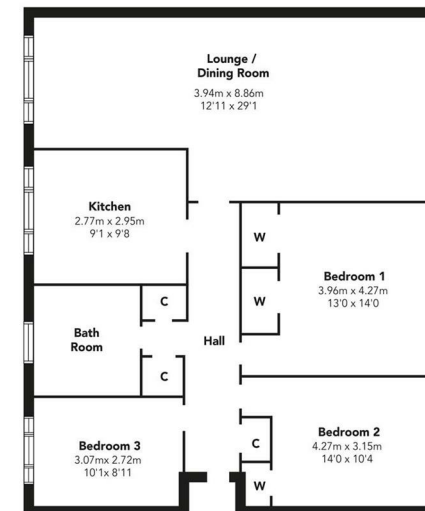
Kitchen
2.77m x 2.95m (9'1 x 9'8)

Bedroom 1
3.96m x 4.27m (13'0 x 14'0)

Bedroom 2
4.27m x 3.15m (14'0 x 10'4)

Bedroom 3
3.07m x 2.72m (10'1 x 8'11)

Bathroom



Floorplans are indicative only - not to scale
Produced by Plushplans 











The next step..



To view call 01475 888400. Speak to us 7 days a week until 11pm every day to book your viewing appointment.

House to sell or rent?

Call 01475 888400 to book your free market appraisal.

Require a solicitor?

Ask us to supply a free legal quotation from Neill Clerk & Murray, Solicitors.
www.neillclerkmurray.co.uk

Stay fully up-to-date by following Neill Clerk on:



**60 West Blackhall Street
Greenock
Renfrewshire
PA15 1UY**

t: 01475 888400

e: sales@neillclerk.co.uk

w: www.neillclerk.co.uk



Agents Notes:

These sales particulars are set out as a general outline only, issued in good faith, but do not constitute representations of fact and do not form part of any offer or contract. Any services, equipment, appliances, fittings or central heating systems have not been tested and no warranty is given or implied that these are in working order. All measurements are approximate and for guidance only.

Neither Neill Clerk Estate Agents nor any of its employees or agents has any authority to make or give any representation or warranty whatever in relation to this property.