



4, LARCH WALK, WEMYSS BAY, PA18 6BJ





Description

Occupying a rarely available off street setting this three bedroom DETACHED VILLA offers an ideal family home within a sought after location. Gardens extend to the front and rear. The front garden features a pebbled section and lawned plot. The enclosed rear garden offers two paved patio areas, lawn, borders with shrubs/plants and shed. There is a garage located in cul de sac reached from Katrine Road which is just a short walk from the property.

Specification includes: double glazing and gas central heating. Lies convenient for the primary school and local amenities. Wemyss Bay railway station offers a regular service to Glasgow which is ideal for commuters.

Family apartments comprise: Entrance Porch by UPVC double glazed door with windows to front, side and rear. A further single glazed door leads to the Hallway with inbuilt cupboard. The front facing Lounge features a marble fireplace and timber panelled flooring.

There is a rear facing Dining Kitchen with double glazed door leading to the rear garden and two rear windows. There are limed oak style units, timber work surfaces and splashback tiling. Appliances include: gas cooker, washing machine, tumble dryer and dishwasher. There is ample space for a dining table and chairs within this room.

The 1st double sized Bedroom is located on the ground floor and benefits from a bank of fitted mirrored wardrobes. The downstairs Bathroom with rear window offers a four piece suite comprising: pedestal wash hand basin, wc, bath with mixer shower and shower cubicle. There is a wall tiling.

Stairs lead to the Upper Landing with inbuilt cupboard and hatch to the loft. There are two further double sized Bedrooms with wardrobe and cupboard storage. The 2nd bedroom benefits from an Ensuite WC compartment with vanity wash hand basin and wc.

Viewing is advised for this detached family home. EPC = D.

Measurements

Entrance Porch

Hallway

Lounge

3.61m x 4.70m (11'10 x 15'5)

Dining Kitchen

5.23m x 3.84m (17'2 x 12'7)

Bedroom 1

3.66m x 3.63m (12'0 x 11'11)

Bathroom

Upper Landing

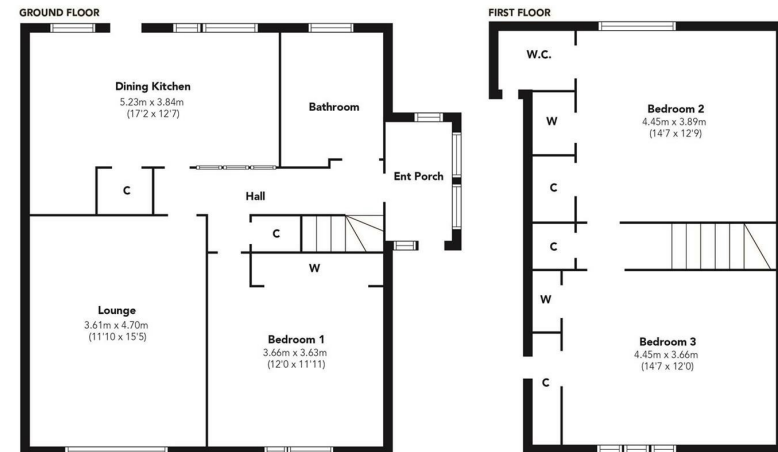
Bedroom 2

4.45m x 3.89m (14'7 x 12'9)

WC Compartment

Bedroom 3

4.45m x 3.66m (14'7 x 12'0)



Floorplans are indicative only - not to scale
Produced by Plushplans











The
next
step..



To view call 01475 888400. Speak to us 7 days a week until 11pm every day to book your viewing appointment.

House to sell or rent?

Call 01475 888400 to book your free market appraisal.

Require a solicitor?

Ask us to supply a free legal quotation from Neill Clerk & Murray, Solicitors.
www.neillclerkmurray.co.uk

Stay fully up-to-date by following Neill Clerk on:



**60 West Blackhall Street
Greenock
Renfrewshire
PA15 1UY**

t: 01475 888400

e: sales@neillclerk.co.uk

w: www.neillclerk.co.uk



Agents Notes:

These sales particulars are set out as a general outline only, issued in good faith, but do not constitute representations of fact and do not form part of any offer or contract. Any services, equipment, appliances, fittings or central heating systems have not been tested and no warranty is given or implied that these are in working order. All measurements are approximate and for guidance only.

Neither Neill Clerk Estate Agents nor any of its employees or agents has any authority to make or give any representation or warranty whatever in relation to this property.