



**7, AUCHNEAGH  
GROVE, GREENOCK, PA16 9AT**



 **neillclerk**  
ESTATE AGENTS



## Description

Offering stylish family living this immaculately presented three bedroom SEMI DETACHED VILLA is situated within a sought after development which was completed around three years ago. The beautiful home features an enclosed south facing landscaped rear garden with balcony area, paved patio and artificial grass plot which is a perfect space for relaxing with family and friends on summer days. There is a monoblock driveway providing off street parking for two cars. The front garden features a lawned plot.

Specification includes: double glazing, gas central heating and laminate flooring. Remainder of NHBC guarantee. Enjoys a cul de sac setting.

Highly impressive pristine apartments comprise: Entrance Hallway by UPVC double glazed door. The WC Compartment with front window offers a quality two piece suite. The front facing Lounge is on open plan with the stunning Dining Kitchen. This room features windows overlooking the garden and French doors leading to the balcony. There a quality grey and white toned high gloss units and concrete effect work surfaces. Appliances include: stainless steel chimney extractor hood, gas hob, electric oven, integrated fridge/freezer and washing machine. There is ample space for a table and chairs within the dining area which is ideal for family living.

Stairs lead to the Upper Landing with inbuilt cupboard and hatch to the loft. The Master Bedroom benefits from fitted mirrored wardrobes. An Ensuite Shower Room features a side window, plus three piece suite including: semi pedestal wash hand basin, wc and double sized shower cubicle with "Mira" shower. Specification also includes: wall and floor tiling. There are two further double sized Bedrooms. The Bathroom offers a three piece suite comprising: semi pedestal wash hand basin, wc and bath. Additional benefits include: wall and floor tiling.

This highly impressive family home must be viewed. EPC = B

## Measurements

Entrance Hall

WC Compartment

Lounge

4.06m x 4.60m (13'4 x 15'1)

Dining Kitchen

3.28m x 5.05m (10'9 x 16'7)

Upper Landing

Bedroom 1

2.95m x 3.02m (9'8 x 9'11)

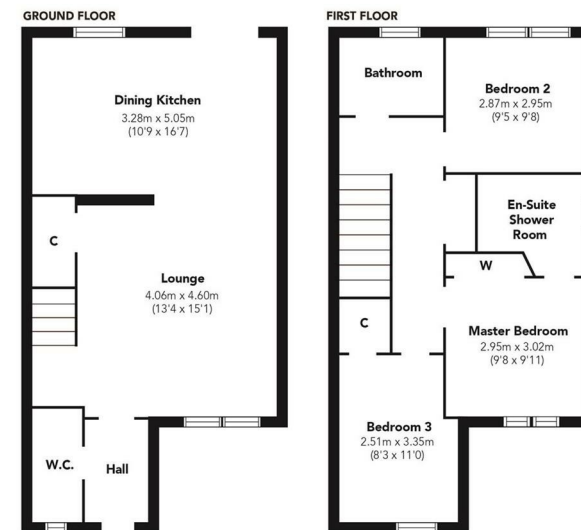
Bedroom 2

2.87m x 2.95m (9'5 x 9'8)

Bedroom 3

2.51m x 3.35m (8'3 x 11'0)

Bathroom

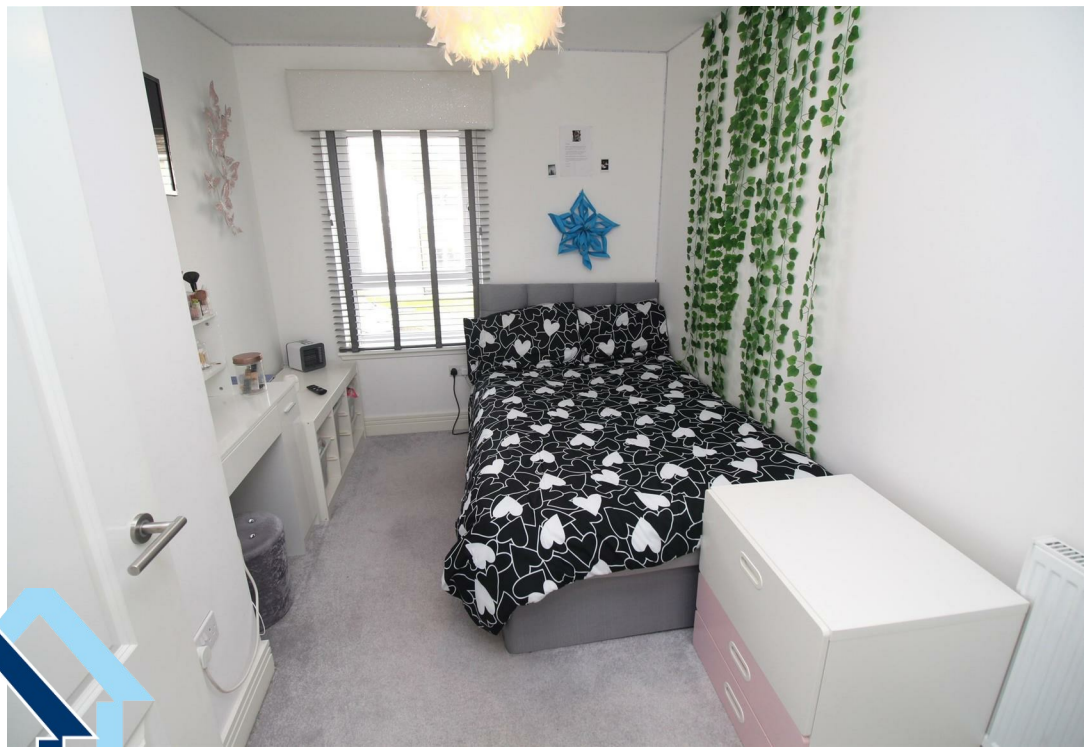


Floorplans are indicative only - not to scale  
Produced by Plushplans 











The  
next  
step..



To view call 01475 888400. Speak to us 7 days a week until 11pm every day to book your viewing appointment.

**House to sell or rent?**

Call 01475 888400 to book your free market appraisal.

**Require a solicitor?**

Ask us to supply a free legal quotation from Neill Clerk & Murray, Solicitors.  
[www.neillclerkmurray.co.uk](http://www.neillclerkmurray.co.uk)

Stay fully up-to-date by following Neill Clerk on:



**60 West Blackhall Street  
Greenock  
Renfrewshire  
PA15 1UY**

**t: 01475 888400**

**e: [sales@neillclerk.co.uk](mailto:sales@neillclerk.co.uk)**

**w: [www.neillclerk.co.uk](http://www.neillclerk.co.uk)**



**Agents Notes:**

These sales particulars are set out as a general outline only, issued in good faith, but do not constitute representations of fact and do not form part of any offer or contract. Any services, equipment, appliances, fittings or central heating systems have not been tested and no warranty is given or implied that these are in working order. All measurements are approximate and for guidance only.

Neither Neill Clerk Estate Agents nor any of its employees or agents has any authority to make or give any representation or warranty whatever in relation to this property.