



32, NEWARK STREET, GREENOCK, PA16
7UN





Description

Offering an elegant, immaculately presented home within a prime West End location this truly impressive substantial five bedroom UPPER CONVERSION offers flexible living formed over two levels plus there is a further external garden room. This character filled family home features traditional period style ornate detailing including: cornicing & ceiling roses. All rear facing rooms offer views over the West End to the River Clyde and hills beyond. Specification includes: double glazing, gas central heating.

Set back from Newark Street and accessed by pebbled driveway. A 1/3 of both the driveway and front garden are private to the property. A particularly spacious private enclosed rear garden features an extensive lawn and two paved patio areas. The double glazed garden room is a perfect space for relaxing and also entertaining with friends & family on summer days/evenings spent outside. A useful store and greenhouse are also included.

Entry to the home is by a welcoming, bright Sun Room/Porch with refurbished windows and tiled floor. The Reception Hallway offers two cupboards. A refitted Plumbed Cloakroom features a luxury 2 piece suite. There is a spacious rear facing bay windowed Lounge with tiled fireplace. Both the Dining Room and separate Family Room overlook the rear garden. The Kitchen Diner is perfect for family living with fitted oak style units and gas cooker. The fitted Utility Room is accessed from the kitchen.

The bay windowed Master Bedroom features quality Ensuite Shower Room with 4 piece suite. A Home Office/Bedroom 5 completes the accommodation on this floor.

Staircase leads to the Upper Landing with inbuilt cupboard. There are three further generous sized, bright double Bedrooms on this level with "Velux" windows. The luxury refitted Bathroom offers a quality 4 piece suite including: free standing bath, double sized shower cubicle, wc and semi pedestal wash hand basin.

Viewing is essential for this fine home. EPC = C

Measurements

Porch/Sun Room
3.05m x 2.82m (10'0 x 9'3)

Reception Hallway / Plumbed Cloakroom

Lounge
4.70m x 6.10m (15'5 x 20'0)

Dining Room
2.46m x 4.93m (8'1 x 16'2)

Family Room
4.24m x 4.27m (13'11 x 14'0)

Dining Kitchen
3.91m x 4.39m (12'10 x 14'5)

Utility Room
3.02m x 2.51m (9'11 x 8'3)

Master Bedroom
4.52m x 5.51m (14'10 x 18'1)

Ensuite Shower Room

Home Office / Bedroom 5
2.46m x 3.45m (8'1 x 11'4)

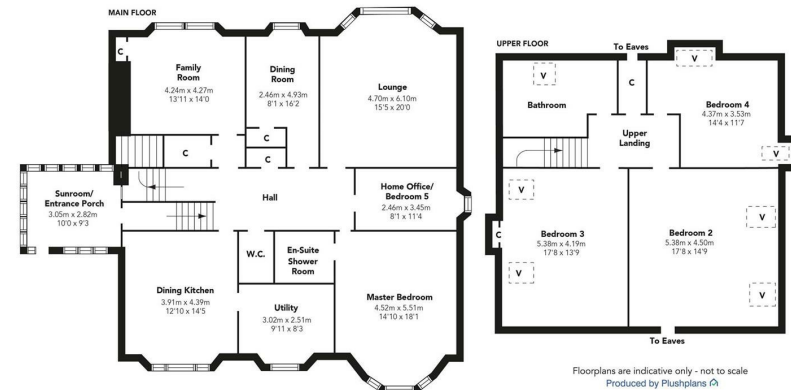
Bedroom 2
5.38m x 4.50m (17'8 x 14'9)

Bedroom 3
5.38m x 4.19m (17'8 x 13'9)

Bedroom 4
4.37m x 3.53m (14'4 x 11'7)

Bathroom

Garden Room
3.51m x 3.00m (11'6 x 9'10)



Floorplans are indicative only - not to scale
Produced by Plusplans











The
next
step..



To view call 01475 888400. Speak to us 7 days a week until 11pm every day to book your viewing appointment.

House to sell or rent?

Call 01475 888400 to book your free market appraisal.

Require a solicitor?

Ask us to supply a free legal quotation from Neill Clerk & Murray, Solicitors.
www.neillclerkmurray.co.uk

Stay fully up-to-date by following Neill Clerk on:



**60 West Blackhall Street
Greenock
Renfrewshire
PA15 1UY**

t: 01475 888400

e: sales@neillclerk.co.uk

w: www.neillclerk.co.uk



Agents Notes:

These sales particulars are set out as a general outline only, issued in good faith, but do not constitute representations of fact and do not form part of any offer or contract. Any services, equipment, appliances, fittings or central heating systems have not been tested and no warranty is given or implied that these are in working order. All measurements are approximate and for guidance only.

Neither Neill Clerk Estate Agents nor any of its employees or agents has any authority to make or give any representation or warranty whatever in relation to this property.