



FLAT 1, 38 UNION STREET, GREENOCK,
PA16 8DJ



 neillclerk
ESTATE AGENTS



Description

This bright and spacious two/three bedroom FIRST FLOOR FLAT occupies a highly desirable West End location and is set within an attractive "C" listed property with only one flat per floor. Access to the flat is by a communal carpeted stairway with ornate banister and feature glazed cupola adding light and character to the entrance stair.

Specification includes: gas central heating and double glazing. There are rear views over the West End towards the River Clyde with the hills beyond. Conveniently positioned for local amenities and transport facilities. The waterfront and Esplanade are just a short walk from the property.

Apartments comprise: Reception Hallway is reached by timber door with archway and inbuilt cupboard with sliding mirrored doors. The front facing Lounge is a generous sized apartment with two windows and offers an excellent space for relaxing and entertaining. Doors lead to the Dining Room (potential 3rd bedroom) which is also front facing. There is a Dining Kitchen with side window and range of fitted units in green toned grained style finish with beech style work surfaces and splashback tiling. Appliances include: extractor hood, stainless steel gas hob, electric oven and integrated fridge/freezer. There is space for a table and chairs within this apartment ideal for families.

There are two double sized Bedrooms which are both rear facing with views over the West End towards the River Clyde. The 2nd bedroom benefits from a walk in storage cupboard. The Bathroom with side window features a four piece suite comprising: pedestal wash hand basin, wc, bath and shower cubicle with "Heatrae Sadia" shower. There is wall tiling to 3/4 height and a tiled floor.

Viewing is highly recommended for this spacious West End home. EPC = D.

Measurements

Hallway

Lounge

16'10 x 16'7 (5.13m x 5.05m)

Dining Room / 3rd Bedroom

13'2 x 12'6 (4.01m x 3.81m)

Dining Kitchen

12'4 x 13'8 (3.76m x 4.17m)

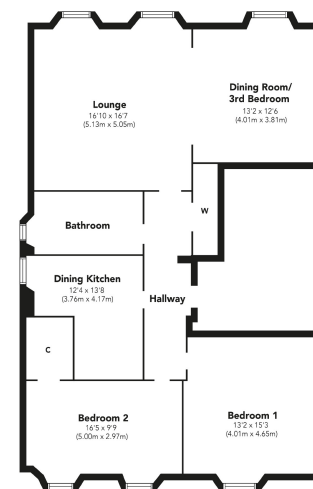
Bedroom 1

13'2 x 15'3 (4.01m x 4.65m)

Bedroom 2

16'5 x 9'9 (5.00m x 2.97m)

Bathroom



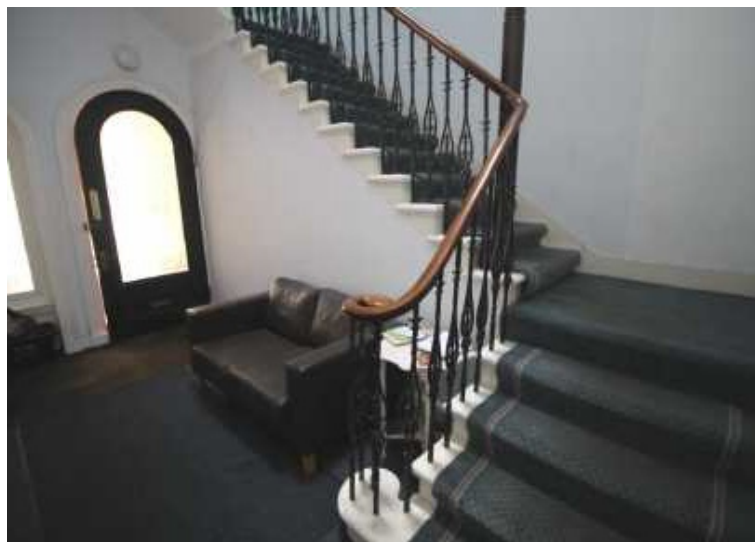
Floorplans are indicative only - not to scale
Produced by Plush Plans Ltd (A)











Agents Notes:

These sales particulars are set out as a general outline only, issued in good faith, but do not constitute representations of fact and do not form part of any offer or contract. Any services, equipment, appliances, fittings or central heating systems have not been tested and no warranty is given or implied that these are in working order. All measurements are approximate and for guidance only.

Neither Neill Clerk Estate Agents nor any of its employees or agents has any authority to make or give any representation or warranty whatever in relation to this property.

Find all our properties at: [rightmove](#) [Zoopla](#) [onTheMarket.com](#) [s1homes.com](#)

The
next
step....



To view call **01475 888400**. Speak to us 7 days a week until 11pm every day to book your viewing appointment.

House to sell or rent?

Call 01475 888400 to book your free market appraisal.

Require a solicitor?

Ask us to supply a free legal quotation from Neill Clerk & Murray, Solicitors.
www.neillclerkmurray.co.uk

Stay fully up-to-date by following Neill Clerk on:



**60 West Blackhall Street
Greenock**

PA15 1UY

t:01475 888400

f:01475 888500

e: sales@neillclerk.co.uk

w: www.neillclerk.co.uk

