



📍 31 Almond Close, Wadswick Green, Corsham, Wiltshire, SN13 9GL

🏠 Asking Price £495,000

A luxury two-bedroomed pre-owned retirement apartment operated by Rangeford Villages.

- Luxury Retirement Property
- 2 Double Bedrooms
- En-suite
- Balcony
- Stunning Courtyard Setting
- Swimming Pool & Spa Facilities
- Restaurant & Coffee Shop
- Rangeford Domiciliary Care
- "Other Charges Apply"

🔑 Leasehold

🏠 EPC Rating B



RETIREMENT PROPERTY

A luxury second floor, two bedroomed pre-owned retirement apartment operated by Rangeford Villages. Situated in a stunning courtyard surrounded by open countryside providing a generous 1023 sq ft of accommodation. This contemporary, leasehold property features a large open plan living space with dual aspect floor to ceiling picture windows. The fully fitted kitchen includes integrated Neff appliances of electric oven, induction hob, combination microwave oven, dish washer and combined washing machine/tumble dryer. A special feature is the mobile island providing flexible and versatile working space with integrated wine rack. Two double bedrooms, master bedroom has a fitted wardrobe providing ample hanging space and storage with an en-suite shower, basin, and bespoke cupboard with feature lighting. Bedroom two has large windows and door to a south west facing balcony. Family bathroom, with shower, heated towel rail and luxury bespoke vanity unit. The apartment benefits from thermostatically controlled by room underfloor heating. Medium oak wood effect flooring in the living areas and carpets in both bedrooms. Window dressings of voiles and curtains are also included. The dimensions shown on the floor plan are approximate and individual apartment dimensions will be confirmed upon reservation. Please note, apart from the kitchen fittings supplied the apartment is sold unfurnished. Other charges apply in addition to the purchase price: Annual Service Charges and Event Fee are payable in addition to the purchase price. Please ask the Wadswick Green sales Advisors for details.

Situation

At Wadswick Green you can enjoy the comfort and convenience of living in a contemporary new village for people over 60, set in the stunning Wiltshire countryside. Here you can keep living life to the full and if there's a time when you need more support, the team at Wadswick Green are there for you.

Rangeford Care

Rangeford Care which is based within the village provides outstanding domiciliary care plans to residents who require more support to manage their daily lives. (Additional charges apply) *** Annual service charges, ground rent and Deferred Event Fee are payable in addition to the purchase price. Please ask the Wadswick Green Sales Advisor for further details***

Property Information

Council Tax Band: E

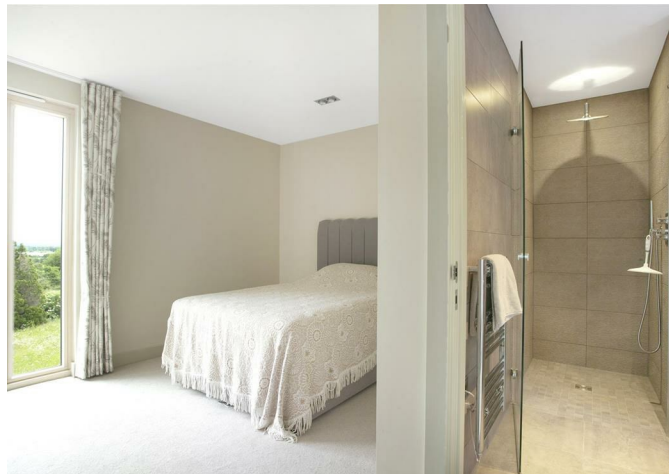
Leasehold

Mains Services

EPC Rating: B

Disclaimer

The dimensions shown on the floor are approximate, and individual apartment dimensions will be confirmed upon an agreed sale. Please note, apart from the kitchen fittings described and window dressings, the apartment is sold unfurnished.





Disclaimer These particulars, whilst believed to be accurate are set out as a general outline only for guidance and do not constitute any part of an offer or contract. Intending purchasers should not rely on them as statements of representation of fact, but must satisfy themselves by inspection or otherwise as to their accuracy. No person in this firms employment has the authority to make or give any representation or warranty in respect of the property. All measurements and distances are approximate only. Your home is at risk if you do not keep up repayments on a mortgage or other loan secured on it.