



📍 19 The Pavilion, Wadswick Green, Corsham, Wiltshire, SN13 9GS

🏷️ Asking Price £265,000

This stunning 1 bedroom pre-owned retirement apartment operated by Rangeford Villages. Situated in the Pavilion building, the hub of the village.

- 1 bed top floor with views facing west
- Luxury retirement apartment
- En-suite & Balcony
- Concierge & Transport Service
- Swimming Pool & Gym
- Restaurant & Coffee Shop
- Rangeford Domiciliary Care
- Guide price £265,000

🏠 Leasehold

📊 EPC Rating



This stunning 1-bedroom pre-owned retirement apartment is operated by Rangeford Villages. Situated in the Pavilion building, the hub of the village. This apartment has a large picture window in the living room with a west-facing balcony showing amazing views across the countryside. The kitchen with integrated Bosch appliances including oven, hob, washer dryer, dishwasher and a fridge with freezer compartment. A large bedroom with fitted double wardrobes and a Juliette balcony. En-suite shower room with Porcelanosa sanitary ware, featuring a ceramic tiled floor with mosaic tiles in the shower area. Heated towel rail and illuminated mirror. Engineered walnut hardwood high-quality flooring with thermostatically controlled underfloor heating via a centralised system.

Situation

Set in the stunning Wiltshire countryside, in 25 acres of beautifully landscaped grounds, Wadswick Green is a place where you can enjoy the comfort and convenience of living in a contemporary new village for people over 60 years of age. Here you can continue to live life to the full and if there's a time when you need more support, help is at hand.

Property Information

Council Tax band C

Mains Water etc...

Leasehold

EPC Rating: B

Rangeford Care

Rangeford Care which is based within the village provides outstanding domiciliary care plans to residents who require more support to manage their daily lives. (Additional charges apply) *** Annual service charges, ground rent and Deferred Event Fee are payable in addition to the purchase price. Please ask the Wadswick Green Sales Advisor for further details***

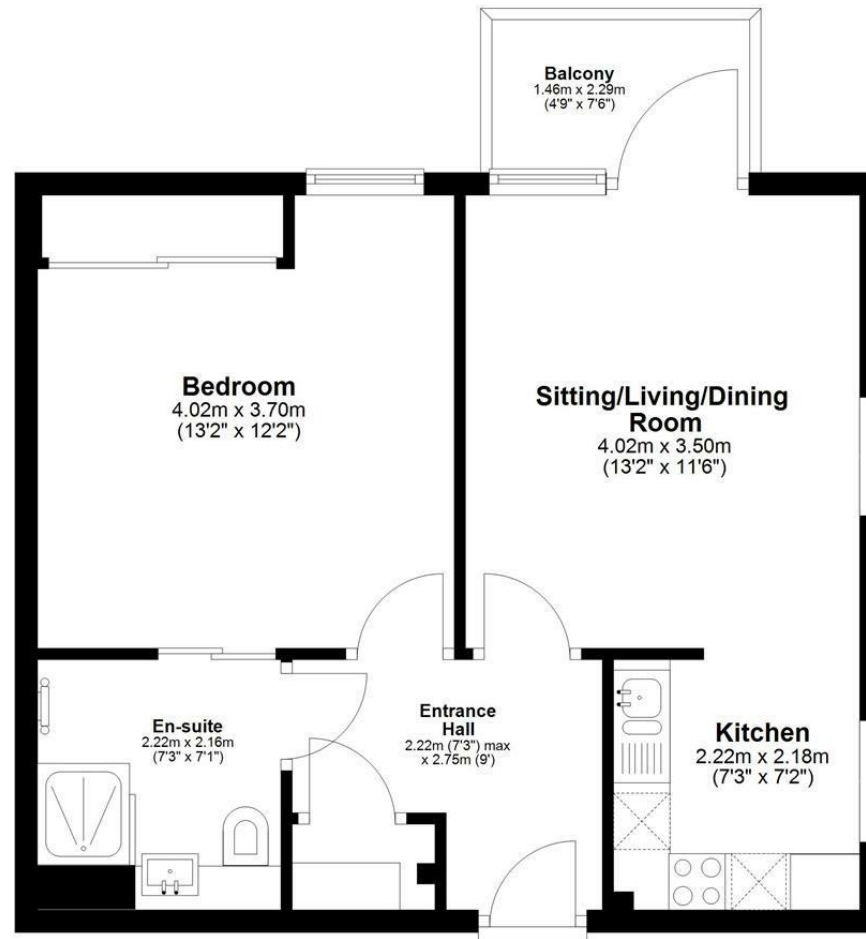
Disclaimer

The dimensions shown on the floor are approximate, and individual apartment dimensions will be confirmed upon an agreed sale. Please note, apart from the kitchen fittings described and window dressings, the apartment is sold unfurnished.



Second Floor

Approx. 46.3 sq. metres (498.2 sq. feet)



Total area: approx. 46.3 sq. metres (498.2 sq. feet)

Disclaimer These particulars, whilst believed to be accurate are set out as a general outline only for guidance and do not constitute any part of an offer or contract. Intending purchasers should not rely on them as statements of representation of fact, but must satisfy themselves by inspection or otherwise as to their accuracy. No person in this firm's employment has the authority to make or give any representation or warranty in respect of the property. All measurements and distances are approximate only. Your home is at risk if you do not keep up repayments on a mortgage or other loan secured on it.