





📍 16 Coppershell, Gastard, Corsham, Wiltshire, SN13 9PZ

🏠 Guide Price £285,000

Positioned in the heart of Gastard, on the outskirts of Corsham is this Very Pretty 2 Bedroom Mid-Terraced Victorian home which is beautifully presented throughout.

- Pretty Victorian Terraced Home
- Sought After Village Location
- Wealth Of Character & Charm
- 2 Double Bedrooms Plus Attic Room
- Enclosed Rear Garden
- Beautifully Presented Throughout
- Viewing Strongly Advised
- No Onward Chain

🏡 Freehold

🏠 EPC Rating E





Positioned in the heart of Gastard, on the outskirts of Corsham is this Very Pretty 2 Bedroom Mid-Terraced Victorian home which is beautifully presented throughout. The internal accommodation is set over three floors and comprises an entrance hall, sitting/dining room with a feature open fireplace, with stripped pine doors along with stripped pine floor boards that extends into the dining area giving a lovely homely feel. To the rear, there is a good size kitchen/breakfast room courtesy of a single-story extension. The kitchen/breakfast room benefits from a range of fitted wall and base units with a built-in oven along with ample space for both further free-standing appliances and dining. From here there is side access to the rear garden. On the first floor are two double bedrooms along with a family bathroom having a white suite with a shower above the bath. On the second floor is a delightful attic room making an ideal home office for those wanting a little extra space. Externally, the garden is a true delight with a mixture of lawn and patio areas with established flower borders and views to the rear beyond. The property is heated by oil central heating and has the benefit of uPVC double glazing throughout. This property is being sold with NO ONWARD CHAIN.

#### Location

Gastard is a small village set just over a mile from Corsham in a semi rural location with miles of countryside around you. There is the popular "Harp and Crown" public house which offers a wide range of Vegan food, a local playing fields with play park, active church and village hall offering classes such as Pilates. The village community arranges a yearly Fete, and has a group buying organisation for heating oil as there is no gas in Gastard. Historic Corsham offers a wide range of independent shops and eateries, excellent schools and leisure facilities. In the other direction is Whitley village with it's golf club, community shop and cycle repair shop. With many National trust areas such as Lacock close by, there is always somewhere beautiful to visit.

#### Property Information

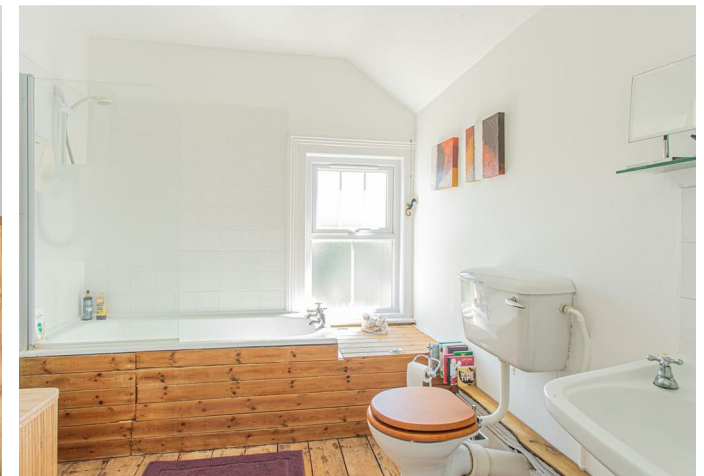
Oil Central Heating

Mains Drainage

E.P.C Rating: E

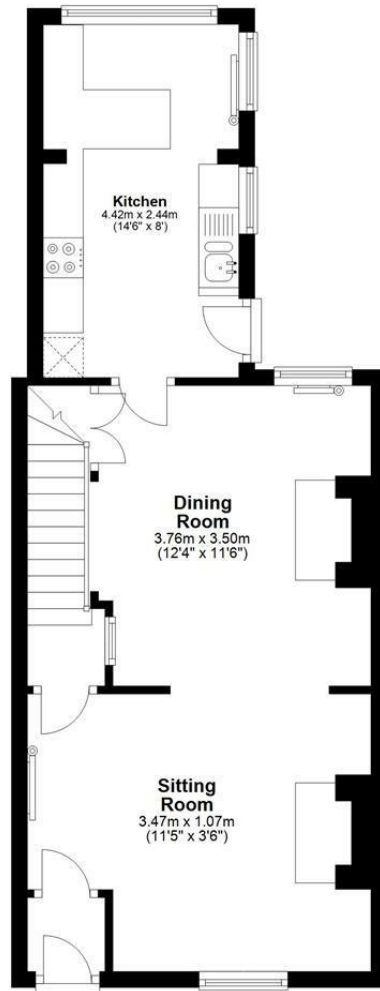
Council Tax Band: C

No Onward Chain



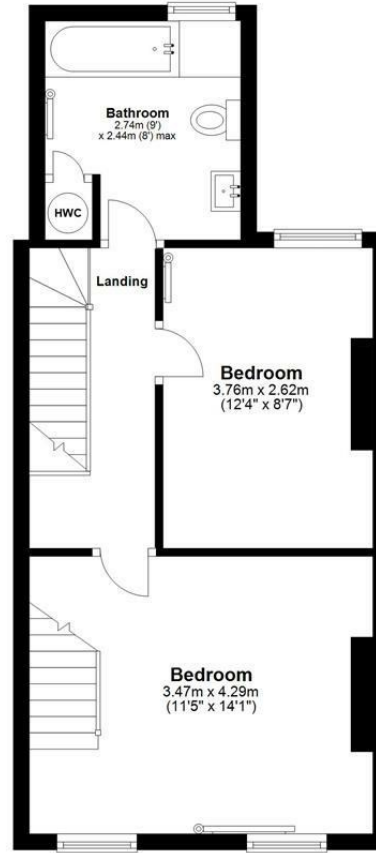
## Ground Floor

Approx. 42.5 sq. metres (457.4 sq. feet)



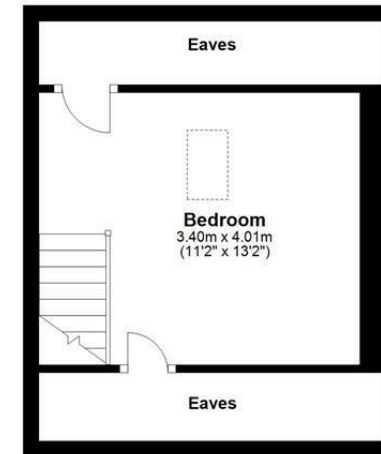
## First Floor

Approx. 38.4 sq. metres (413.2 sq. feet)



## Second Floor

Approx. 14.6 sq. metres (157.2 sq. feet)



Total area: approx. 95.5 sq. metres (1027.8 sq. feet)

Disclaimer: These particulars, whilst believed to be accurate are set out as a general outline only for guidance and do not constitute any part of an offer or contract. Intending purchasers should not rely on them as statements of representation of fact, but must satisfy themselves by inspection or otherwise as to their accuracy. No person in this firm's employment has the authority to make or give any representation or warranty in respect of the property. All measurements and distances are approximate only. Your home is at risk if you do not keep up repayments on a mortgage or other loan secured on it.