



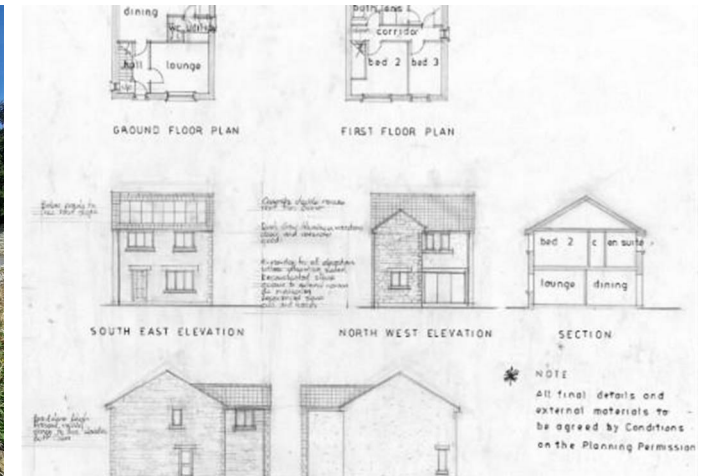
📍 Building Plot adj 2 Charles Street, Corsham, Wiltshire, SN13 0AN

🔗 Auction Guide £100,000

- For Sale by Online Auction
- Thursday 22nd May 2025
- Lot 22
- Guide Price £100,000+

🏠 Freehold

📊 EPC Rating



LOT 22
FOR SALE BY ONLINE AUCTION
THURSDAY 22nd MAY 2025
GUIDE PRICE £100,000+

Building plot with consent for a 3 bedroom detached house with GIA about 860ft² (80m²).

Corsham is a pretty and historic town located only about 8 miles from the World Heritage City of Bath, which itself offers some of the finest shopping outside the capital. Noted for its High Street, Corsham has a wealth of beautiful buildings dating from the 16th Century, including the magnificent stately home, Corsham Court with its landscaped open parkland and fields, perfect for walking dogs and exercising. The immediate area around Corsham is rich in countryside walks, bridleways and rural pastimes.

Planning consent was granted by Wiltshire Council under Application No PL/2024/01281 on 09 September 2024.

The approved plans provide on the ground floor; entrance hall, lounge, dining room, kitchen, utility and cloakroom. On the first floor; landing, bedroom 1 with en-suite, 2 further bedrooms and a bathroom.

Front and rear gardens and 2 parking spaces. The extent of the plot is shown edged red for identification purposes only on the aerial photo.

Front and rear gardens and 2 parking spaces. The extent of the plot is shown edged red for identification purposes only on the aerial photo.

Situation & Description

Building plot with consent for a 3 bedroom detached house with GIA about 860ft² (80m²).

Corsham is a pretty and historic town located only about 8 miles from the World Heritage City of Bath, which itself offers some of the finest shopping outside the capital. Noted for its High Street, Corsham has a wealth of beautiful buildings dating from the 16th Century, including the magnificent stately home, Corsham Court with its landscaped open parkland and fields, perfect for walking dogs and exercising. The immediate area around Corsham is rich in countryside walks, bridleways and rural pastimes.

Planning consent was granted by Wiltshire Council under Application No PL/2024/01281 on 09 September 2024.

The approved plans provide on the ground floor; entrance hall, lounge, dining room, kitchen, utility and cloakroom. On the first floor; landing, bedroom 1 with en-suite, 2 further bedrooms and a bathroom.

Front and rear gardens and 2 parking spaces. The extent of the plot is shown edged red for identification purposes only on the aerial photo.

Viewings

At any time by attending site.

If you have any concerns with viewings, please contact the relevant Strakers office and we would be happy to discuss them with you and hopefully put you at ease.

Disclaimer These particulars, whilst believed to be accurate are set out as a general outline only for guidance and do not constitute any part of an offer or contract. Intending purchasers should not rely on them as statements of representation of fact, but must satisfy themselves by inspection or otherwise as to their accuracy. No person in this firms employment has the authority to make or give any representation or warranty in respect of the property. All measurements and distances are approximate only. Your home is at risk if you do not keep up repayments on a mortgage or other loan secured on it.



For further details 01249 712039
corsham@strakers.co.uk

In branch | Online | On the move
strakers.co.uk