



📍 2 Springfield Close, Corsham, Wiltshire, SN13 0JP

🔗 Price Guide £310,000

Well positioned between Bath and Corsham this 1960's style 3 bedroom end terrace family home will make an excellent family home.

- 3 Bedrooms
- End Terrace Family Home
- Gas Central Heating
- Double Glazed Throughout
- Front, Rear And Side Gardens
- Garage And Additional Parking
- No Onward Chain

🏠 Freehold

📊 EPC Rating



Well positioned between Bath and Corsham this 1960's style 3 bedroom end terrace family home is will make an excellent family home. Located off Leafy Lane, Rudloe is a lovely and friendly community and the property itself is close to open country as well as having excellent bus links to Bath and Chippenham. The property itslef is accessed into a through hallway with stairs to the first floor, an open plan under stairs area, useful storage cupboard and doors to the cloakroom, kitchen and living room. The kitchen could be utilized as a sizeable kitchen dining room with potential to knock into the hallway cupboard increasing the size of the kitchen. The living room is naturally light with many windows, a door giving access to the rear garden and a further door to the large Victorian style conservatory with French doors to the side garden. Off the first floor landing is the bathroom with a fitted white suite, two double bedrooms both of which have built in wardrobes and a single located to the rear. The property is double glazed throughout and warmed by mains gas fired central heating system, heated off a combination boiler. Externally the front garden is enclosed by a low wall and fencing, laid to patio and with a gate to the off road parking which will accommodate one family car as well as the single garage with roller door and courtesy door to the side. Off the patio is the side garden, accessed by a gate. The garden to the side is private and enclosed by trees and shrubs which extend to the front of the property which is largely open to the front. The side and front gardens are laid mainly to lawn with plenty of trees, bushes and shrubs and is a good size which further compliments the property. Springfield close has the benefit of being sold with no onward chain.

Situation

Every facility in Corsham is within a ten to fifteen minute walk including the primary school, secondary school, sports center, library, the arts center and cricket club (each of which have children's activities), the picturesque high street with its variety of interesting shops, cafes, public houses and Corsham Court with its lovely grounds. More comprehensive shopping and leisure facilities are available in The World Heritage City of Bath within about nine miles which has a mainline railway station with fast access to London (Paddington) as does nearby Chippenham which is within about 4 miles. Junctions 16 and 17 of the M4 motorway are within easy reach and commuting distance of Bristol, Swindon and London. Rudloe is a lovely community with good bus links to Bath and Chippenham. There are stunning local walk nearby as well as a coffee shop on Leafy Lane and Rudloe Hall Hotel.

Property information

Mains Services

Council Tax Band: C

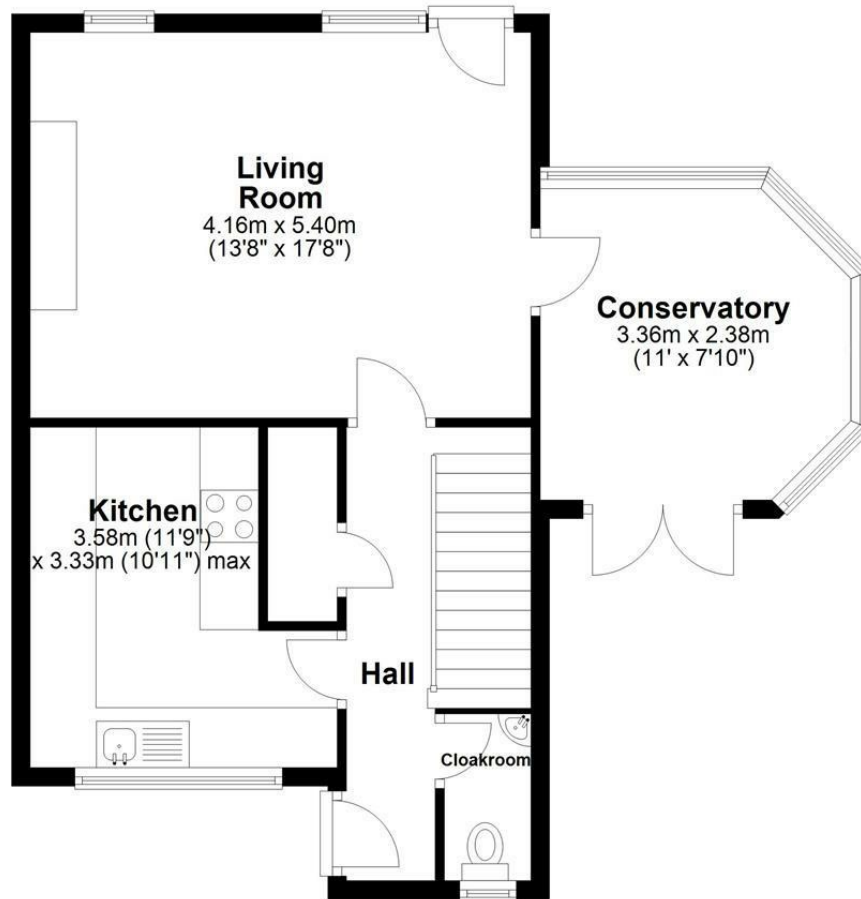
E.P.C Rating: D

Feehold

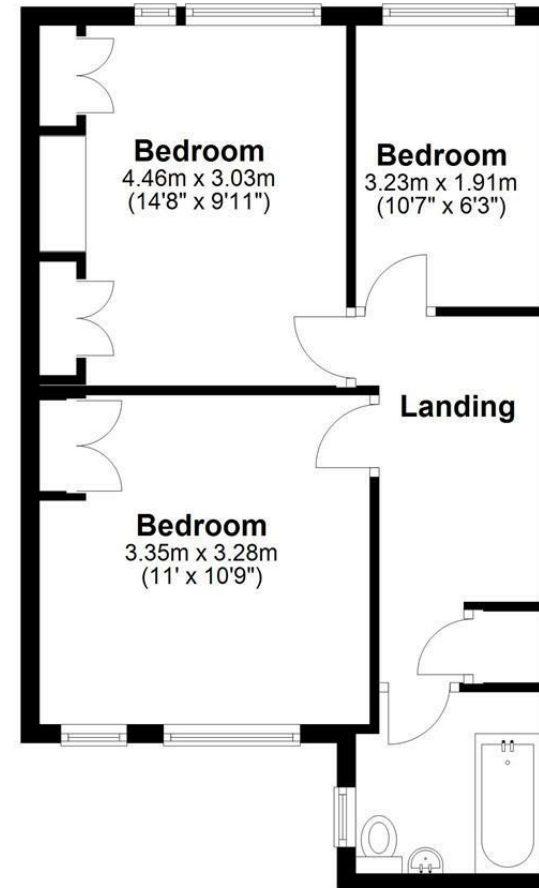
Gas Central Heating



Ground Floor



First Floor



Disclaimer: These particulars, whilst believed to be accurate are set out as a general outline only for guidance and do not constitute any part of an offer or contract. Intending purchasers should not rely on them as statements of representation of fact, but must satisfy themselves by inspection or otherwise as to their accuracy. No person in this firm's employment has the authority to make or give any representation or warranty in respect of the property. All measurements and distances are approximate only. Your home is at risk if you do not keep up repayments on a mortgage or other loan secured on it.