



📍 Fig Tree Cottage, Lower Wadswick, Box, Corsham, Wiltshire, SN13 8JE

🏠 Guide Price £500,000

Located in this quiet countryside location on the outskirts of Corsham, we are delighted to bring to the market this Beautifully Presented 3-bedroom semi-detached Cottage with stunning views and professionally landscaped gardens with the added benefit of a garage and parking for 3 cars.

- 3 Bedroom Period Cottage
- Stunning Home Garden Office with Power & Light
- Beautifully Presented Throughout
- Sitting Room With Feature Inglenook Fireplace
- Open Plan Kitchen Breakfast Room
- Single Garage And Parking For 3 Cars
- Beautiful Landscaped Gardens With Stunning Views
- Newly Installed Double Glazed Windows
- Under Floor Heating Throughout
- Rural Location Close to Box & Corsham

🏡 Freehold

🏠 EPC Rating D



Located in this quiet countryside location on the outskirts of Corsham we are delighted to bring to the market this Beautifully Presented 3 Bedroom Semi-Detached Cottage offering lovely views across open countryside. The cottage has been lovingly looked after and improved, giving a contemporary feel while maintaining a wealth of character and charm throughout. The property comprises an entrance porch, a dual aspect living room with a feature inglenook fireplace with gas stove and exposed timber beams leading into a fully fitted kitchen breakfast room with French doors leading to the rear garden. The ground floor also benefits from a downstairs WC. On the first floor, you are welcomed by far-reaching views, along with the three bedrooms, the master having built-in wardrobes and a family bathroom making up the accommodation. Externally, the gardens are a total joy and have been a real passion for the owners, having been professionally landscaped by a renowned local landscape gardener is a perfect place to relax and enjoy the nature that is in abundance. To the rear of the garden is a newly erected home office measuring 100 square feet, ideal for those wishing to spend time working from home having full power and light and bi folding doors with views across the open farm land which are simply stunning. To the front is a large single garage and parking for three cars. In short, to fully appreciate all that this cottage has to offer, we would advise an early viewing.

Situation

Situated in Lower Wadswick, the property is surrounded by beautiful Wiltshire countryside yet, the Georgian City of Bath is just 7.5 miles to the west providing superb High Street shopping and entertainment. The village of Box is 2 miles away with a mini supermarket, butchers, gift shop, cafe, and Primary School. The market town of Corsham is 4 miles away a pretty and historic town of architectural significance located on the southern fringes of the Cotswold's, an area of outstanding natural beauty and some 8 miles North East of the fine Georgian City of Bath. The town, noted for its fine High Street, has a wealth of beautiful and historic buildings dating from the 16th Century such as the Alms House and the historic Corsham Court with its landscaped open parkland. The town caters for most day-to-day needs with a range of national and bespoke shops, coffee houses, boutiques, restaurants and a variety of public houses. Mainline rail links are 8.5 miles away in Chippenham. Communications are excellent: Bath, Bristol and Swindon are all within easy motoring distance; there are fast road links to London and the West Country via the M4 motorway (J17 and 18 approximately 15 20 minutes away); and main line rail services are available from either Bath or Chippenham to Bristol Temple Meads and London Paddington.

Property Information

Council Tax Band: D

Freehold

Private Drainage

Mains Gas Fired Central Heating

EPC Rating: D



**Fig Tree Cottage,
1 Lower Wadswick, SN13 8JE**
 Approx. Gross Internal Area*
 89.18 M² - 960 Ft²
 Approx. Out Building Area*
 35.86 M² - 386 Ft²

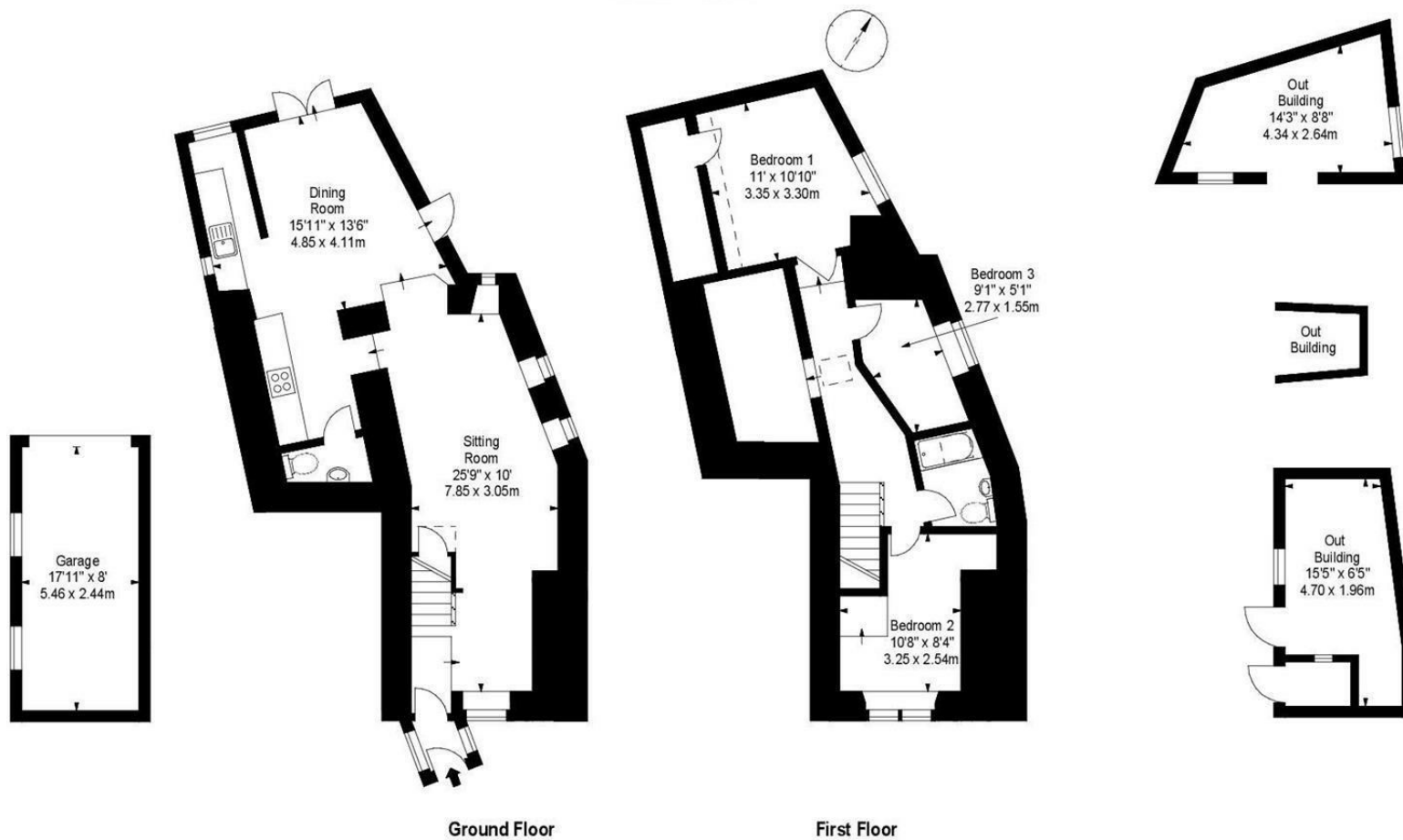


Illustration For Identification Purposes Only. Not To Scale

* As Defined by RICS - Code of Measuring Practice

Disclaimer These particulars, whilst believed to be accurate are set out as a general outline only for guidance and do not constitute any part of an offer or contract. Intending purchasers should not rely on them as statements of representation of fact, but must satisfy themselves by inspection or otherwise as to their accuracy. No person in this firms employment has the authority to make or give any representation or warranty in respect of the property. All measurements and distances are approximate only. Your home is at risk if you do not keep up repayments on a mortgage or other loan secured on it.