



📍 14a Arnolds Mead, Corsham, Wiltshire, SN13 0BL

🔗 Offers In Excess Of £400,000

Situated very close to Corsham's town centre this brand new individually built 3 bedroom detached family home is available for immediate viewings and occupation.

- Brand New 3 Bedroom Detached Family Home
- Located Within A Very Short Walk From The Town Center
- Open Plan Kitchen Dining Room With Built In Appliances
- Gas Central Heating
- Double Glazed Throughout
- Off Road Parking For Upto 3 Cars
- Enclosed Private Rear Garden
- Solar Panels Fitted To The Roof

🏡 Freehold

🏠 EPC Rating A



Situated very close to Corsham's town centre this brand new and individually built 3 bedroom detached family home is available for immediate viewing. With accommodation over two floors the ground floor includes a through hallway laid to wood effect laminate flooring, stairs to the first floor landing with under stairs cupboard and doors to the cloakroom, living room and kitchen dining room, the cloakroom having an attractive white suite. The living room, situated to the front of the property is carpeted and partly open plan to the dining area. The kitchen has a range of wall and base units and built in appliances which include a double electric oven and electric hob, fridge freezer and dishwasher with the wood effect laminate flooring continuing from the hallway. French doors in the dining area gives access to the garden. The downstairs benefits from under floor heating throughout. Off the first floor landing are the three bedrooms. The largest, located to the rear has a door to an en suite shower room, with the second and third bedrooms both located to the front are double and single respectively and an attractive white bathroom suite completes the upstairs. The property is double glazed throughout and warmed by a mains gas central heating system. Externally the private rear garden is laid to lawn and patio which extends to one side of the property and is enclosed by closeboard fencing with access to the front along both sides of the property through lockable gates. The front is also enclosed by low fencing to the front and higher to the side and is laid to a mixture of tarmac which will allow upto three cars to be parked, stone chippings and a path and steps from the road leading to the front door. The property benefits roof mounted solar panels. In short, this is an immaculately presented, modern clean and stylish property which is ready for immediate occupation and an internal inspection is highly recommended.

Situation

Every facility in Corsham is within a ten to fifteen minute walk including the primary school, secondary school, sports center, library, the arts center and cricket club (each of which have children's activities), the picturesque high street with its variety of interesting shops, cafes, public houses and Corsham Court with its lovely grounds. More comprehensive shopping and leisure facilities are available in The World Heritage City of Bath within about nine miles which has a mainline railway station with fast access to London (Paddington) as does nearby Chippenham which is within about 4 miles. Junctions 16 and 17 of the M4 motorway are within easy reach and commuting distance of Bristol, Swindon and London.

Property information

Council Tax Band:

Double Glazed

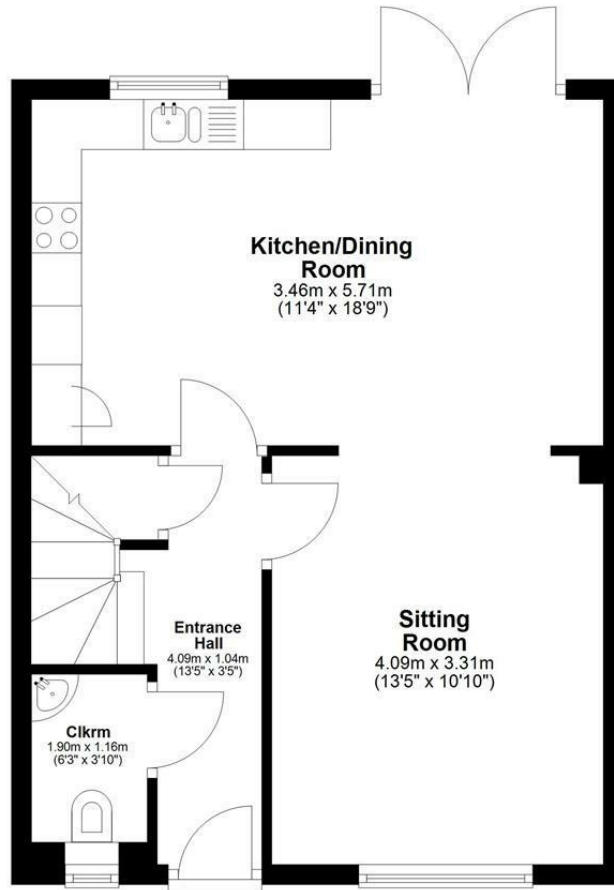
Mains Services

SAP Rating



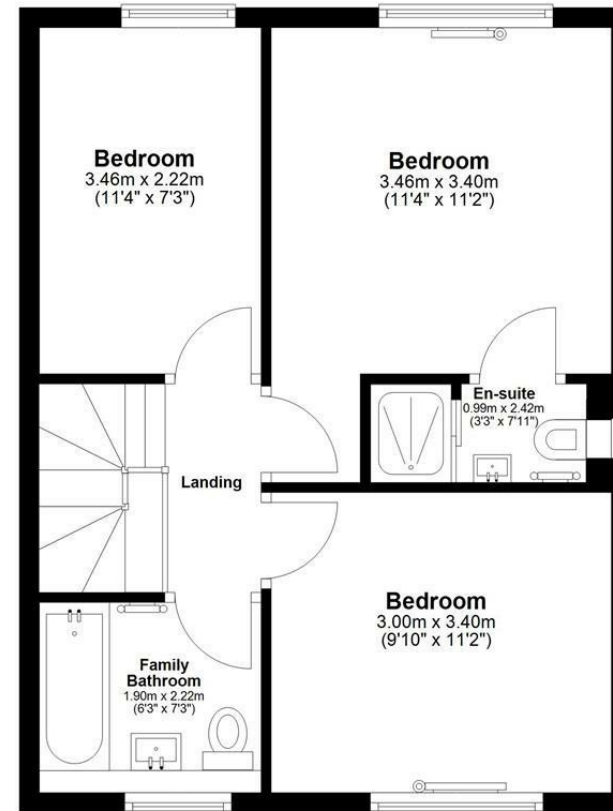
Ground Floor

Approx. 43.7 sq. metres (470.1 sq. feet)



First Floor

Approx. 43.7 sq. metres (470.1 sq. feet)



Total area: approx. 87.4 sq. metres (940.3 sq. feet)

Disclaimer: These particulars, whilst believed to be accurate are set out as a general outline only for guidance and do not constitute any part of an offer or contract. Intending purchasers should not rely on them as statements of representation of fact, but must satisfy themselves by inspection or otherwise as to their accuracy. No person in this firm's employment has the authority to make or give any representation or warranty in respect of the property. All measurements and distances are approximate only. Your home is at risk if you do not keep up repayments on a mortgage or other loan secured on it.