



📍 Flat 4 Neale Court, Beechfield Road, Corsham, SN13 9YL

🏠 Price Guide £210,000

This charming 2 bedroom flat benefits from its quiet off road position and is just a short walk from the centre of Corshams Vibrant High Street, the heart of the town.

- 2 Well Proportioned Double Bedrooms With Flexible Accommodation
- Contemporary And Newly Fitted Bathroom With Large Bath And Overhead Shower
- Bright And Spacious Living Area Partly Open Plan To The Kitchen
- Recently Refitted Contemporary Style Fitted Kitchen With Built In Oven
- Modern And Efficient Gas Fired Combination Boiler
- Two Allocated Parking Spaces
- Well Maintained And Spacious Communal Gardens Located To The Front Of The Development

🔑 Leasehold

🏠 EPC Rating C



This charming 2 bedroom first floor flat benefits from its quiet off road position and is just a short walk from the centre of Corshams Vibrant High Street, the heart of the town. This flat, located in Neale Court is immaculately presented throughout and offers comfortable modern living in a charming and highly convenient location, a short walk from all the towns facilities. The property could be an ideal purchase for first time buyers, downsizers or as an investment opportunity. The modern development is accessed through a communal security door with a flight of stairs taking you to the first floor and the flat itself. As you enter the hallway the accommodation starts with the main double bedroom which has space for wardrobes and additional furniture whilst the second, also a double, has the flexibility to become an office, guest room or additional living space. The recently fitted contemporary bathroom suite has a large bath with dual overhead shower and further complimented by stylish wall tiles. The bright and spacious living room is fitted with a large cupboard with shelving space and is partly open plan to the also recently fitted and stylish kitchen which is perfect for cooking and dining. It is fitted with shaker style base units with a built in electric oven, gas hob and extractor hood, ceramic sink and space for a fridge and washing machine. The flat has aluminum double glazing throughout and is warmed by a mains gas fired central heating system through a combination boiler whilst externally there is parking for two cars, this being a valuable asset in this location. The flat has the use of the well maintained and spacious communal gardens which are located to the front of the development and are laid mainly to lawn patio and a number of well cared for bushes and shrubs..

Situation

Every facility in Corsham is within a ten to fifteen minute walk including the primary school, secondary school, sports center, library, the arts center and cricket club (each of which have children's activities), the picturesque high street with its variety of interesting shops, cafes, public houses and Corsham Court with its lovely grounds. Neale Court is located close to the heart of Corsham in a charming and highly convenient location. Perfectly situated just a short walk away from the vibrant High Street and has excellent bus links to Bath, Chippenham and the M4.

Property information

Council Tax Band: B

Double Glazed Throughout

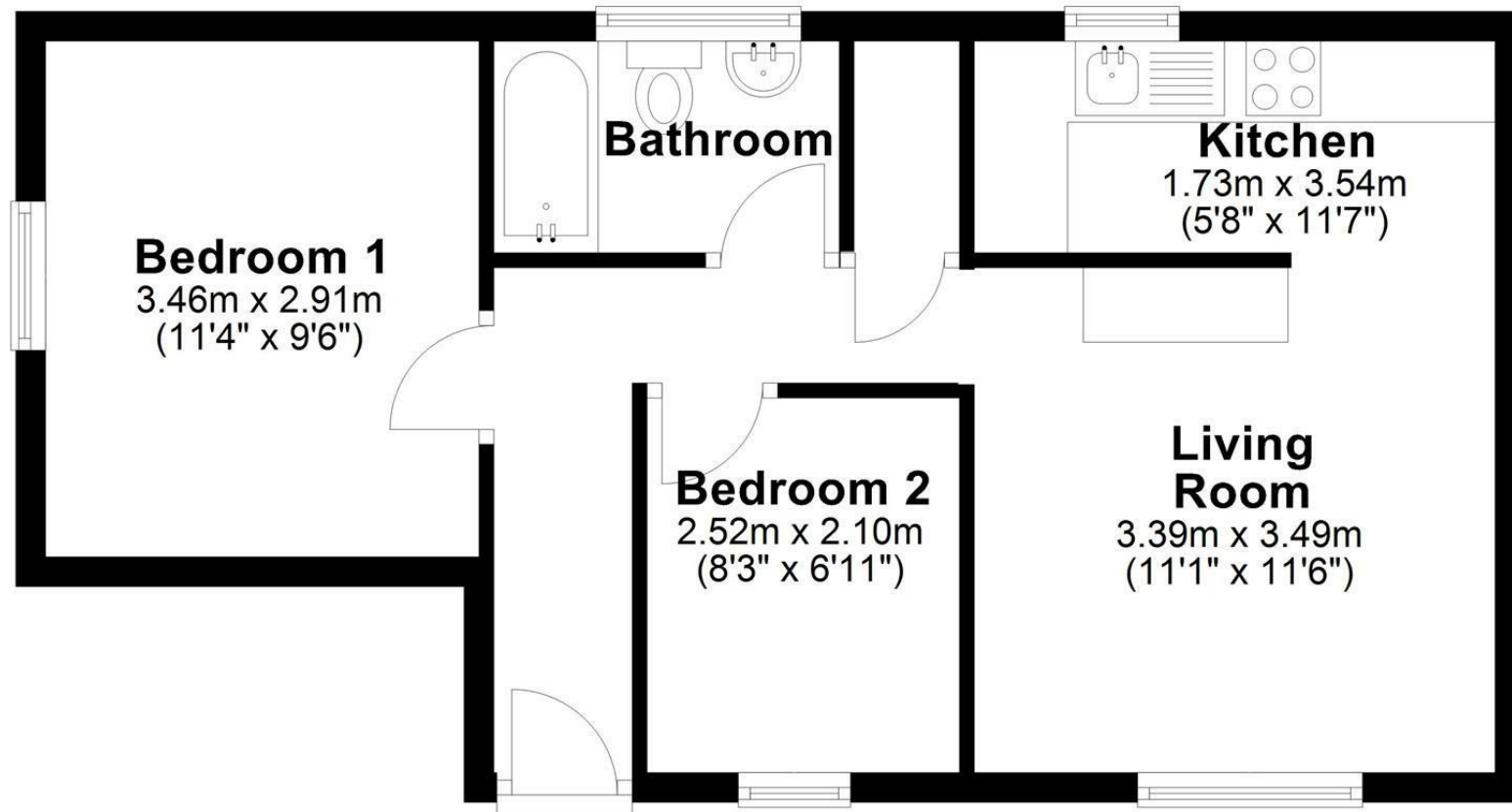
Mains Services

EPC Rating: C

Allocated Parking



Ground Floor



Disclaimer: These particulars, whilst believed to be accurate are set out as a general outline only for guidance and do not constitute any part of an offer or contract. Intending purchasers should not rely on them as statements of representation of fact, but must satisfy themselves by inspection or otherwise as to their accuracy. No person in this firm's employment has the authority to make or give any representation or warranty in respect of the property. All measurements and distances are approximate only. Your home is at risk if you do not keep up repayments on a mortgage or other loan secured on it.