



📍 22 Rowan Lane, Wadswick Green, Corsham, Wiltshire, SN13 9GN

🏷️ Asking Price £325,000

1 bedroom first-floor pre-owned retirement apartment in Wadswick Green Retirement Village which is operated by Rangeford Villages, and offers a generous 667 sq.ft of accommodation, located within a tranquil courtyard setting yet close to the Village amenities.

- Luxury Retirement Apartment
- 1 double bedroom
- Spacious shower room
- Private Balcony
- Countryside Views
- Newly redecorated throughout
- Underfloor heating
- Swimming pool and Spa facilities
- Restaurant & Coffee Lounge
- Rangeford Domiciliary Care

🏠 Leasehold

🏠 EPC Rating



A beautifully restored one bedroom luxury apartment that sits in a perfect location in the Wadswick Green Retirement Village complex, with stunning views over lovely countryside. This charming apartment offers a generous 667 sq ft of accommodation with ease of access to all the excellent facilities in the Pavilion Building.

This property features a spacious and light entrance hall with useful storage cupboards. The open plan living area has brand new light oak flooring and floor to ceiling windows. There is a fully fitted kitchen with integral Bosch appliances and a moveable island unit which incorporates a useful breakfast bar. From the kitchen area there is a good size balcony facing east which is exclusive to this side of the building and enjoys far reaching views. The bathroom has been newly refurbished and features a luxury walk-in shower, underfloor heating and a heated towel rail. The double bedroom has a newly fitted carpet and a comprehensive range of fitted cupboards and drawers. There is a floor to ceiling window with integral vertical blinds. The whole apartment has been completely redecorated and is in "turn key" condition.

Other charges apply in addition to the purchase price.
*** Annual Service Charges, ground rent and deferred Event Fees are payable in addition to the purchase price
*** Please ask Wadswick Green Sales Advisors for details. Rangeford Care is based within the village and provides outstanding domiciliary care plans to residents who require more support to manage their daily lives.

Situation

At Wadswick Green Retirement Village you can enjoy the comfort and convenience of living in a contemporary new village for people over 60, set in the stunning Wilshire countryside. Here you can keep living life to the full and if there's a time when you need more support, they are there for you.

Property Information

Council Tax Band: C

Leasehold

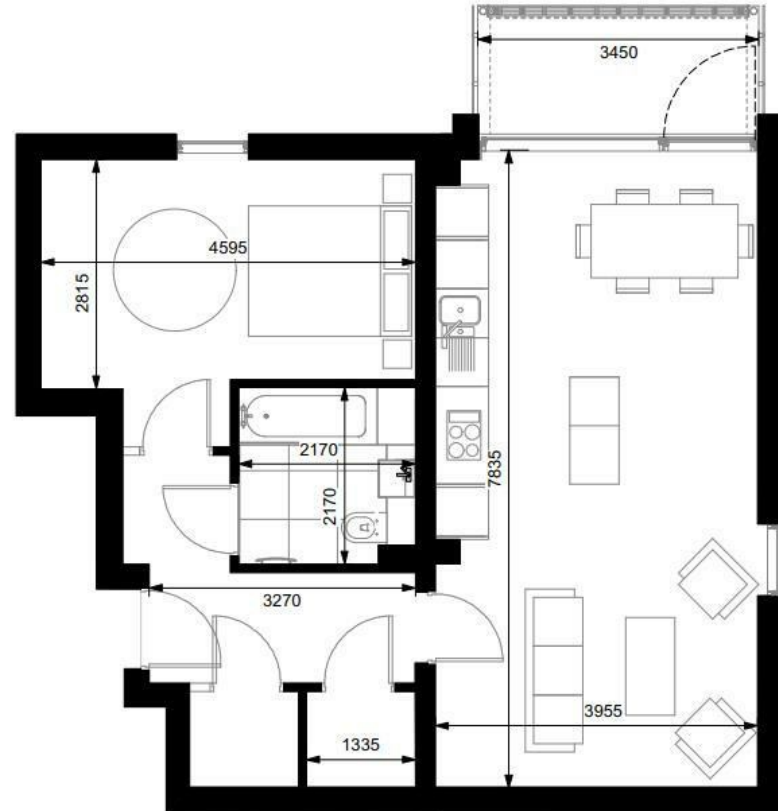
Mains Services

EPC rating: B



1 Bed Apartment

Gross internal floor area:
62.00 sqm
667.36 sqft



Disclaimer These particulars, whilst believed to be accurate are set out as a general outline only for guidance and do not constitute any part of an offer or contract. Intending purchasers should not rely on them as statements of representation of fact, but must satisfy themselves by inspection or otherwise as to their accuracy. No person in this firm's employment has the authority to make or give any representation or warranty in respect of the property. All measurements and distances are approximate only. Your home is at risk if you do not keep up repayments on a mortgage or other loan secured on it.