



📍 134 Bath Road, Atworth, Wiltshire, SN12 8LA

🔗 Auction Guide £190,000

Attractive 3 Bedroom Period Terraced Cottage in need of updating throughout, once owned by the Fuller Estate as an oast house designed for kilning (drying) hops as part of the brewing process which was built at the end of the 1800'

- For Sale by Online Auction
- Thursday 17th October 2024
- Lot 28
- Guide Price £190,000+

🏠 Freehold

📊 EPC Rating F



LOT 28
FOR SALE BY ONLINE AUCTION
THURSDAY 17th October 2024
GUIDE PRICE £190,000+

Delightful 3 bedroom terraced cottage, formally an Oast House and in need of modernisation.

The accommodation comprises on the ground floor; entrance porch, hallway with pantry off, sitting room, kitchen and utility room. On the first floor; landing, 3 bedrooms and a bathroom.

The cottage is accessed via a path with a long front garden enclosed by stone walls and mainly lawn. There is a shed, greenhouse and summer house, also a variety of shrubs and flower borders.

The property has been in the same family ownership for almost 100 years.

Situation & Description

Delightful 3 bedroom terraced cottage, formally an Oast House and in need of modernisation.

Atworth is a popular and sought after village surrounded by beautiful countryside with immediate walking access to open countryside and is approximately three miles from Corsham. The village offers a number of good amenities including the White Hart public house, church, infant and primary school plus being in the catchment for St Laurence School in Bradford on Avon. There is a garage/convenience store/post office and Lowden Nurseries with café.

There are further shops and facilities in the nearby village of Box whilst the Georgian City of Bath and towns of Corsham, Bradford on Avon and Melksham provide a more comprehensive range of shopping facilities, schools and services. Corsham is a pretty and historic small town some 8 miles Northeast of the Georgian City of Bath. Atworth has good transport links to the M4 junction 17 and is within easy commuting distance of Bath with a direct bus route (c.9 miles) every half hour from the village plus Bristol and Swindon. Rail services are available at Bath and Chippenham providing hourly services to London Paddington.

The accommodation comprises on the ground floor; entrance porch, hallway with pantry off, sitting room, kitchen and utility room. On the first floor; landing, 3 bedrooms and a bathroom.

The cottage is accessed via a path with a long front garden enclosed by stone walls and mainly lawn. There is a shed, greenhouse and summer house, also a variety of shrubs and flower borders.

The property has been in the same family ownership for almost 100 years.

What3Words///acrobats.guardian.soft

Viewings

To arrange a viewing, contact: Corsham office on 01249 712039

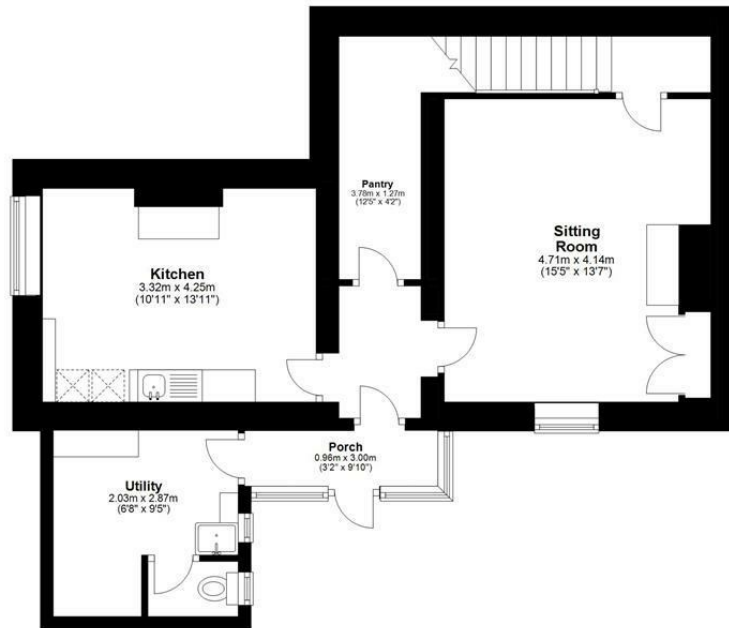
There will be numerous pre-arranged open house viewing slots lasting for 30 minutes and you can book in by contacting the Auctioneers.

If you have any concerns with viewings, please contact the relevant Strakers office and we would be happy to discuss them with you and hopefully put you at ease.



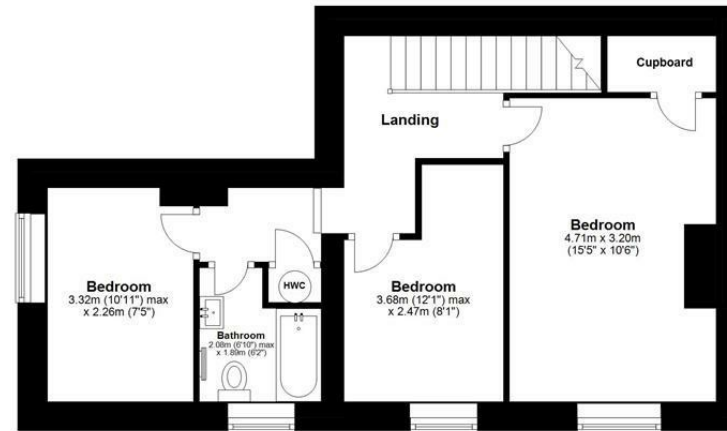
Ground Floor

Approx. 61.8 sq. metres (665.1 sq. feet)



First Floor

Approx. 48.4 sq. metres (520.6 sq. feet)



Total area: approx. 110.2 sq. metres (1185.7 sq. feet)

Disclaimer These particulars, whilst believed to be accurate are set out as a general outline only for guidance and do not constitute any part of an offer or contract. Intending purchasers should not rely on them as statements of representation of fact, but must satisfy themselves by inspection or otherwise as to their accuracy. No person in this firm's employment has the authority to make or give any representation or warranty in respect of the property. All measurements and distances are approximate only. Your home is at risk if you do not keep up repayments on a mortgage or other loan secured on it.