



📍 15 Bences Close, Marshfield, Chippenham, Wiltshire, SN14 8TD

🏠 Price Guide £675,000

Located in the charming and historic village of Marshfield this spacious 5 bedroom semi detached family home has accommodation over three floors and is positioned in a quiet road a short walk from the High Street.

- 5 Bedroom Semi Detached Family Home
- En Suite Facilities
- Recently Fitted Bathroom Suite
- Gas Central Heating
- Double Glazed Throughout
- Garage And Additional Parking
- Private Rear Gardens

🏡 Freehold

📊 EPC Rating C



Located in the charming and historic village of Marshfield this spacious 5 bedroom semi detached family home has accommodation over three floors and is positioned in a quiet road a short walk from the High Street. The ground floor accommodation includes an entrance hallway with 2 useful storage cupboards, cloakroom and stairs to the first floor landing. The main living room has a window to the front and French doors to the garden and features an elegant stone fireplace with inset gas fire. The kitchen dining room, located at the end of the hallway is fitted with shaker style wall and base units with a built in electric cooker, gas hob and extractor hood and space for a washing machine, fridge freezer and dishwasher, tiled flooring, French doors to the garden and space for a dining table making this a sociable area for families. To the first floor landing are stairs to the top floor and doors to the following rooms. The main bedroom has the benefit of en suite facilities and built in wardrobes and of the remaining bedrooms, two are double and the fourth is single. A fantastic and newly fitted bathroom completes the upstairs. The top floor consists of a landing area with storage cupboards and doors to a bathroom suite one side and a larger bedroom to the other, both rooms of which have sky lights. The property is double glazed throughout and warmed by a mains gas fired central heating system. Externally the front has an attractive hedgerow running the length of the property and to the side is parking for two family sized cars leading to the single garage which has an up and over door, power and light and a courtesy door from the garden. The rear garden is private and enclosed by wall and fencing and is laid mainly to lawn and fencing with a number of attractive bushes trees and shrubs.

Marshfield

Marshfield is a highly sought after village with convenient access links to the M4 (Junction 18 Bath or 17 Chippenham). This vibrant village is blessed with historic charm and character whilst also offering a range of amenities including two public houses, a general store, post office, butcher, newsagent, vet, doctor, garage, church, tea shop, hair salon, community centre/playgroup and modern primary school. Mainline rail links are widely available from nearby Chippenham or equally Bath/Bristol. The historic City of Bath is only a short distance away and provides an abundance of arts and culture based events, fine dining and shopping.

Property information

Council Tax Band E

Freehold

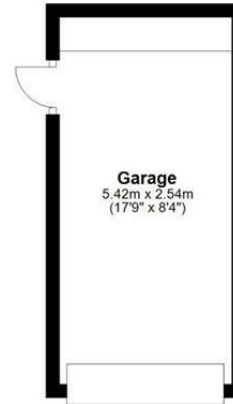
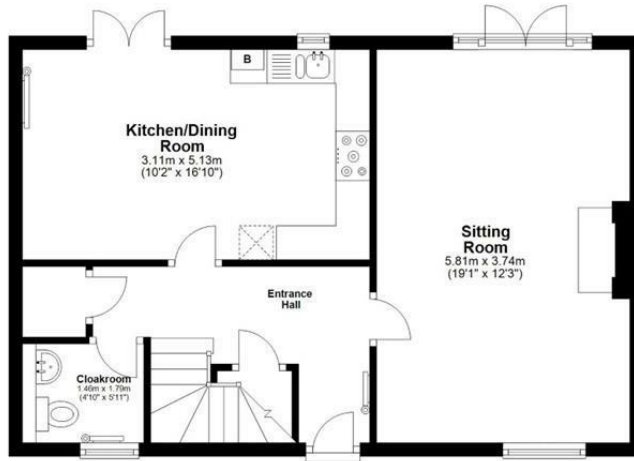
Gas central heating

EPC Rating

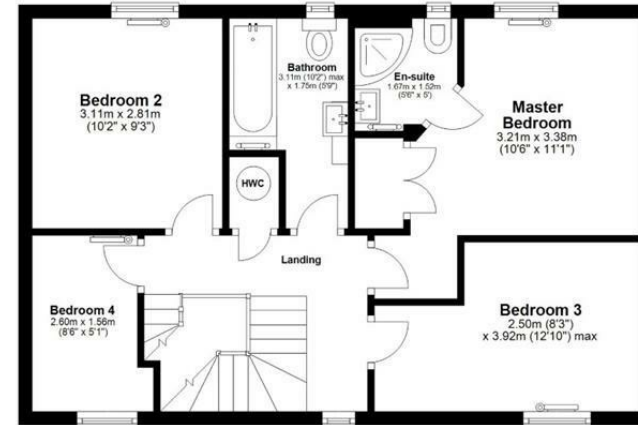
Mains Services



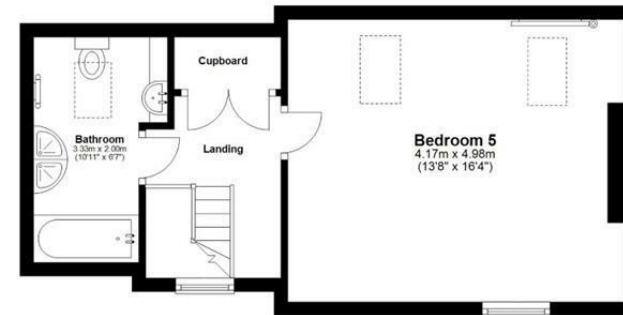
Ground Floor
Main area: approx. 52.1 sq. metres (560.6 sq. feet)
Plus garages, approx. 13.8 sq. metres (148.4 sq. feet)



First Floor
Approx. 52.1 sq. metres (560.6 sq. feet)



Second Floor
Approx. 33.8 sq. metres (363.5 sq. feet)



Main area: Approx. 137.9 sq. metres (1484.8 sq. feet)
Plus garages, approx. 13.8 sq. metres (148.4 sq. feet)

Disclaimer These particulars, whilst believed to be accurate are set out as a general outline only for guidance and do not constitute any part of an offer or contract. Intending purchasers should not rely on them as statements of representation of fact, but must satisfy themselves by inspection or otherwise as to their accuracy. No person in this firm's employment has the authority to make or give any representation or warranty in respect of the property. All measurements and distances are approximate only. Your home is at risk if you do not keep up repayments on a mortgage or other loan secured on it.