



📍 5 Rowan Lane, Wadswick Green, Corsham, Wiltshire, SN13 9GN

🏠 Asking Price £410,000

2 Bedroom first floor retirement apartment operated by Rangeford offers a generous 1015 sq ft of accommodation, located within a stunning courtyard setting.

- Luxury Retirement Apartment
- 2 Bedrooms
- En-suite & Balcony
- Stunning Courtyard Setting
- First Floor With Views
- Swimming Pool & Spa Facilities
- Restaurant & Coffee Lounge
- Rangeford Domiciliary Care

🏠 Leasehold

🏠 EPC Rating B



RETIREMENT PROPERTY

A luxury first-floor, two-bedroomed pre-owned retirement apartment operated by Rangeford Villages. Situated in a stunning courtyard surrounded by open countryside providing a generous 1008 sq ft of accommodation. This contemporary, leasehold property features a large open plan living space with a lounge area dual aspect floor-to-ceiling picture windows with a balcony off the lounge. The fully fitted kitchen also comes with integrated Bosch appliances including an electric oven, induction hob, microwave oven, dishwasher and combined washing machine/tumble dryer. A special feature is the mobile island providing a flexible and versatile working space with integrated wine rack. Two double bedrooms, master bedroom has en-suite with walk-in shower, basin with under cupboard, shaver point and feature lighting. Both bedrooms with fully fitted carpets and window dressings. The main bathroom benefits from a bath, basin and heated towel rail. The apartment benefits from thermostatically controlled room underfloor heating, with light oak hardwood flooring in the living areas. The dimensions shown on the floor plan are approximate and individual apartment dimensions will be confirmed upon reservation. Please note, apart from the kitchen fittings supplied the apartment is sold unfurnished. Other charges apply in addition to the purchase price: Annual Service Charges and Event Fee are payable in addition to the purchase price. Please ask the Wadswick Green sales Advisors for details.

Rangeford Care are based within the village and provide outstanding domiciliary care plans to residents who require more support to manage their daily lives. The dimensions shown on the floor plans are approximate and individual apartment dimensions will be confirmed upon reservation. Please note, apart from the kitchen fittings described, apartments are sold unfurnished. Other charges apply in addition to the purchase price.

Situation

At Wadswick Green Retirement homes you can enjoy the comfort and convenience of living in a contemporary new village for people over 60, set in the stunning Wiltshire countryside. Here you can keep living life to the full and if there's a time when you need more support, they are there for you.

Property Information

Council Tax Band: E

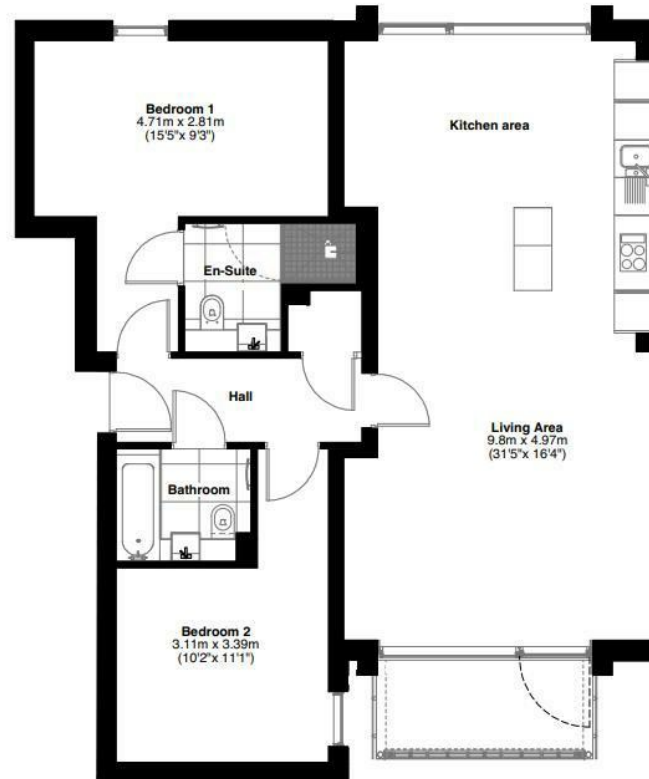
Leasehold

Mains Services

EPC Rating: B



Total area:
aprox. 94.30 sq. meters (1015.04 sq. feet)



Disclaimer These particulars, whilst believed to be accurate are set out as a general outline only for guidance and do not constitute any part of an offer or contract. Intending purchasers should not rely on them as statements of representation of fact, but must satisfy themselves by inspection or otherwise as to their accuracy. No person in this firms employment has the authority to make or give any representation or warranty in respect of the property. All measurements and distances are approximate only. Your home is at risk if you do not keep up repayments on a mortgage or other loan secured on it.