



📍 38 Shurnhold, Melksham, Wiltshire, SN12 8DG

🔗 Offers In Excess Of £300,000

Period Stone 3 Bedroom End Terrace Cottage has huge potential with far-reaching views to the front across open farmland, requiring some updating throughout

- Period Stone 3 Bedroom End Terrace Cottage
- Wonderful Far reaching Views To The Front
- Requiring Some Updating Throughout
- 3 Good Size Bedrooms
- Wealth of Character & Charm
- Ample Parking Plus Single Garage
- No Onward Chain

🏠 Freehold

🏠 EPC Rating G



Having been owned by the same family for many years we are delighted to bring to the market this Stone-built Period 3 Bedroom Cottage located on the edge of Melksham close to the villages of Shaw and Whitley with far-reaching views to the front across open countryside. The cottage will need some updating throughout but for those with a bit of vision wanting an individual home with both history and character, we feel this could be an ideal choice. The living accommodation comprises of a small entrance porch that leads into a large sitting room with a central feature fireplace having a dual fuel wood and coal burning stove fitted with stairs rising to the first floor along with a door to the kitchen along with the rear lobby. The kitchen is fitted with cupboard and base matching units and has a window overlooking the rear garden along with a door into the separate dining room. The dining room has windows to both the front and side. To the rear of the house is a storage room plus and downstairs shower room that could be altered subject to planning to something more like a larger utility room with a cloakroom. Moving upstairs are three good size double bedrooms and the family bathroom. Outside there is a single detached garage located to the side of the house with a block paved driveway along with ample parking laid to gravel with the rest laid to lawn. The rear garden is mainly laid to lawn with side access. The property is being brought to the market with No Onward Chain.

Situation

Shurnhold is set on the Bath side of Melksham, and offers the best of both worlds. A short level walk to the train station (lines to Trowbridge and Swindon) , and less than a mile into the town center with its ever expanding variety of shops and cafes. Bus routes to Bath, Chippenham and Devizes pick up a stones throw away and should you want some countryside walks, they are just across the road ! The villages of Shaw and Whitley are again less than a mile away and offer a popular primary school, golf and cricket club, and the acclaimed popular Pear Tree Inn. Melksham is an historic former market town with a variety of shopping including a Waitrose, leisure and educational facilities, well served by good roads and is only 12 miles south of the M4 motorway. Trains run from Melksham Station to Swindon, Southampton, Frome and Cheltenham. Buses serve Bath, Chippenham, Devizes and Trowbridge. National Express Coaches run direct services to London. The Georgian city of Bath offers a wealth of cultural and recreational points interests and is only 13 miles to the west and Salisbury, 34 miles to the south. Communications in the area are excellent with train services to London Paddington from Chippenham, Pewsey and Westbury. The M3 /4 also gives easy access to the motorway network and to Heathrow and Gatwick airports.

Property Information

E.P.C Rating: T.B.C

Council Tax Band: D

Mains Services

No Onward Chain



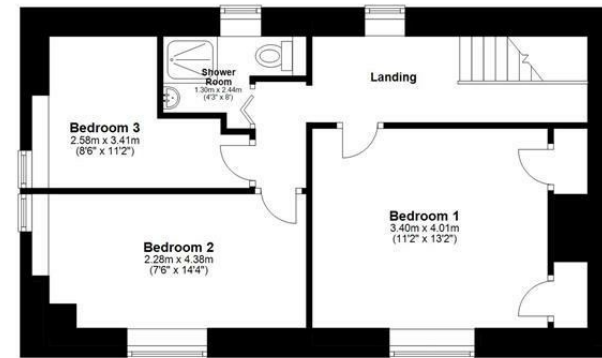
Ground Floor

Main area: approx. 59.3 sq. metres (637.8 sq. feet)
Plus garages, approx. 12.4 sq. metres (133.1 sq. feet)



First Floor

Approx. 47.7 sq. metres (513.3 sq. feet)



Main area: Approx. 106.9 sq. metres (1151.2 sq. feet)

Plus garages, approx. 12.4 sq. metres (133.1 sq. feet)

Disclaimer: These particulars, whilst believed to be accurate are set out as a general outline only for guidance and do not constitute any part of an offer or contract. Intending purchasers should not rely on them as statements of representation of fact, but must satisfy themselves by inspection or otherwise as to their accuracy. No person in this firm's employment has the authority to make or give any representation or warranty in respect of the property. All measurements and distances are approximate only. Your home is at risk if you do not keep up repayments on a mortgage or other loan secured on it.