



📍 2 Rowan Lane, Wadswick Green, Corsham, Wiltshire, SN13 9GN

🏷️ Asking Price £415,000

A luxury ground floor, two bedrooomed pre-owned retirement apartment operated by Rangeford Villages. Situated in a stunning courtyard surrounded by open countryside providing a generous 1008 sq ft of accommodation

- 2 Bedroom Ground Floor Luxury Retirement Apartment
- Luxury En-suite & Private Balcony
- Concierge & Transport Service
- Residents only Swimming Pool, Gym & Spa Facilities
- Award Winning Greenhouse Restaurant & Coffee Shop
- Rangeford Domiciliary Care

🏠 Leasehold

🏠 EPC Rating



A luxury ground floor, two bedroomed pre-owned retirement apartment operated by Rangeford Villages. Situated in a stunning courtyard surrounded by open countryside providing a generous 1008 sq ft of accommodation. This contemporary, leasehold property features a large open plan living space with floor to ceiling double aspect picture windows. Lounge area with an electric fireplace has access to the east facing balcony. The fully fitted kitchen also comes with integrated Bosch appliances including an electric oven, induction hob, microwave, dish washer and combined washing machine/tumble dryer. A special feature is the mobile island providing flexible and versatile working space with integrated wine rack. Two double bedrooms with fitted carpets. Master bedroom has a fully fitted wardrobe and en-suite with walk in shower, heated towel rail, mirror with integrated shaver point and feature lighting. The second double bedroom has views towards the open countryside. The main bathroom has a bath, basin and heated towel rail. The apartment benefits from thermostatically controlled by room underfloor heating throughout, 8ft 2in ceilings, dark hardwood flooring in the large living areas. Window dressings are also included. The dimensions shown on the floor plan are approximate and individual apartment dimensions will be confirmed upon reservation. Please note, apart from the kitchen fittings supplied the apartment is sold unfurnished. Other charges apply in addition to the purchase price: Annual Service Charges and Event Fee are payable in addition to the purchase price. Please ask the Wadswick Green sales Advisors for details. Rangeford Care are based within the village and provide outstanding domiciliary care plans to residents who require more support to manage their daily lives.



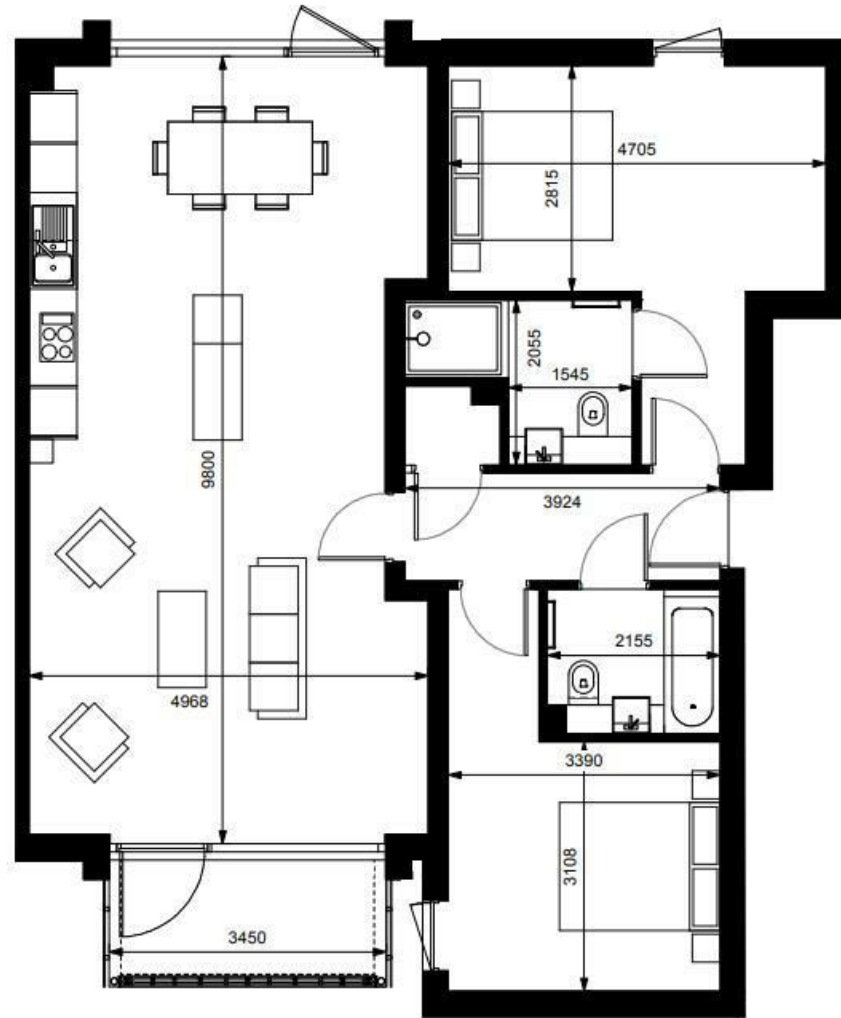
Situation

Set in the stunning Wiltshire countryside, in 25 acres of beautifully landscaped grounds, Wadswick Green is a place where you can enjoy the comfort and convenience of living in a contemporary new village for people over 60 years of age. Here you can continue to live life to the full and if there's a time when you need more support, help is at hand.

Property Information

Council Tax Band: E
Leasehold
Mains Services
EPC Rating: B





Disclaimer These particulars, whilst believed to be accurate are set out as a general outline only for guidance and do not constitute any part of an offer or contract. Intending purchasers should not rely on them as statements of representation of fact, but must satisfy themselves by inspection or otherwise as to their accuracy. No person in this firm's employment has the authority to make or give any representation or warranty in respect of the property. All measurements and distances are approximate only. Your home is at risk if you do not keep up repayments on a mortgage or other loan secured on it.