



📍 31 Rowan Lane, Wadswick Green, Corsham, Wiltshire, SN13 9GN

🏠 Asking Price £435,000

PRE-OWNED RETIREMENT APARTMENT
OPERATED BY RANGEFORD VILLAGES

- Luxury 2 Bedroom
- Retirement Apartment
- En-suite & Balcony
- Second Floor
- Stunning Courtyard Setting
- Swimming Pool & Spa Facilities
- Restaurant & Coffee Shop
- Rangeford Care Services available

🏠 Leasehold

🏠 EPC Rating B



A luxury second floor, two bedroomed pre-owned retirement apartment operated by Rangeford Villages. Situated in a stunning courtyard surrounded by open countryside providing a generous 1023 sq ft of accommodation. This contemporary, leasehold property features a large open plan living space with lounge area benefiting from bespoke built in units and dual aspect floor to ceiling picture windows. The fully fitted kitchen with additional storage cupboards, also includes integrated Bosch appliances of electric oven, induction hob, microwave oven, dish washer and combined washing machine/tumble dryer. A special feature is the mobile island providing flexible and versatile working space with integrated wine rack. Two double bedrooms, master bedroom has extensive fitted wardrobe providing ample hanging space and storage with an en-suite shower, basin with under cupboard, shaver point and feature lighting. Bedroom two offers bespoke fitted study/office furniture including bookshelves. Family bathroom, with shower, heated towel rail and extensive storage units. The apartment benefits from thermostatically controlled by room underfloor heating, with light oak hardwood flooring throughout. Window dressings of voiles, vertical blinds and curtains are also included. The dimensions shown on the floor plan are approximate and individual apartment dimensions will be confirmed upon reservation. Please note, apart from the kitchen fittings supplied the apartment is sold unfurnished. Other charges apply in addition to the purchase price: Annual Service Charges and Event Fee are payable in addition to the purchase price. Please ask the Wadswick Green sales Advisors for details. Rangeford Care are based within the village and provide outstanding domiciliary care plans to residents who require more support to manage their daily lives.

Situation

Set in the stunning Wiltshire countryside, in 25 acres of beautifully landscaped grounds, Wadswick Green is a place where you can enjoy the comfort and convenience of living in a contemporary new village for people over 60 years of age. Here you can continue to live life to the full and if there's a time when you need more support, help is at hand.

Property Information

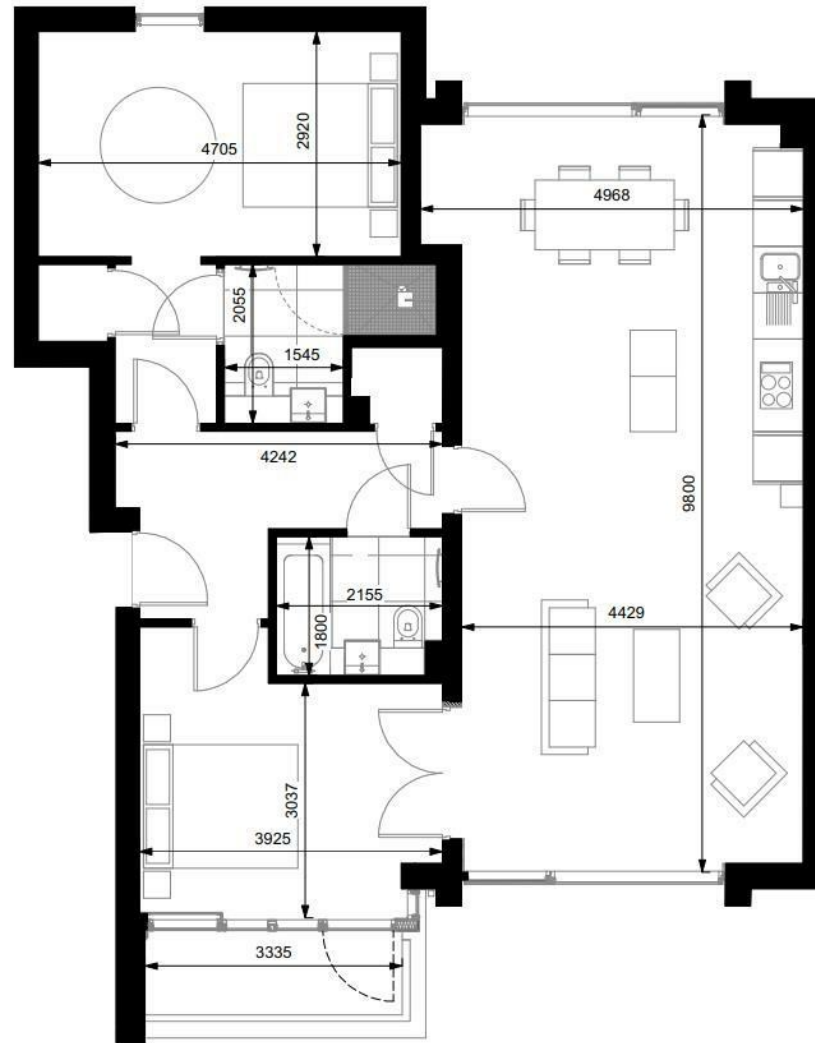
Council Tax Band: E

Leasehold

Mains Services

EPC Rating: B





Disclaimer These particulars, whilst believed to be accurate are set out as a general outline only for guidance and do not constitute any part of an offer or contract. Intending purchasers should not rely on them as statements of representation of fact, but must satisfy themselves by inspection or otherwise as to their accuracy. No person in this firm's employment has the authority to make or give any representation or warranty in respect of the property. All measurements and distances are approximate only. Your home is at risk if you do not keep up repayments on a mortgage or other loan secured on it.