



📍 39 Plantation Road, Chippenham, SN14 0EX

🏠 £318,500

A well-located, extended and tastefully presented three bedroom semi-detached home, situated in a popular residential area, with easy access to Chippenham town centre, railway station, and schools. Offered with No Onward Chain.

- Extended Three Bedroom Semi-Detached House
- No Onward Chain
- Spacious, Well-Presented Accommodation
- Large Sitting Room
- Modern Kitchen & Bathroom
- Generous Garden, Sheltered Seating Area
- Off-Road Driveway Parking
- Popular Residential Area
- Close to Town Centre & Railway Station

🏠 Freehold

🏠 EPC Rating D



A fantastic three bedroom semi-detached house, offering extended and well-presented living arrangements, superbly positioned within easy reach of Chippenham town centre, railway station and popular schooling. Offered with the benefit of No Onward Chain.

The internal accommodation is arranged over two levels, and briefly comprises; entrance area, large sitting room, opening into the dining area with sliding doors to the rear garden, modern kitchen, utility room, cloakroom, three bedrooms, and the family bathroom.

Externally the property offers a generous rear garden, split into patio paved and separate lawned areas. The patio area benefits from a sheltered seating area. To the front there is off-road driveway parking.

Situation

The property enjoys a convenient location for the town centre, local supermarkets and access to trunk roads, and other major commuter routes. Chippenham itself has a wide range of amenities to include High Street retailers, a leisure centre with indoor swimming pool, a library, a cinema and delightful public parks. There is also a mainline railway station (London - Paddington, 65 mins). Two of the towns reputable senior schools are close at hand, as is excellent primary schooling.

Property Information

Tenure: Freehold

Council Tax Band: B

Gas Central Heating

Mains Gas, Electricity, Water & Drainage

EPC Rating: D



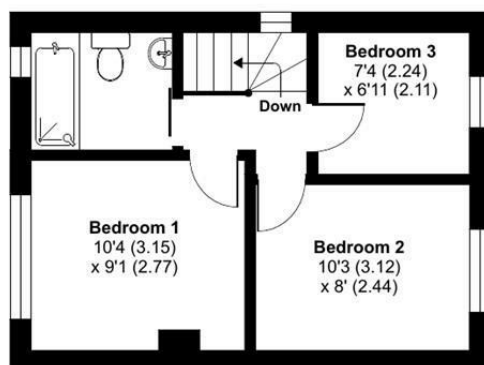
Plantation Road, Chippenham, SN14

Approximate Area = 1049 sq ft / 97.4 sq m

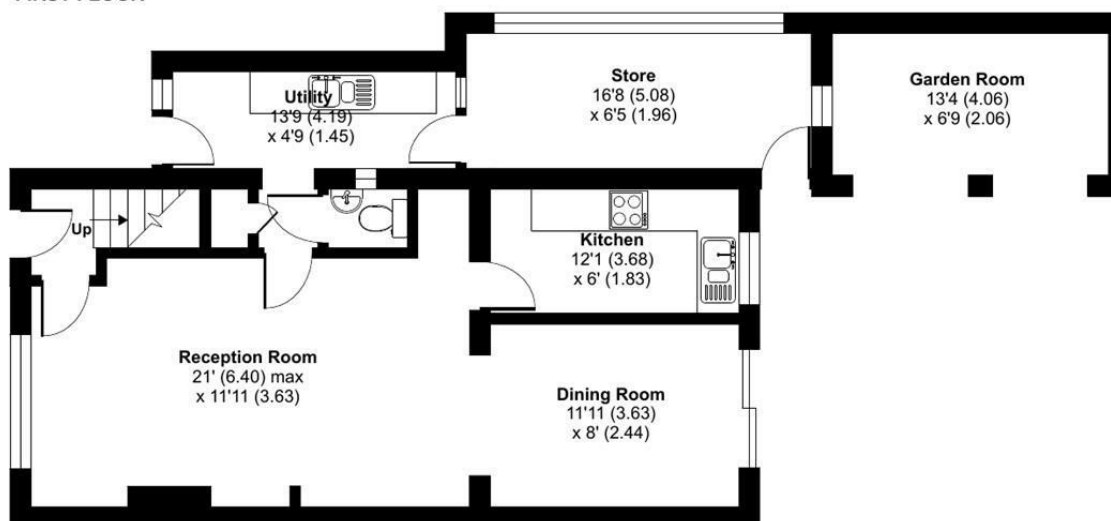
Outbuilding = 91 sq ft / 8.5 sq m

Total = 1140 sq ft / 105.9 sq m

For identification only - Not to scale



FIRST FLOOR



GROUND FLOOR



Floor plan produced in accordance with RICS Property Measurement 2nd Edition, Incorporating International Property Measurement Standards (IPMS2 Residential). © nitchecom 2025. Produced for Strakers. REF: 1355432

Disclaimer These particulars, whilst believed to be accurate are set out as a general outline only for guidance and do not constitute any part of an offer or contract. Intending purchasers should not rely on them as statements of representation of fact, but must satisfy themselves by inspection or otherwise as to their accuracy. No person in this firm's employment has the authority to make or give any representation or warranty in respect of the property. All measurements and distances are approximate only. Your home is at risk if you do not keep up repayments on a mortgage or other loan secured on it.