



📍 128 Ladyfield Road, Chippenham, Wiltshire, SN14 0AP

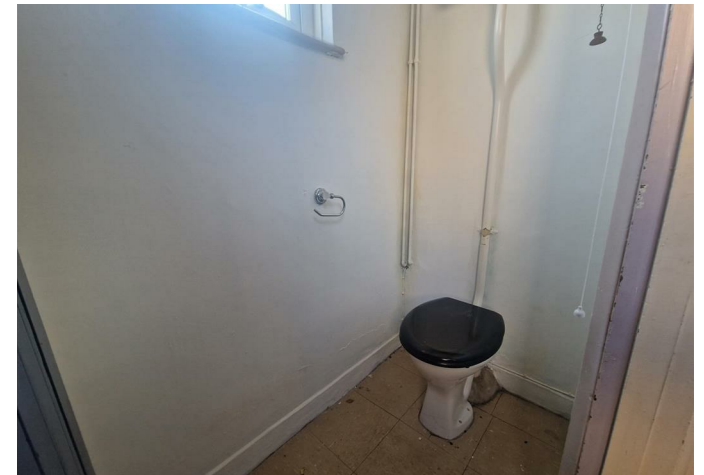
🏠 £205,000

A spacious two double bedroom semi-detached house, with off-road parking and sizeable garden, in need of modernisation throughout. Offered with No Onward Chain.

- Semi-Detached House
- Two Double Bedrooms
- In Need of Modernisation
- Off-Road Parking
- Good Sized Rear Garden
- Easy Acces to Town
- No Onward Chain

🏡 Freehold

🏠 EPC Rating C



A fantastic two bedroom semi-detached house, in need of modernisation, on the favoured west side of town. Ideal first time buy or investment. Offered with No Onward Chain.

The accommodation comprises on the ground floor; entrance hall, living room, kitchen and cloakroom. On the first floor, two double bedrooms and a family bathroom. The property has double glazing and gas central heating.

To the front there is driveway parking and lawned area. Side access leading to a good-sized enclosed rear garden laid mainly to lawn with useful hard standing. There is potential to extend to the rear (subject to consents).

Situation

The property is just a short distance away from the town and all amenities which include a public library, John Coles Park and the pleasant Monkton Park with a nine hole golf approach course and riverside walks and cycleways. There is convenient pedestrian access to the mainline railway station (London Paddington - approx. 75 minutes). The M4 motorway, the A4 and the A420 offer excellent motor commuting to the major centres of Bath, Bristol, Swindon & London. There is a good choice of private schooling in the locality and Chippenham also offers excellent secondary schools and primary schools, together with further education at Wiltshire College.

Property Information

Council Tax Band; B

Freehold

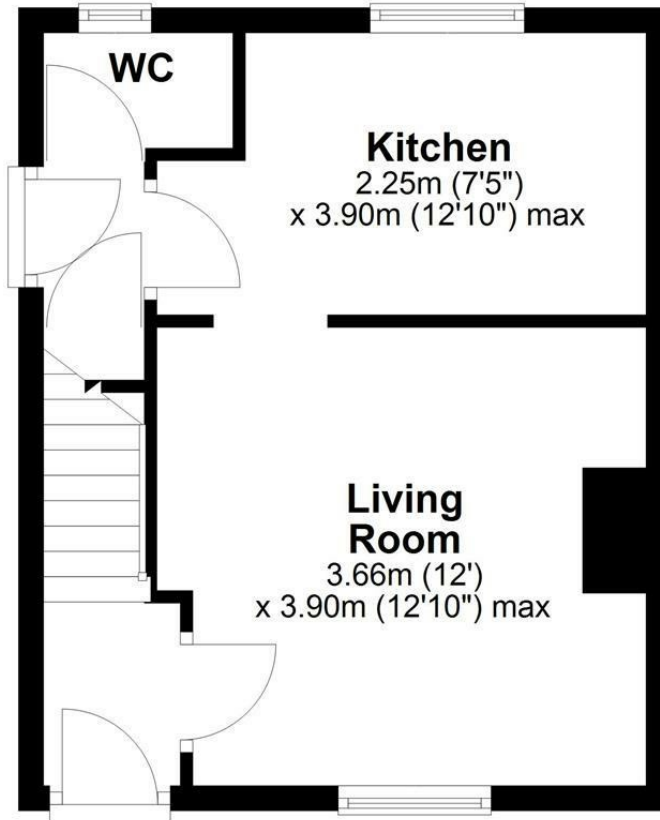
Mains Gas, Electricity, Water & Drainage

Gas Central Heating

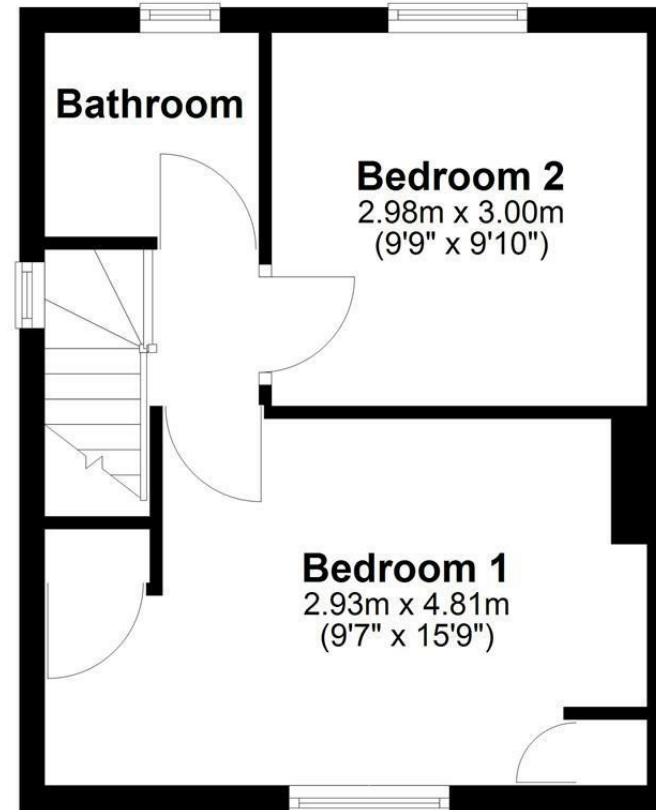
EPC Rating; C



Ground Floor



First Floor



Total area: approx. 57.7 sq. metres (621.4 sq. feet)

Disclaimer: These particulars, whilst believed to be accurate are set out as a general outline only for guidance and do not constitute any part of an offer or contract. Intending purchasers should not rely on them as statements of representation of fact, but must satisfy themselves by inspection or otherwise as to their accuracy. No person in this firm's employment has the authority to make or give any representation or warranty in respect of the property. All measurements and distances are approximate only. Your home is at risk if you do not keep up repayments on a mortgage or other loan secured on it.