



📍 The Studio Apartment, 2 The Causeway,
Chippenham, Wiltshire, SN15 3BT

🏠 Price Guide £120,000

A really lovely, one bedroom first floor period flat centrally located within the heart of Chippenham just off the High Street. Fantastically positioned within walking distance of the mainline train station, Monkton Park and the Olympiad Leisure Centre.

- Period Property
- First Floor Flat
- Very Well Presented
- Centrally Located
- One Bedroom
- Modern Shower Room
- Close to the Train Station
- Gas Central Heating & Double Glazing
- Share of Freehold
- Large Attic Space For Storage

🏠 Share of Freehold

🏠 EPC Rating D



OFFERED WITH NO ONWARD CHAIN-A really lovely, one bedroom first floor period flat centrally located within the heart of Chippenham just off the High Street. Fantastically positioned within walking distance of the mainline train station, Monkton Park and the Olympiad Leisure Centre.

Accommodation comprises; secure communal access to a private footpath, entrance hall shared by one other flat, entrance porch to the flat leading into an open plan living/kitchen area with integrated fridge freezer. Accessed off the living area is a double bedroom with a modern en-suite shower room.

The property benefits from having gas fired central heating, double glazed windows and an attic space that is boarded creating an excellent storage option. The property also has a share of the freehold.

Situation

The Causeway leads onto Market Place which is one of the oldest parts of the historic town of Chippenham. The town centre and the mainline railway station are also within a short walking distance. There is a good choice of private schooling and Chippenham also offers excellent secondary schools and primary schools, together with further education at Wiltshire College. The M4 motorway, the A4 and the A420 offer excellent motor commuting to the major centres of Bath, Bristol, Swindon & London.

Property Information

Council Tax Band; A

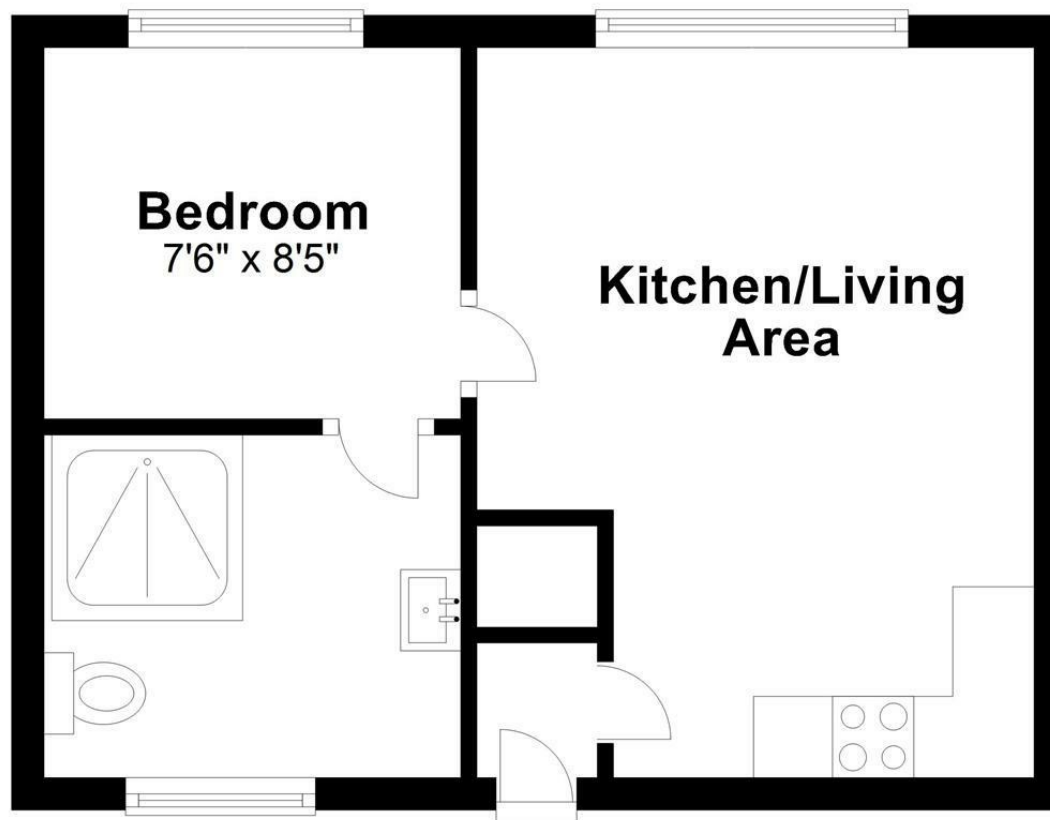
Leasehold & Share of Freehold

EPC Rating; D

Mains Services; Gas, Water, Electricity



Ground Floor



Total area: approx. 294.6 sq. feet

Disclaimer: These particulars, whilst believed to be accurate are set out as a general outline only for guidance and do not constitute any part of an offer or contract. Intending purchasers should not rely on them as statements of representation of fact, but must satisfy themselves by inspection or otherwise as to their accuracy. No person in this firm's employment has the authority to make or give any representation or warranty in respect of the property. All measurements and distances are approximate only. Your home is at risk if you do not keep up repayments on a mortgage or other loan secured on it.