



📍 Chiromawa, Old Road, Studley, Wiltshire, SN11 9NF

🏠 Price Guide £635,000

🏡 Freehold

📊 EPC Rating C





Old Road, Studley, Calne, SN11

Approximate Area = 2081 sq ft / 193.3 sq m

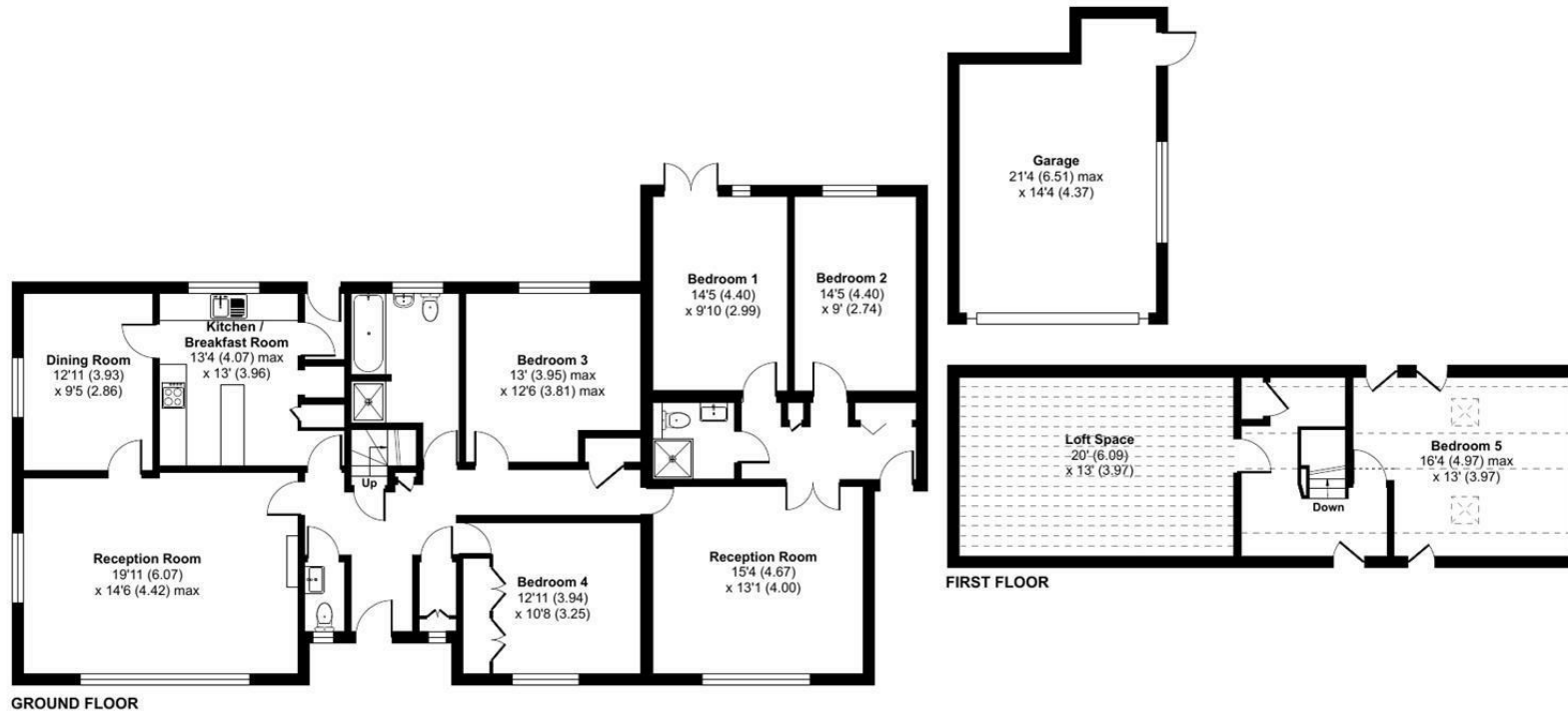
Limited Use Area(s) = 324 sq ft / 30.1 sq m

Garage = 277 sq ft / 25.7 sq m

Total = 2682 sq ft / 249.1 sq m

For identification only - Not to scale

Denotes restricted
head height



Floor plan produced in accordance with RICS Property Measurement 2nd Edition, Incorporating International Property Measurement Standards (IPMS2 Residential). © nitchecom 2025. Produced for Strakers. REF: 1265933

Disclaimer These particulars, whilst believed to be accurate are set out as a general outline only for guidance and do not constitute any part of an offer or contract. Intending purchasers should not rely on them as statements of representation of fact, but must satisfy themselves by inspection or otherwise as to their accuracy. No person in this firm's employment has the authority to make or give any representation or warranty in respect of the property. All measurements and distances are approximate only. Your home is at risk if you do not keep up repayments on a mortgage or other loan secured on it.