



📍 The Old Police House High Street, Sutton Benger, Wiltshire, SN15 4RQ

🏠 Price Guide £725,000

An attractive and beautifully presented, Grade II Listed, four bedroom, four reception room, two bathroom, period house with lovely, south facing gardens, double carport and ample driveway parking, which is situated in the heart of this sought after village.

- Attractive, Grade II Listed, Period House
- Four Good Sized Bedrooms
- Four Reception Rooms
- Two Bathrooms
- Beautifully Presented Throughout
- Numerous Period Features Including Mullion Windows, Fireplaces, Exposed Stone Walls & Beams
- Pretty, South Facing Gardens
- Double Oak-Framed Carport & Ample Driveway Parking
- Various Outbuildings
- Sought After Village Location

🏡 Freehold

🏠 EPC Rating



An attractive and beautifully presented, Grade II Listed, period house with lovely, south facing gardens, double carport and ample driveway parking, which is situated in the heart of this sought after village.

The property offers spacious and flexible accommodation over two floors comprising; entrance hall with cloakroom off (formerly a jail cell complete with bars to the window!), impressive sitting room with feature fireplace and inset wood burning stove, good sized dining room, sun room with bi-fold doors opening onto the rear garden, kitchen with AGA, breakfast room, utility room housing the oil fired central heating boiler, spacious principle bedroom with dressing area, built in 'Sharps' wardrobes and fabulous en suite bathroom with freestanding bath and separate shower cubicle, three further bedrooms and a bathroom with white suite.

Externally there is a part walled garden to the front with path leading to the front door and to the rear there a lovingly maintained, predominately lawned garden which is partly divided by a stone wall. Directly to the rear of the property there is a paved patio seating area which can be covered by an electric awning on a sunny day and there are further seating areas scattered around the pretty gardens. At the end of the garden there is a timber outbuilding which is divided into a studio and store. Two stone built garden stores.

There is driveway parking for numerous vehicles to the rear of the property (access via Chestnut Road) and additional parking spaces are provided by an impressive oak-framed carport which has power, lighting and loft storage.

Situation

Sutton Benger is a popular Wiltshire village which supports two popular public houses, a useful post office store, a highly regarded restaurant, well attended primary school and Hazelwood Beauty Salon. More comprehensive amenities can be found in nearby Chippenham including mainline railway station, highly regarded Secondary schooling, town centre leisure centre and shopping, as well as a range of other amenities. Close by is the popular town of Malmesbury which is reputed to be the oldest borough in the country dating back to the 11th Century. This thriving pretty town offers a wealth of buildings of architectural interest including its ancient Abbey, whilst also having a wide range of shops and amenities, a new Waitrose, award winning schools and leisure facilities. The M4 motorway at Junction 17 provides convenient motor commuting into the major centres of Bath, Bristol, Swindon and London.

Property Information

Council Tax Band ; F

Freehold

Mains Electricity, Water & Drainage

Oil Fired Central Heating

EPC Rating; Grade II Listed (Exempt)

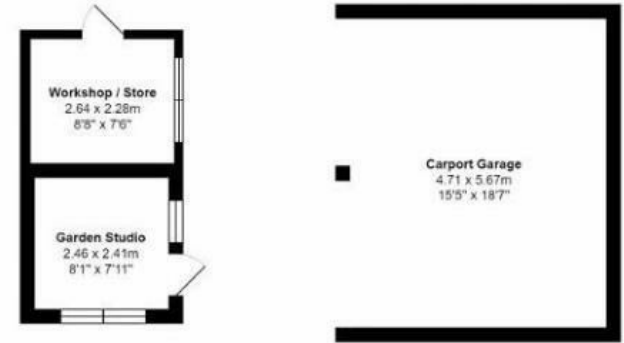




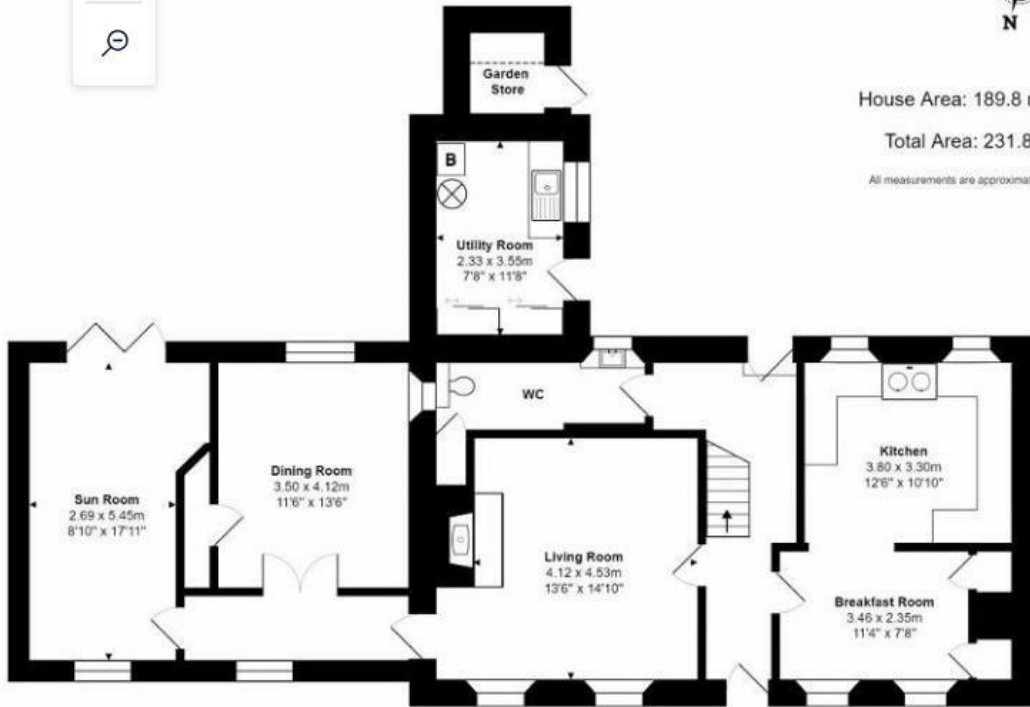
House Area: 189.8 m.sq ... 2043 sq.ft

Total Area: 231.8 m² ... 2496 ft²

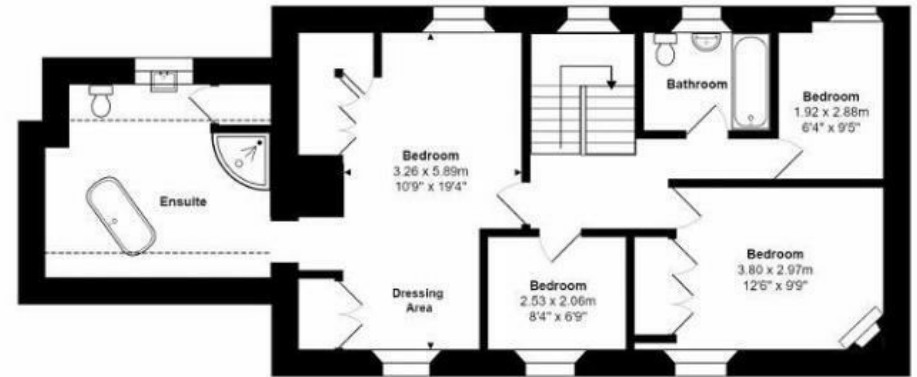
All measurements are approximate and for display purposes only



Outbuildings



Ground Floor



First Floor

Disclaimer These particulars, whilst believed to be accurate are set out as a general outline only for guidance and do not constitute any part of an offer or contract. Intending purchasers should not rely on them as statements of representation of fact, but must satisfy themselves by inspection or otherwise as to their accuracy. No person in this firm's employment has the authority to make or give any representation or warranty in respect of the property. All measurements and distances are approximate only. Your home is at risk if you do not keep up repayments on a mortgage or other loan secured on it.